

# LITTLE KING

WE MAKE FABRIC FABULOUS





# A G E N D A

01 Company Introduction

02 Future Strategy of LittleKing Global

03 Materials and Innovation

04 Q&A



# LITTLE KING GLOBAL

- Over 35 years in Functional Knitted Fabrics Industry
- Gross Output : Over 50,000,000 yards/year
- Specialize in Yarn, Knitting, Dyeing & Finishing Developments
- Open Innovation Center in 2015
- 2017 Annual Turnover 165 M USD

# CUSTOMER LIST



**patagonia**

G A P

# LITTLE KING GLOBAL



## Goal

Become a Leading Supplier with  
Outdoor and Sports Brands



## Growth

Attain Sustainable and  
Permanent Growth Since

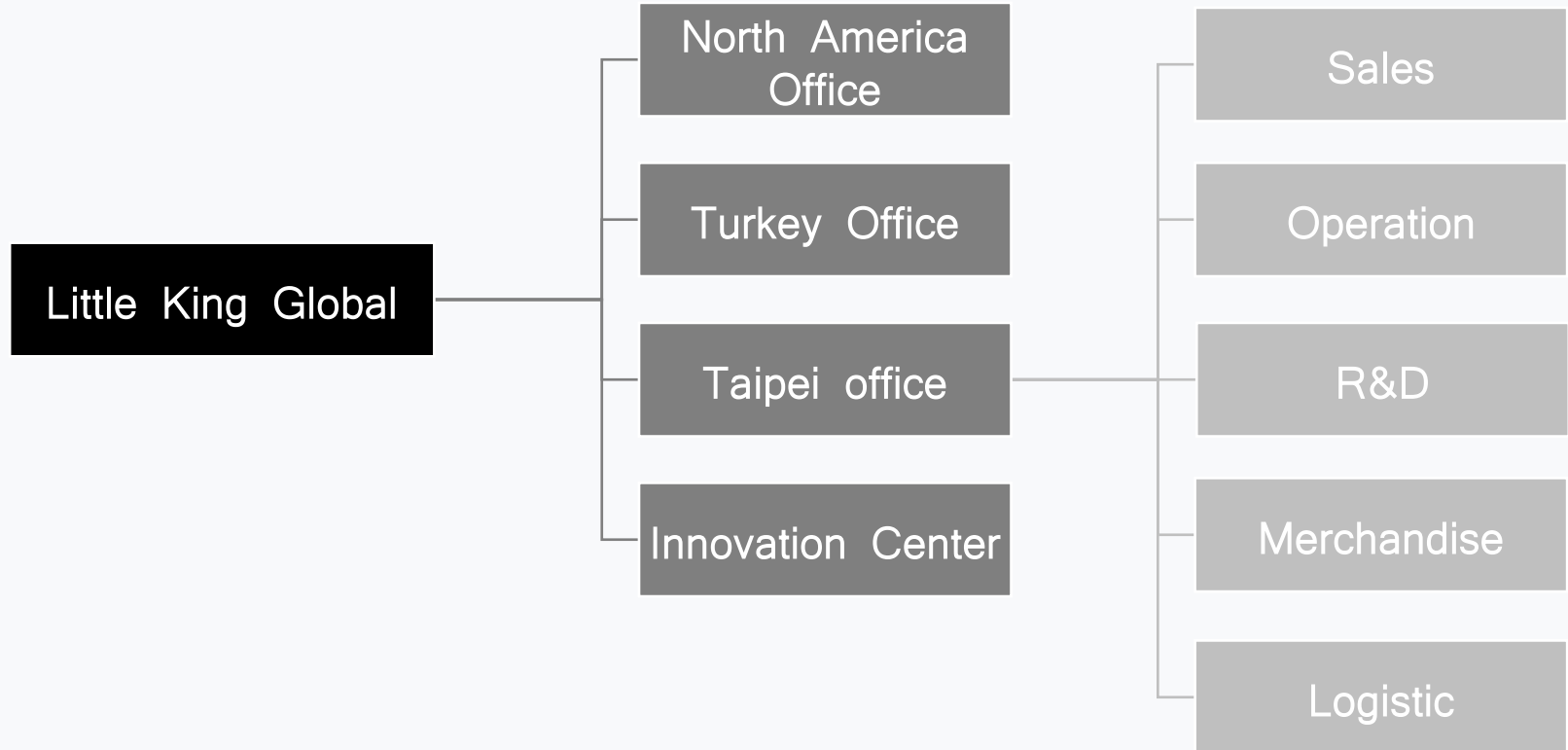
1982 - 2018



## Gold Award

2016/17 Innovation (Nike)  
2016/17 Mill of the year (Under Armour)

# LITTLE KING GLOBAL



## INNOVATION CENTER

Open innovation center

2015

## DIGITAL PRINT

Produced digital transfer paper In-house

2017

2016

2018-

## STRATEGIC ALLIANCE

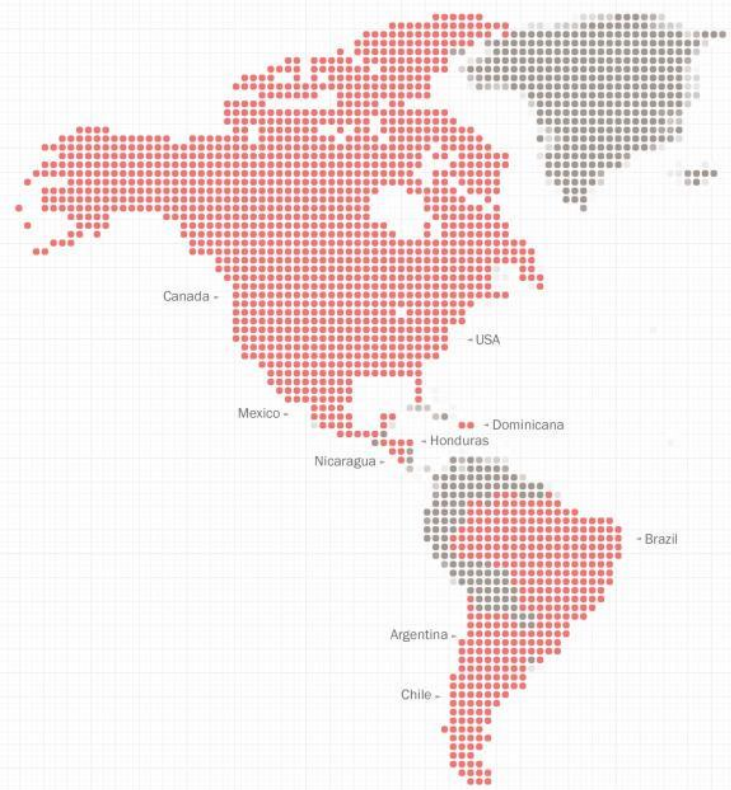
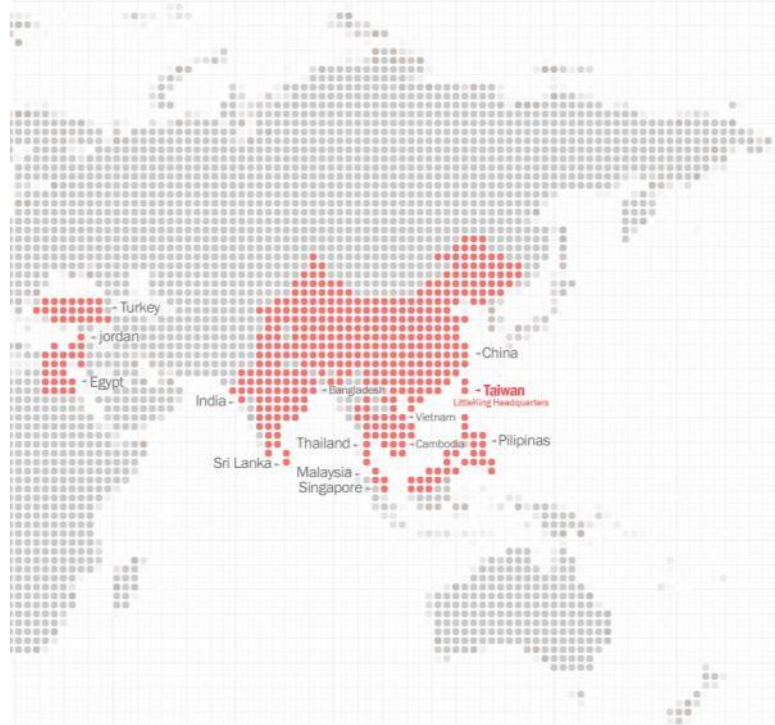
Partner with Garment Manufacturer  
Quang Viet(QVE)

## STRATEGIC ALLIANCE

Partner with Garment Manufacturer  
KING HAMM (Vietnam)

A photograph showing two hands, one from the left and one from the right, holding red mugs. The hands are positioned as if about to clink the mugs together. The background is a blurred outdoor scene with trees and a light sky.

# INVESTMENT STRATEGY



**A BUSINESS WITHOUT BOUNDARIES**

From Taiwan to the United States, from Southeast Asia all the way to Europe: we've exported our fabrics around the globe. We work closely with brands and garment factories to co-create innovative products that best meet customer demands and market trend.





We Make  
Fabric Fabulous!



- Ultralight
- High spandex
- Natural stretch
- UPF protection
- Wicking
- Anti-microbial
- Anti-Odor
- Water repellency
- Sublimation/Digital Print

A close-up photograph of a blue, textured fabric, likely a base layer, with several water droplets of varying sizes scattered across its surface. The droplets are clear and reflect light, highlighting the fabric's texture. The text 'BASE LAYER' is overlaid in white, sans-serif font in the upper right quadrant of the image.

BASE LAYER



# FLEECE

Variety of solutions for Mid-layer

- Classic fleece – Heather/Solid
- Sweater fleece
- 3D engineer pattern
- Bicolor fleece
- High-loft fleece
- Sherpa fleece

# KNIT FABRIC LAMINATION

- 2 Layer bonded
- 3 Layer lamination
- Soft-shell
- Wind-proof
- Water repellency
- Breathability



# ENGINEERED KNITS

- Single and Double knit jacquard
  - Textured Fleece
  - French terry jacquard
  - Engineered In-Lay
- 
- 2019 Women's World Cup Football Jersey
  - 2018 World Cup Football Jersey –  
USA/Brazil/Chile/Portugal/Nigeria



Innovation Power

# YARN INNOVATION

1. COTTON LIKE
2. MARBLE
3. POISE





# FUTURE WARMTH

## Non-Brushed

- Hybrid Sweater
- Breathable Warmth
- Optimize Comfort
- 3D Desired Terry



THANK YOU