

ASF GROUP
ACTION SPORTS FABRICS





NEVER STOP FABRIC INNOVATION AND INSPIRATION



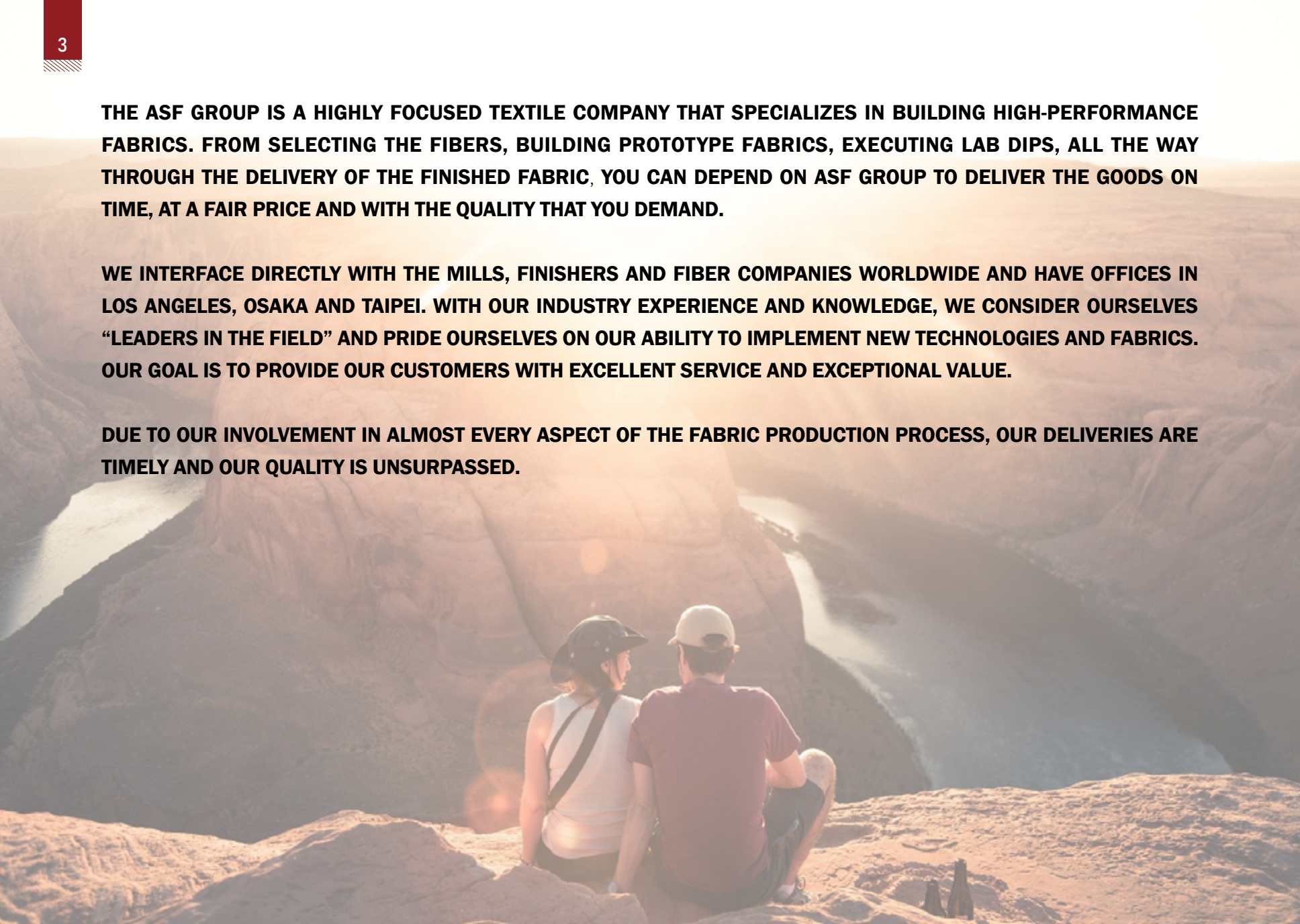
CONTENT

ABOUT US	03
FABRIC FEATURES	04
ECLIPSE™ TECHNICAL FINISHES	05
ECLIPSE™ SUSTAIN	09
ECLIPSE™ SCENT CONTROL	13
ECLIPSE™ COOL TOUCH	17
ECLIPSE™ HEATWAVE	19
ECLIPSE™ WOOL	20
ECLIPSE™ RAIN FLEECE	21
ECLIPSE™ WINDBRAKE	23
ECLIPSE™ DURAFACE	25
3D SPACER	27

THE ASF GROUP IS A HIGHLY FOCUSED TEXTILE COMPANY THAT SPECIALIZES IN BUILDING HIGH-PERFORMANCE FABRICS. FROM SELECTING THE FIBERS, BUILDING PROTOTYPE FABRICS, EXECUTING LAB DIPS, ALL THE WAY THROUGH THE DELIVERY OF THE FINISHED FABRIC, YOU CAN DEPEND ON ASF GROUP TO DELIVER THE GOODS ON TIME, AT A FAIR PRICE AND WITH THE QUALITY THAT YOU DEMAND.

WE INTERFACE DIRECTLY WITH THE MILLS, FINISHERS AND FIBER COMPANIES WORLDWIDE AND HAVE OFFICES IN LOS ANGELES, OSAKA AND TAIPEI. WITH OUR INDUSTRY EXPERIENCE AND KNOWLEDGE, WE CONSIDER OURSELVES “LEADERS IN THE FIELD” AND PRIDE OURSELVES ON OUR ABILITY TO IMPLEMENT NEW TECHNOLOGIES AND FABRICS. OUR GOAL IS TO PROVIDE OUR CUSTOMERS WITH EXCELLENT SERVICE AND EXCEPTIONAL VALUE.

DUE TO OUR INVOLVEMENT IN ALMOST EVERY ASPECT OF THE FABRIC PRODUCTION PROCESS, OUR DELIVERIES ARE TIMELY AND OUR QUALITY IS UNSURPASSED.





ASF FEATURES

The background features a collage of technical fabric finishes. On the left, there is a red fabric with a wavy, torn edge. Below it is a white fabric with a hexagonal mesh pattern. The central focus is a large, orange fabric with a woven diamond pattern, also featuring a wavy, torn edge. To the right of the orange fabric is a grey fabric with a fine, woven texture. The entire composition is set against a solid blue background.

ECLIPSE™ TECHNICAL FINISHES

EPX

EPX IS AN ADVANCED MICROPOROUS COATING THAT OFFERS BALANCED WATERPROOFNESS AND BREATHABILITY. EPX MICROPOROUS COATING ALLOWS MOISTURE VAPOR TO PASS DIRECTLY THROUGH THE FABRIC AT THE MAXIMUM LEVEL, WITHOUT COMPROMISING WATERPROOFNESS. FABRICS WITH EPX MICROPOROUS COATINGS PERFORM REMARKABLY UNDER MOST OUTDOOR WEATHER CONDITIONS.



ECLIPSE®



EPX
Microporous Coating

BALANCED PERFORMANCE

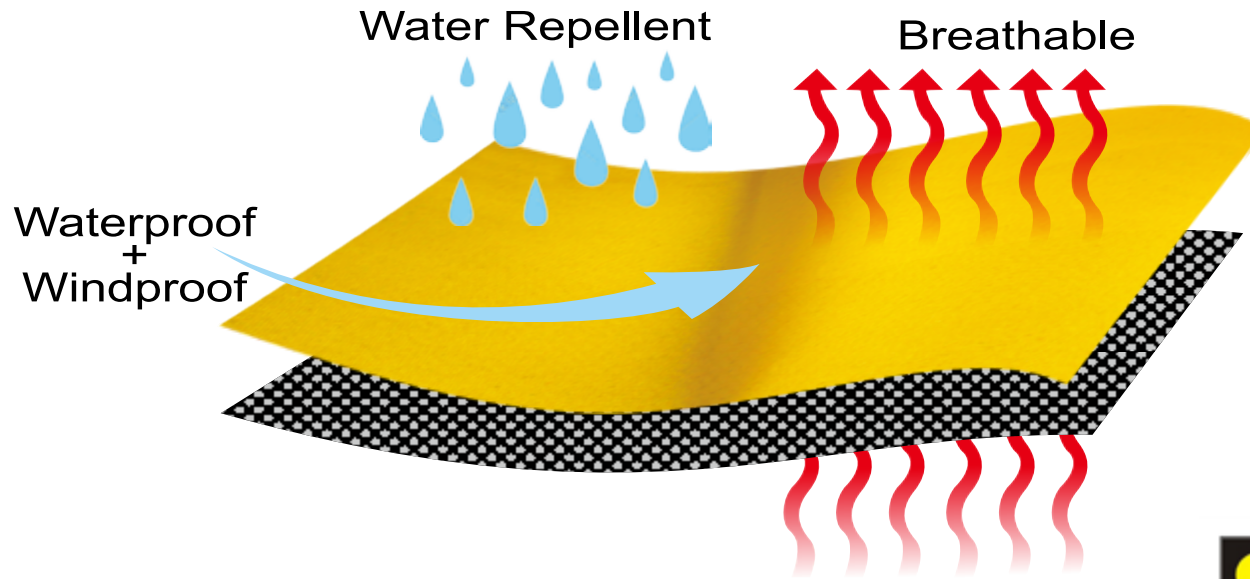
- EPX offers balanced breathability & waterproofness that keeps you dry.
- **Waterproofness:** 10,000mm.
- **Breathability:** 8,000-10,000g/m²/24hrs. (Based on the JIS L 1099 A-1 scale)
- Provides waterproofness without compromising on breathability.
- Performance in tough weather conditions.

CARE INSTRUCTIONS

 No Liquid Detergent	 No Chlorine Bleach	 Wash & Tumble Dry	 Use 100% Iron No Steam	 Do NOT Dry Clean
---	--	---	--	--

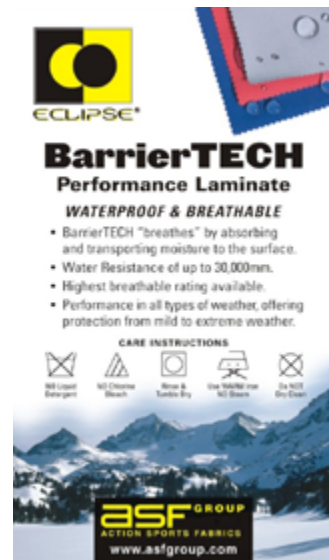


ASFGROUP
ACTION SPORTS FABRICS
www.asfgroup.com



BARRIER TECH

BARRIER TECH IS A HIGHLY FUNCTIONAL WATERPROOF AND BREATHABLE MEMBRANE FOR TECHNICAL OUTERWEAR. IT CAN BE APPLIED TO MOST QUALITY WOVEN OR KNITTED FACE FABRICS TO CREATE A SUPPLE OUTER LAYER TO MEET THE MOST DEMANDING PERFORMANCE REQUIREMENTS. THE HYDROPHILIC MEMBRANE “BREATHES” BY ABSORBING AND TRANSPORTING MOISTURE SLOWLY TO THE FABRIC SURFACE. ECLIPSE™ BARRIER TECH WATERPROOF BREATHABLE FABRICS PERFORM REMARKABLY AND PROVIDE GREAT PROTECTION IN ALL TYPES OF WEATHER.



TWIN SENSOR

TWIN SENSOR IS THE PINNACLE OF WATERPROOF BREATHABLE TECHNOLOGY. THIS INNOVATIVE MULTIFUNCTIONAL APPLICATION PASSES BOTH MOISTURE VAPOR AND MOISTURE CONDENSATION WHILE KEEPING EXTREMELY HIGH WATERPROOFNESS LEVELS BETWEEN 20,000MM TO 40,000MM; CREATING THE MOST FUNCTIONAL WATERPROOF BREATHABLE SYSTEM AVAILABLE. ASF HAS DEVELOPED THE MOST BALANCED, MOST EFFECTIVE AND MOST VERSATILE WATERPROOF SYSTEM AVAILABLE. WE HAVE TESTED THIS SYSTEM EXTENSIVELY IN THE LAB AND IN THE FIELD, AND IT HAS PROVEN TO BE THE BEST FABRIC FOR USE IN INCLEMENT WEATHER CONDITIONS.



ECLIPSE

Twin Sensor
Multi Functional Performance

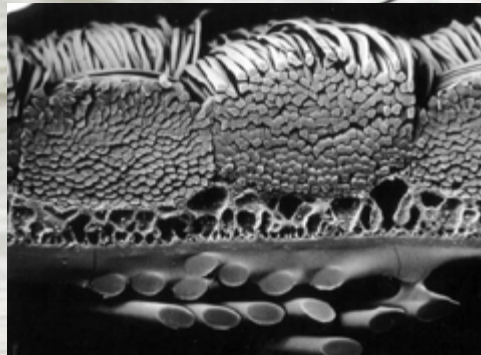
WATERPROOF & BREATHABLE

- Microporous multifunctional application transports both moisture and moisture vapor.
- Effective new waterproof/breathable technology is both efficient and versatile.
- Hydrophilic & Hydrophobic properties.
- The most effective waterproof/breathable technology for inclement weather conditions.

CARE INSTRUCTIONS

 No Liquid Detergent	 No Chlorine Bleach	 No Iron & Tumble Dry	 Dry Clean Only	 No Heat
---	--	--	--	---

ASF GROUP
ACTION SPORTS FABRICS
www.asfgroup.com



ECLIPSE™ SUSTAIN

AS A PART OF THE TEXTILE INDUSTRY SUPPLY CHAIN, IT IS OUR RESPONSIBILITY TO DEDICATE OURSELVES TO DEVELOP AND SELL FABRICS MADE FROM THE REUSABLE MATERIALS DISCARDED BY THE CONSUMER OR MANUFACTURING FACTORIES. RECYCLING IS OUR RESPONSIBILITY AS A COMPANY. WE PROCESS THE REUSABLE MATERIALS AND USE THEM TO PRODUCE NEW PRODUCTS. WITH THE COOPERATION OF OUR CUSTOMERS AND AFFILIATED COMPANIES, WE ARE IMPLEMENTING AN EFFICIENT SYSTEM THAT MINIMIZES WASTE DURING THE PRODUCTION PROCESS. WE ARE DOING SMALL THINGS, BUT FROM SMALL THINGS BIG THINGS GROW.



01



RECYCLED
PET
BOTTLES

02



FLAKE

03



PELLETS

04



FIBER

06



GARMENTS

05



FABRIC

RECYCLED PROCESS

BIO-BASED & RECYCLED MEMBRANE

PETROLEUM-BASED MATERIALS HAVE A HUGE IMPACT ON OUR ENVIRONMENT. IT IS OUR GOAL TO REDUCE THE AMOUNT OF PETROLEUM-BASED MATERIALS IN OUR FABRIC PRODUCTION. BESIDES PRODUCING SUSTAINABLE FABRICS, MORE ENVIRONMENTAL-FRIENDLY FINISHING OPTIONS ARE ALSO A PRIORITY. BY USING BIO-BASED MEMBRANES AND RECYCLED MEMBRANES, WE MAKE THE ENTIRE FABRIC LESS IMPACTFUL TO OUR ENVIRONMENT.

BIO-BASED POLYESTER PU MEMBRANE

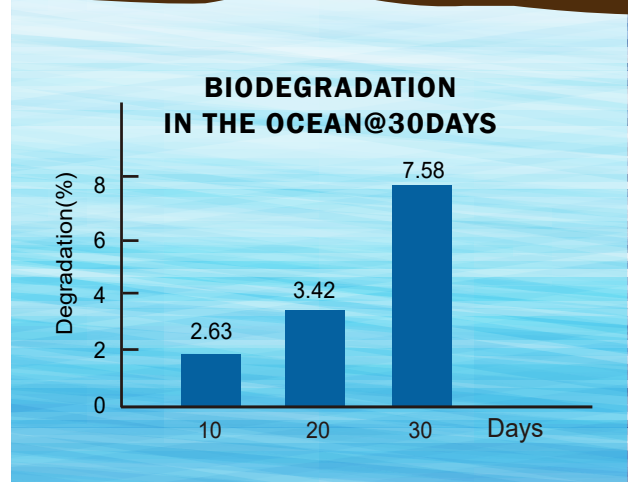
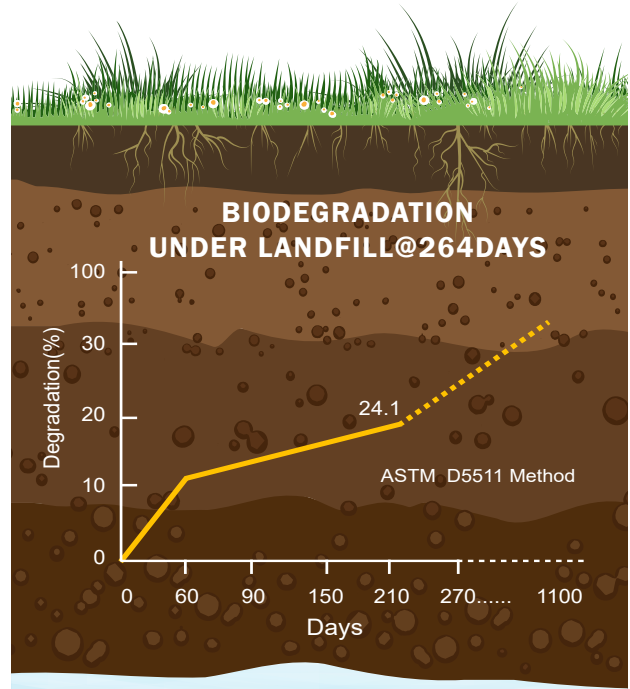
- **W/P: 15K/15K AVERAGE PERFORMANCE**
- **33% BIO-BASED ECO RESOURCES FROM DUPONT CERENOL; REDUCES PETROLEUM USAGE**
- **THE MAIN MATERIAL OF THE ECO RESOURCES IS EXTRACTED FROM CORN**
- **SOLVENT FREE**

SUSTAIN™ TPE MEMBRANE

- **RECYCLED POLYESTER MEMBRANE: 75% RECYCLED POLYESTER TPE MEMBRANE FROM OFF-CUT**
- **BIO-BASED NYLON MEMBRANE: 48% BIO-BASED ECO RESOURCES EXTRACTED FROM CASTOR OIL. CASTOR OIL-BASED MATERIALS SAVE MORE ENERGY AND REDUCE CARBON DIOXIDE EMISSIONS**
- **SOLVENT FREE**

RECYCLED BIODEGRADABLE POLYESTER FABRIC

PEOPLE DUMP AN AVERAGE OF 12,000KT GARMENTS PER YEAR IN LANDFILLS, HOWEVER, THE COMPLETE DEGRADATION TAKES AT LEAST 450 YEARS WHICH HAS CAUSED TREMENDOUS IMPACT TO OUR ENVIRONMENT. ASF IS WORKING CLOSELY WITH MAJOR YARN SUPPLIERS TO DEVELOP FABRICS USING RECYCLED BIODEGRADABLE POLYESTER YARN. ADDING ORGANIC ADDITIVES INTO THE RECYCLED POLYESTER YARN, ATTRACTS MICROBES TO BREAK DOWN FIBERS, WHICH ACCELERATE THE BIODEGRADATION PROCESS.



ECLIPSE™ SCENT CONTROL

ECLIPSE™ SCENT CONTROL TECHNOLOGY DESTROYS ODOR-CAUSING BACTERIA BEFORE THE BACTERIA CREATES BODY ODOR. IN ADDITION, THIS TECHNOLOGY ALSO CAPTURES AND ELIMINATES ORGANIC ODORS THROUGH ODOR ADSORPTION.



ANTI-MICROBIAL

CAPTURE
+
CONTROL

SCENT CONTROL

ELIMINATE
ODORS

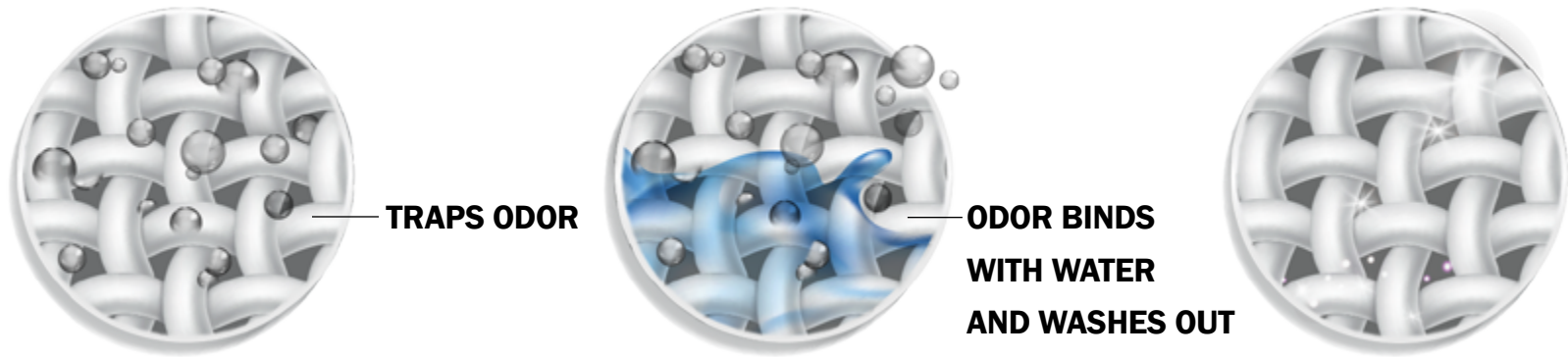
ANTI-MICROBIAL

ODOR CAUSING BACTERIA BUILDS UP ON FABRIC AND CREATES A NOTICEABLE STENCH THAT DOESN'T GO AWAY, EVEN AFTER LAUNDERING. ECLIPSE™ SCENT CONTROL ANTI-MICROBIAL TREATMENT IS HIGHLY EFFECTIVE AGAINST ODOR GENERATING BACTERIA. WHEN BACTERIA IS TRANSFERRED TO THE TREATED FIBERS, THE ANTIMICROBIAL TREATMENT INFILTRATES AND BREAKS DOWN THE BACTERIA'S CELL MEMBRANE, SEVERELY HINDERING ITS ABILITY TO GROW. WITHOUT A HEALTHY MEMBRANE, MICROBES DIE AND CAN NO LONGER CREATE ODOR OR STAINS.

- INCORPORATED INTO TEXTILES OF ALL FIBER TYPES
- EASY TESTING METHOD
- GLOBALLY CERTIFIED WITH EPA & BLUE SIGN
- OFFERS LONG LASTING ODOR CONTROL AND FABRIC PROTECTION
- DURABLE TO LAUNDERING
- SUITABLE FOR MOST COMMON TEXTILE PROCESSES
- COMPATIBLE WITH MOST MOISTURE MANAGEMENT & WATER REPELLENT CHEMISTRIES



ECLIPSE™ SCENT CONTROL



PERMASTINK IS A BAD ODOR THAT PERMANENTLY PENETRATES INTO THE FIBERS OF YOUR CLOTHING. THE MAIN CAUSES OF THIS BAD ODOR IN TEXTILES ARE ORGANIC CARBOXYLIC ACIDS, WHICH EMBED IN FABRICS CAUSING PERSISTENT OR PERMANENT ODOR.

ECLIPSE™ SCENT CONTROL TECHNOLOGY PROVIDES A PROTECTIVE BARRIER ON FABRICS THAT TRAPS BODY ODOR, PREVENTING APPAREL FROM GIVING OFF AN OFFENSIVE SMELL DURING WEAR AND BETWEEN WASHINGS. DURING LAUNDERING, THE PATENT-PENDING TECHNOLOGY RELEASES TRAPPED ODORS, ALLOWING THEM TO BE RINSED CLEAR OF THE FABRIC.

ECLIPSE™ XEOLITE SCENT CONTROL

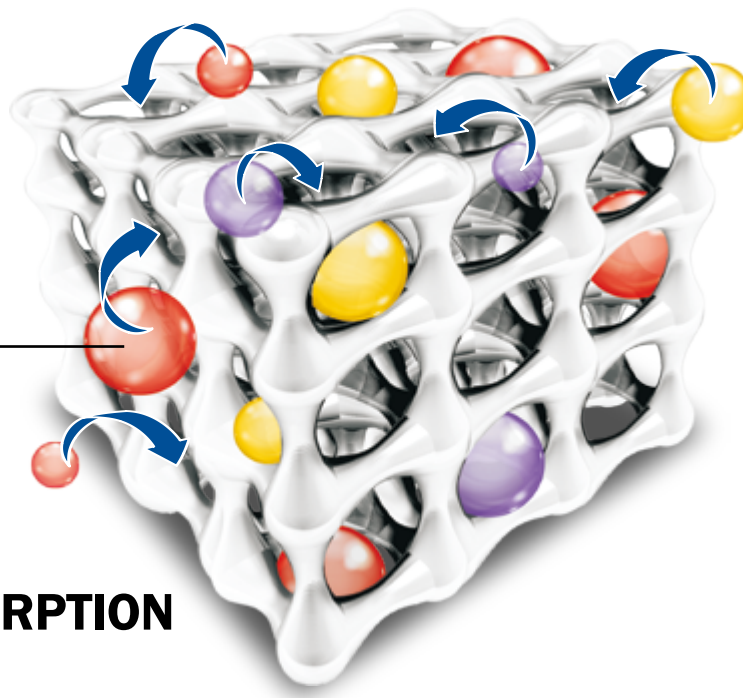
EXISTING ODORS ARE CAPTURED BY ZEOLITE FROM NATURAL VOLCANIC ROCK. ZEOLITE FORMS A MICROPOROUS SIEVE THAT ATTRACTS, ADSORBS AND CAPTURES ODORS.

ECLIPSE™ XEOLITE SCENT CONTROL TECHNOLOGY ACHIEVES AN EXCELLENT DEODORIZING EFFECT, ESPECIALLY ON AMMONIA, SWEAT AND OTHER ORGANIC MATTER THAT CAUSE ODOR.

- LONG-TERM AND EFFICIENT ODOR CONTROL
- SOFT AND PLIABLE APPLICATION
- REACTIVATES THROUGH HOME LAUNDERING

VAPOR BASED
ODOR MOLECULES

ODOR ADSORPTION



ECLIPSE™ COOL TOUCH

TREATMENT

ECLIPSE™ COOL TOUCH IS A SYSTEM THAT DRAWS MOISTURE AWAY FROM THE BODY WITH COOLING EVAPORATION TECHNOLOGY. THE ENDOTHERMIC REACTION ABSORBS SWEAT AND IS QUICKLY CONVERTED TO COOLING ENERGY.

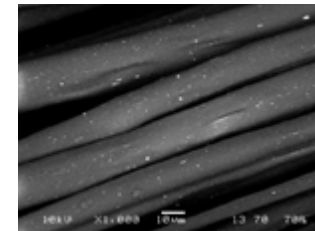
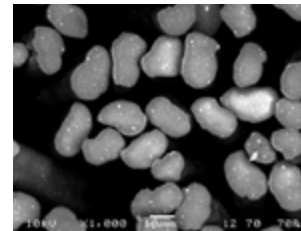
ECLIPSE™ COOL TOUCH PULLS EXCESS HEAT FROM THE BODY WITH MOISTURE MANAGING PROPERTIES THAT ASSIST IN LOWERING THE SKIN TEMPERATURE.

- LOWER SKIN SURFACE TEMPERATURE ON AVERAGE
1°C TO 1.5°C (2~3 °F)
- APPLY BY IST PRINT OR PADDING
- EFFECTIVE FOR 20X HOME LAUNDERING

YARN

ECLIPSE™ COOL TOUCH YARN FABRIC CONTAINS COOLING MATERIALS THAT HELPS REGULATE SKIN SURFACE TEMPERATURE. THIS TECHNOLOGY ALLOWS FOR SUPERIOR MOISTURE MANAGEMENT TO ENHANCE HEAT VENTILATION AND INCREASE THE COMFORT LEVEL, WHICH GIVES THE WEARER AN INSTANT COOLING SENSATION.

- DURABLE COOLING & PERMANENT WASHING
- QMAX VALUE ≥ 0.13 W/CM2





ECLIPSE™ HEATWAVE

ECLIPSE™ HEATWAVE IS DESIGNED TO ADD VALUE TO YOUR GARMENTS AND ACCESSORIES. OUR SOPHISTICATED INNER SURFACE TECHNOLOGY USES ADVANCED CERAMICS AND MINERAL POWDER TO RETAIN AND GENERATE HEAT, ADDING TO THE COMFORT OF THE WEARER IN COLDER TEMPERATURES.

THE APPLIED INNER SURFACE TECHNOLOGY CONDUCTS, RETAINS AND STORES HEAT FROM THE SUN, AND THE WEARER'S INFRARED BODY HEAT TO STABILIZE BODY TEMPERATURE.

ECLIPSE™ HEATWAVE IS APPLIED AS A PRINT ON THE INNER SURFACE OF OUR FABRICS. CUSTOM DESIGNS ARE AVAILABLE AS WELL AS OUR STANDARD DESIGNS.



ECLIPSE™ MERINO WOOL FABRICS COMBINE FUNCTIONS OF WICKING AND ODOR CONTROL PERFORMANCE, KEEPS THE WEARER DRY, COOL, FRESH AND COMFORTABLE.

- **BIODEGRADABLE**
- **STATIC RESISTANT**
- **ODOR RESISTANT**
- **BREATHABLE AND COMFORTABLE**
- **REGULATES BODY TEMPERATURE**

ECLIPSE™ WOOL

ECLIPSE™ RAIN FLEECE



ECLIPSE™ RAIN FLEECE IS A STURDILY CONSTRUCTED DOUBLE-KNIT FLEECE WITH EXCELLENT WATER REPELLENCY PERFORMANCE. PROVIDING THE WARMTH OF A MID LAYER FLEECE AND REPELLS WATER LIKE AN OUTER LAYER, THIS FABRIC PROVIDES A GREAT OPTION FOR HOODIES AND FLEECE JACKETS FOR ALL OUTDOOR ACTIVITIES.

- **SUPERIOR WATER REPELLENCY**
- **SUPERIOR PILLING AND SNAGGING RESISTANCE**
- **WARM AND DRY**
- **BLENDS PERFORMANCE AND COMFORT**



ECLIPSE™ WINDBRAKE

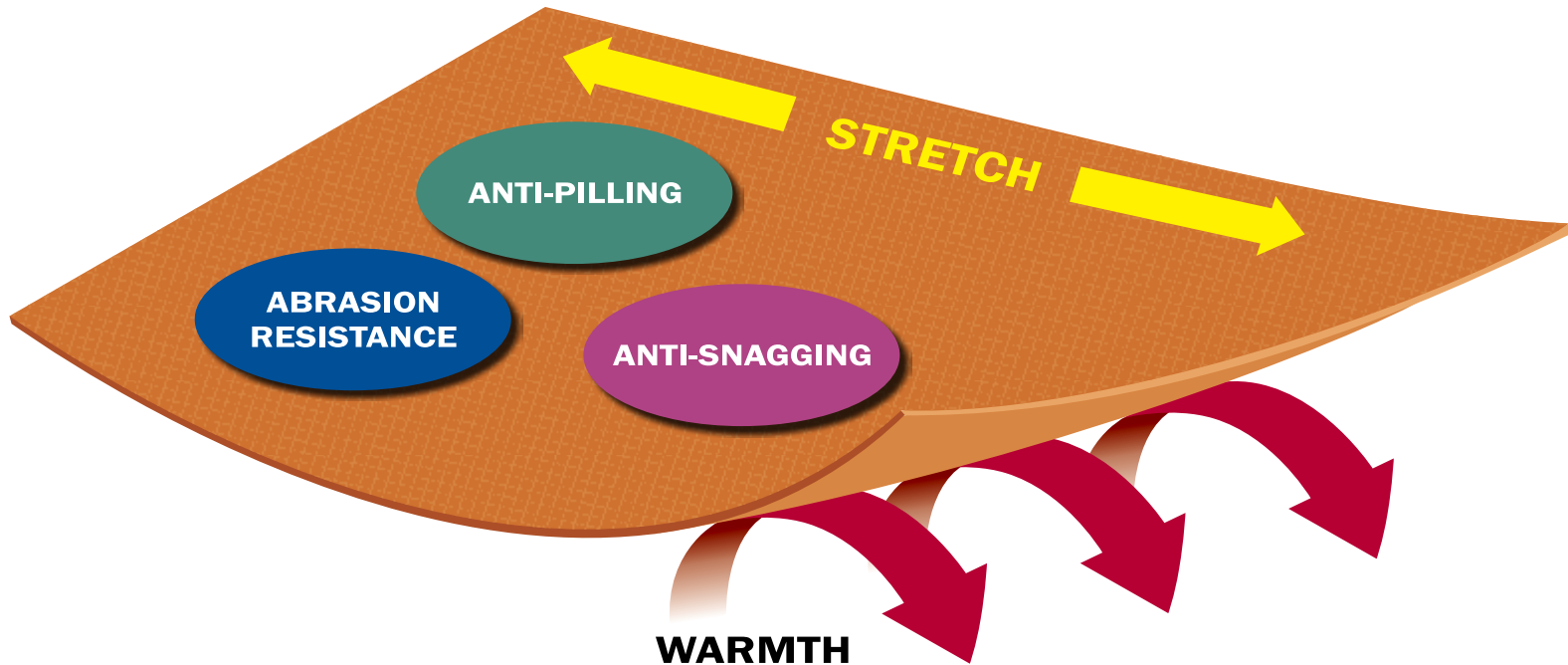
ECLIPSE™ WINDBRAKE FABRIC IS ENGINEERED WITH DURABLE WATER REPELLENCY THAT WITHSTANDS MOISTURE AND RAIN WHILE RETAINING BREATHABILITY AND COMFORT. THE TECHNOLOGY ALSO ALLOWS MODERATE VENTILATION THROUGH THE FABRIC LAYERS WHICH HELPS TO MITIGATE HEAT STRESS AND EXTENDS WEAR TIME.



- **MOISTURE RESISTANCE**
- **AIR PERMEABILITY**
- **THERMAL CONTROL**
- **EXCELLENT BREATHABILITY**

ECLIPSE™ DURAFACE

- SOFT AND QUIET
- GREAT ELASTICITY
- EXCELLENT ABRASION RESISTANCE



ECLIPSE™ DURAFACE WOVEN AND KNIT FABRICS ARE CREATED TO ACHIEVE A ONE LAYER “SOFTSHELL TYPE” FABRIC TO AVOID DRAWBACKS OF BONDED AND/OR LAMINATED FABRICS. OUR DURAFACE FABRICS ARE TIGHTLY WOVEN OR KNITTED WITH LOOP PILES FOR A FLEECE-LIKE APPEARANCE; PROVIDING THE WEARER WITH WARMTH WITHOUT THE TYPICAL NOISE CAUSED BY THE FRICTION OF LAMINATED OUTERWEAR.



ECLIPSE™ 3D SPACER FABRICS COMBINE FABRIC LAYERING AND QUILTING TO CREATE A STRIKING THREE-DIMENSIONAL VISUAL APPEARANCE, WHILE OFFERING THE WEARER COMFORT AND WARMTH WITHOUT COMPROMISING DURABILITY.



- BREATHABLE
- THERMAL CONTROL
- SOFT AND COMFORTABLE

ASF GROUP
ACTION SPORTS FABRICS



**U.S. Office / Clark Textile Company, Inc.
624 South Grand Avenue San Pedro, Ca 90731
Tel 310-831-2334 Fax 310-831-2335**

**Taiwan Branch / Clark Textile Company, Inc.
8 Fl., No. 64 Kang Ding Rd. Taipei, Taiwan 108
Tel (02) 2361-1566 Fax (02) 2388-1357**

**Japan Office / Kyodo International Corp.
Yamaguchi-Kosan Bldg. 2F 3-8, 3-Chome,
Honmachi, Chuo-Ku, Osaka 541-0053, Japan
Tel 06-6281-2800 Fax 06-6281-2808**



**FROM FIBERS, TO FABRICS, TO FINISHING...
WE ARE THE FABRIC BUILDERS!**

www.asfgroup.com