

**MOUNTAINKISS**

## 2003

Started production of outdoor clothing for European brands



# MOUNTAINKISS

2012

MK started and product moved to higher level range, produce for Castelli, Dainese, Alpine Pro, office in Wanda Center



# MOUNTAINKISS

2013–2014

MK got 4 Million US\$ turnover, started cooperation with Japanese and Australian customers.



2015-2016

MK start Eco-friendly production, keep 30% increasement every year.working with French designer Mr.Laurent.



# MOUNTAINKISS

2017-2018

MK Set up new BSCI factory professional for woven Seamtaped garments, started from 200 workers and plan grow to 500 workers in 3 years. the factory facility is to produce highest waterproof shell and ski garments, our team has experiences to produce Arc'teryx, The North Face, Kjus, Bergans and Norrona. we have 5S managment system, Clean workshop, nice food and conditions for the workers. our final target is to get Gore-Tex licenced.



# MOUNTAINKISS

2017-2018

MK Cooperated with Italian design team, we upgrade our service from OEM to ODM, we use more Re-Cycle material to protect environment, we choose Oeko-Tex 100 and Blue-Sign certified suppliers. we start produce PFC-Free Waterproof shell clothing.



# MOUNTAINKISS

2019

In 2019, MK have 10 Million US\$ business, we upgrade the company from MK Apparel to MK International. at the same time, MK will move to new office in June.

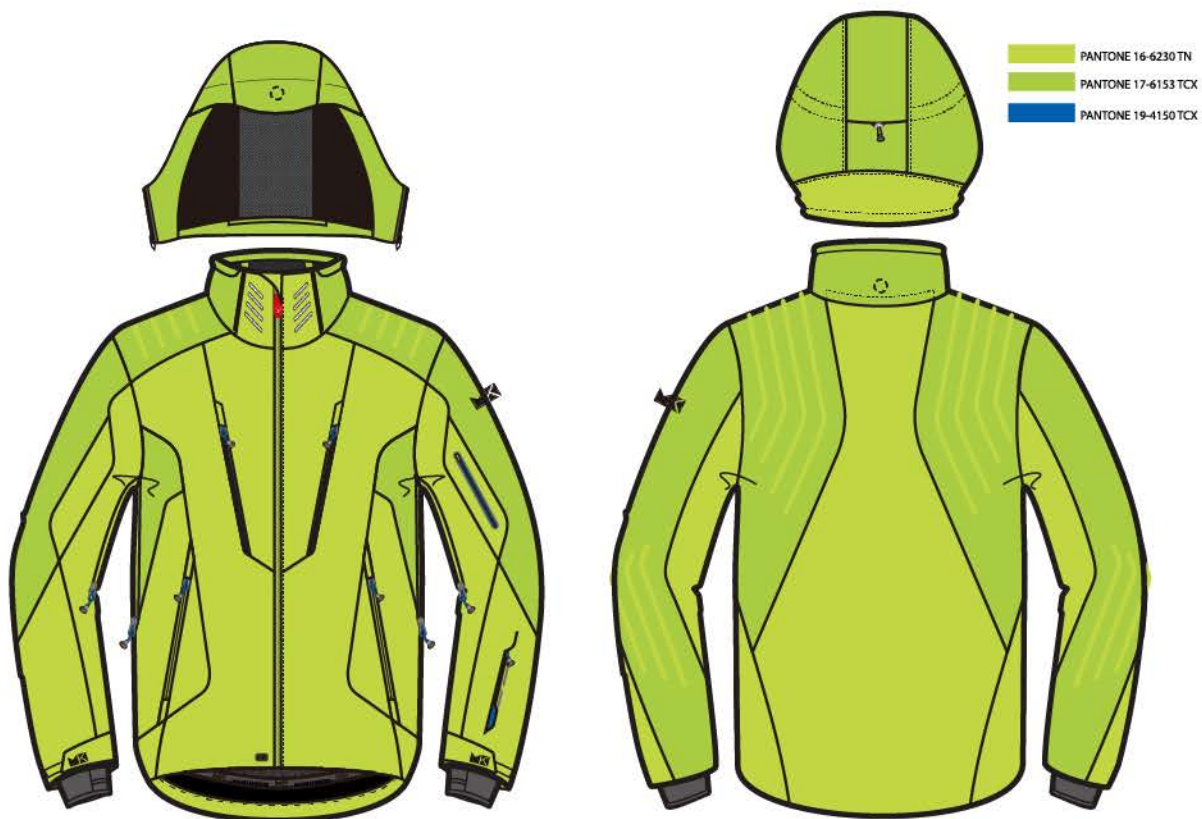
2019年1月，公司更名为MK International，并于6月迁至新办公室。





## New Designs

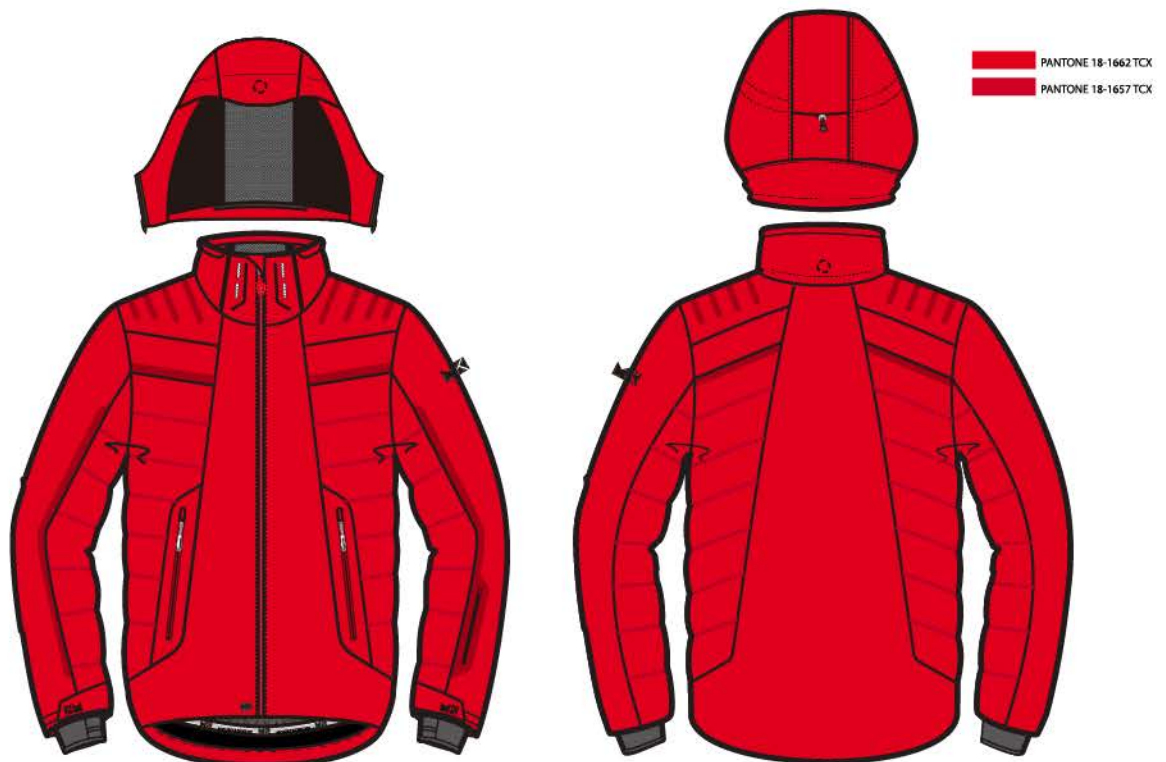
Professional Ski Man 201



# MOUNTAINKISS

## New Designs

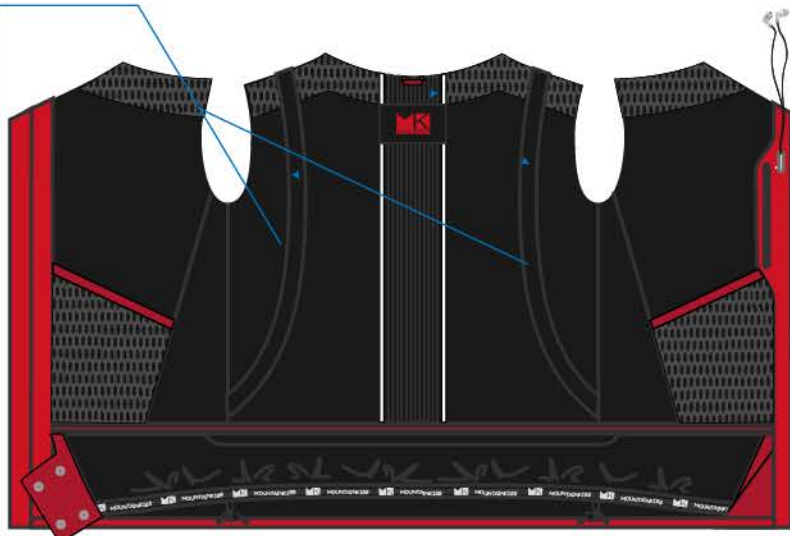
Professional Ski Man 205



# MOUNTAINKISS

## New Designs

### Professional Ski Man 208



# MOUNTAINKISS

## New Designs

Professional Ski Woman 301



# MOUNTAINKISS

## New Designs

Professional Ski Woman 303

WHITE  
PANTONE 17-4247 TCX



PANTONE 17-4247 TCX



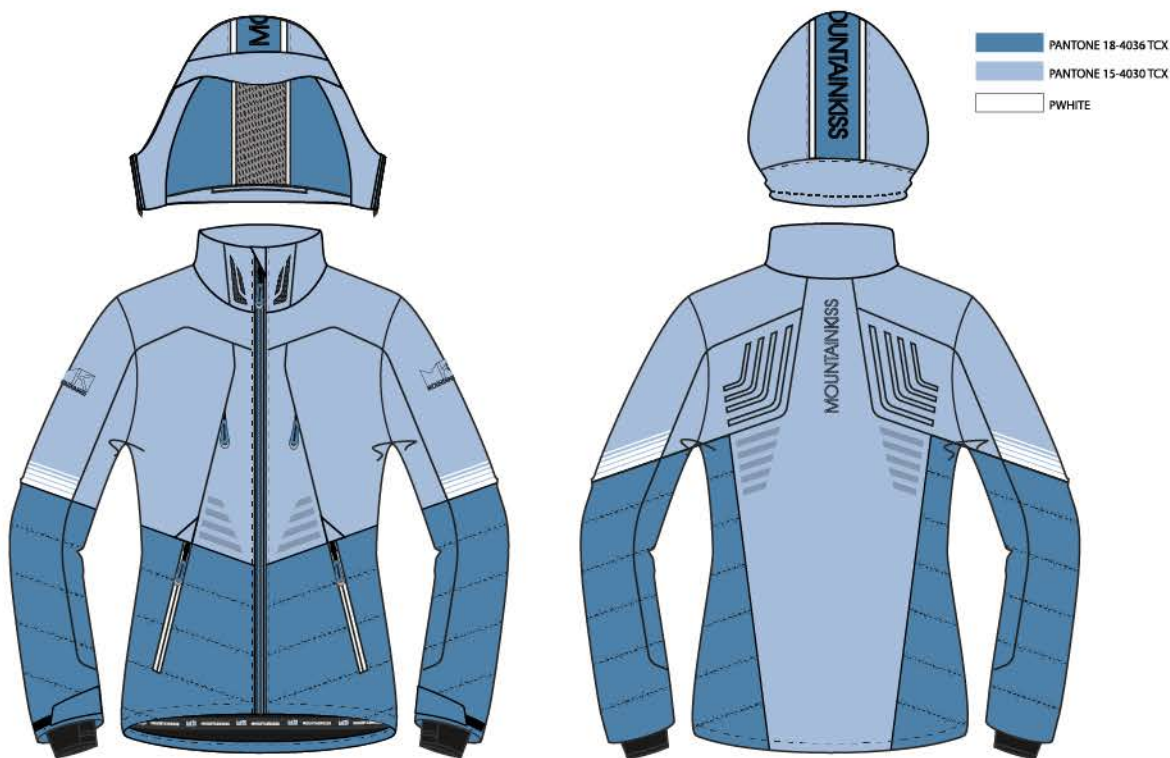
BLACK  
PANTONE 18-1662 TCX  
WHITE



# MOUNTAINKISS

## New Designs

Professional Ski Woman 306



# MOUNTAINKISS

## New Designs

Professional Ski Woman Coat 002



**MOUNTAINKISS**

**New Designs**

Professional Ski Woman Coat 004



 PANTONE 19-0515 TCX





# MOUNTAINKISS

## New Designs

Professional Ski Man Coat 102



PANTONE 19-0515 TCX



# MOUNTAINKISS

## New Designs

Professional Ski Man Coat 105

PANTONE 17-3914 TCX

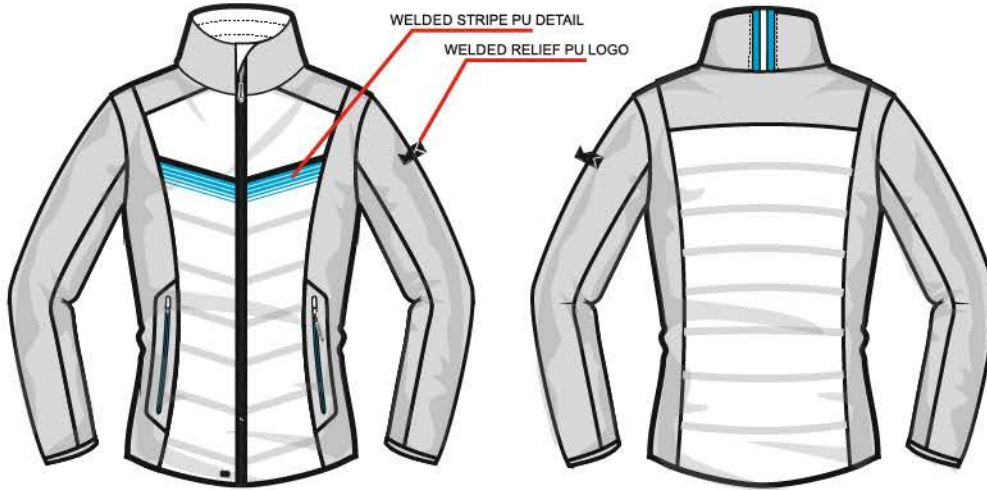


# MOUNTAINKISS

## New Designs

Second layer women 1000

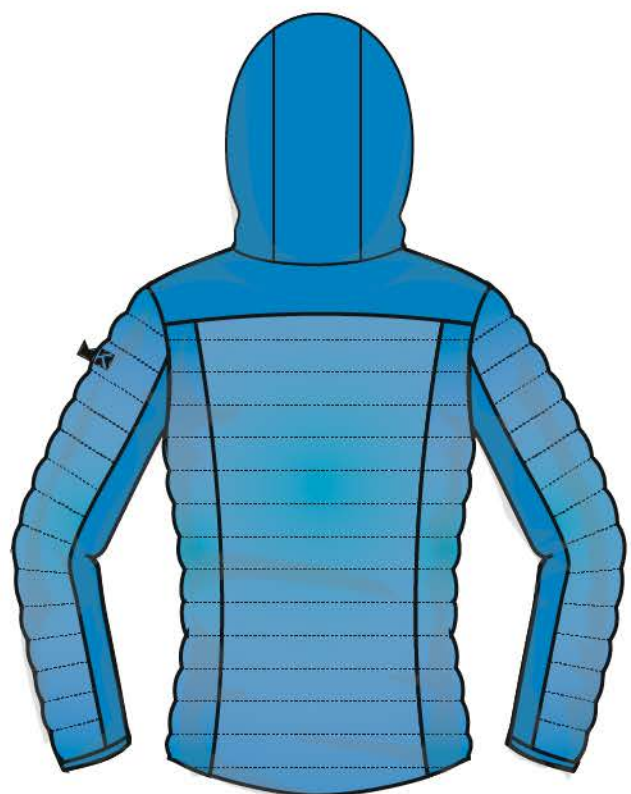
- SOFTSHELL AREA
- JACQUARD DOWN QUILTED
- LIGHT NYLON AREA



**MOUNTAINKISS**

New Designs

Second layer women 1005



# MOUNTAINKISS

## New Designs

Second layer women 1008



# MOUNTAINKISS

## New Designs

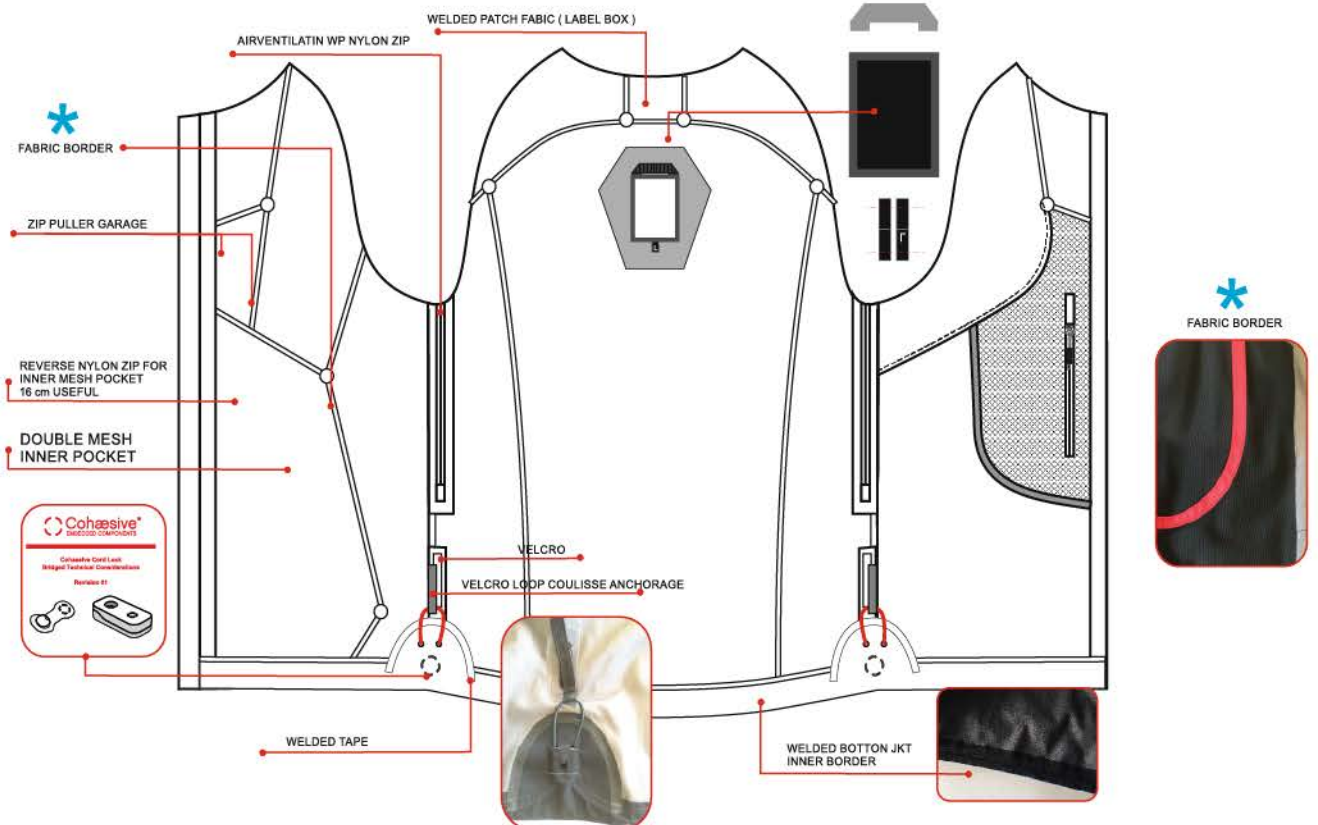
Ladies 2 layer with mesh lining102



# MOUNTAINKISS

## New Designs

Ladies 2.5 layer 104



# MOUNTAINKISS

## New Designs

Ladies 2 layer long with mesh lining 103







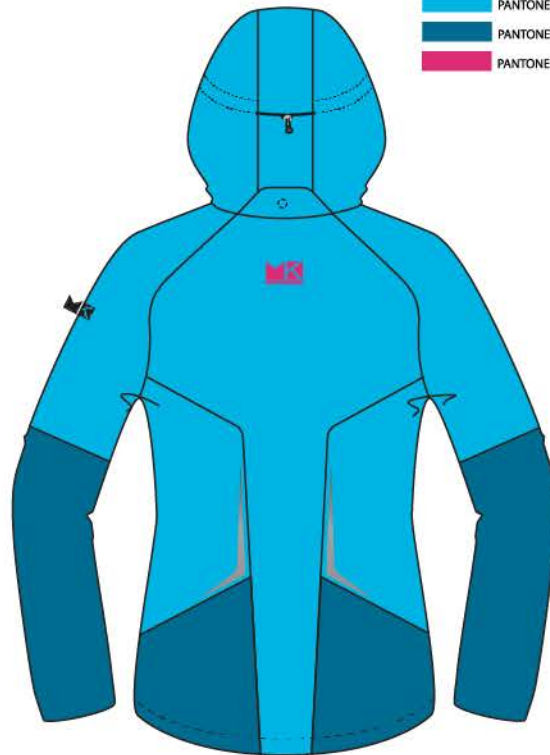
# MOUNTAINKISS

## New Designs

Ladies 3 in 1 101



- PANTONE 19-2039 TCX
- PANTONE 19-3930 TCX
- PANTONE 17-1558 TCX



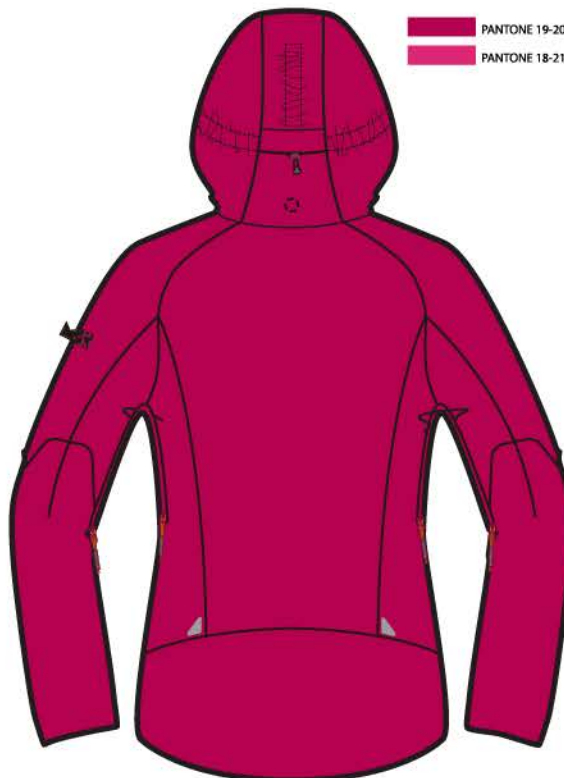
- PANTONE 17-4436 TN
- PANTONE 18-4432 TCX
- PANTONE 18-2140 TCX



# MOUNTAINKISS

## New Designs

Ladies 3 in 1 101-1



PANTONE 19-2039 TCX  
PANTONE 18-2140 TCX



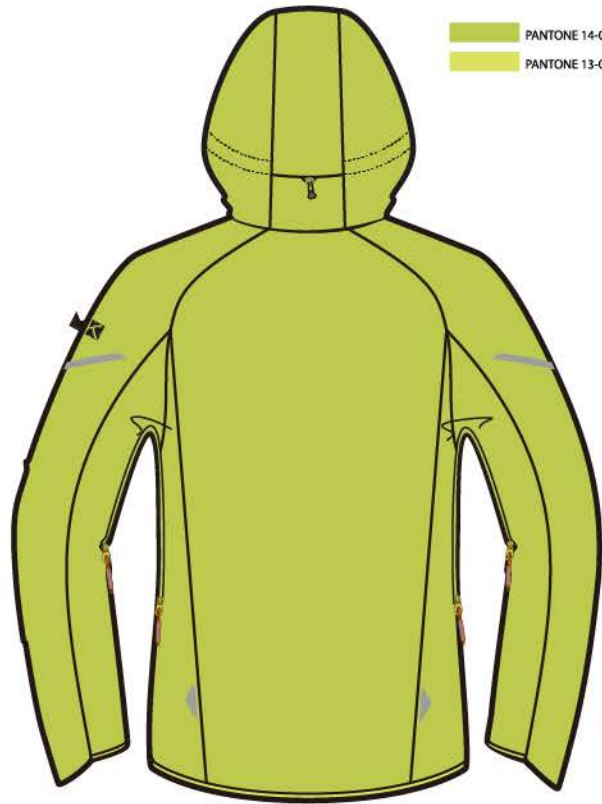
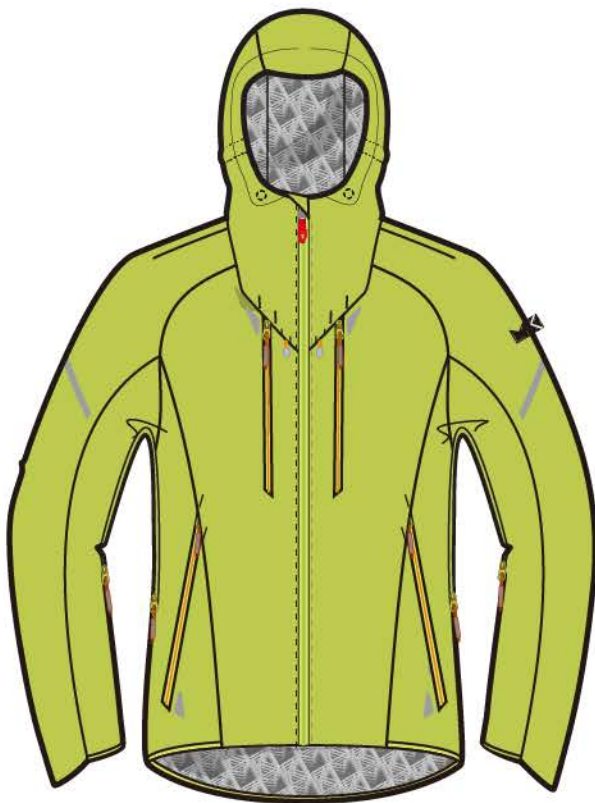
PANTONE 19-3847 TC  
PANTONE 19-3830 TCX



# MOUNTAINKISS

## New Designs

Man 2.5 layer 005

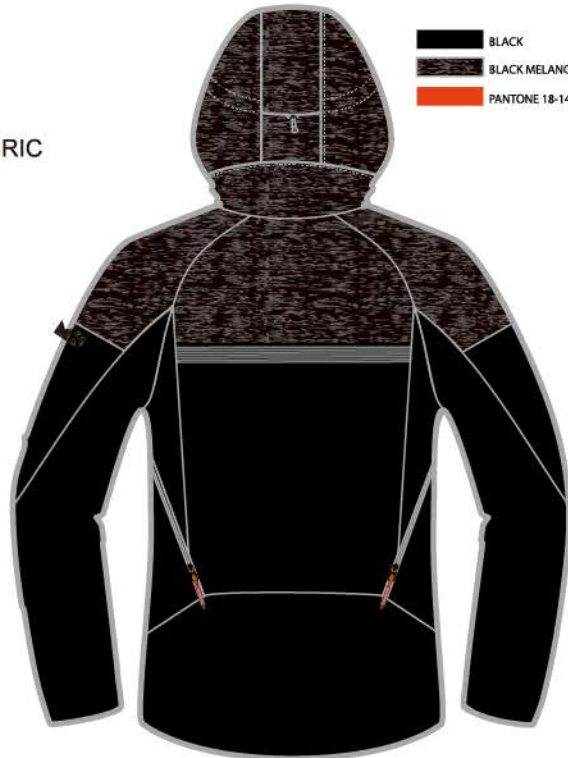


PANTONE 14-0445 TCX  
PANTONE 13-0645 TCX

Man 2 layer with mesh lining 003



JACQUARDFABRIC



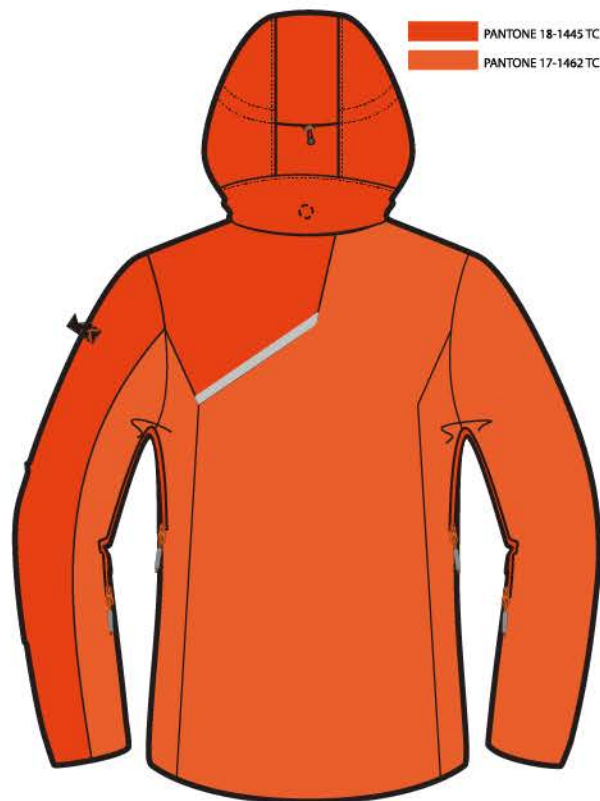
BLACK  
BLACK MELANGE  
PANTONE 18-1445 T



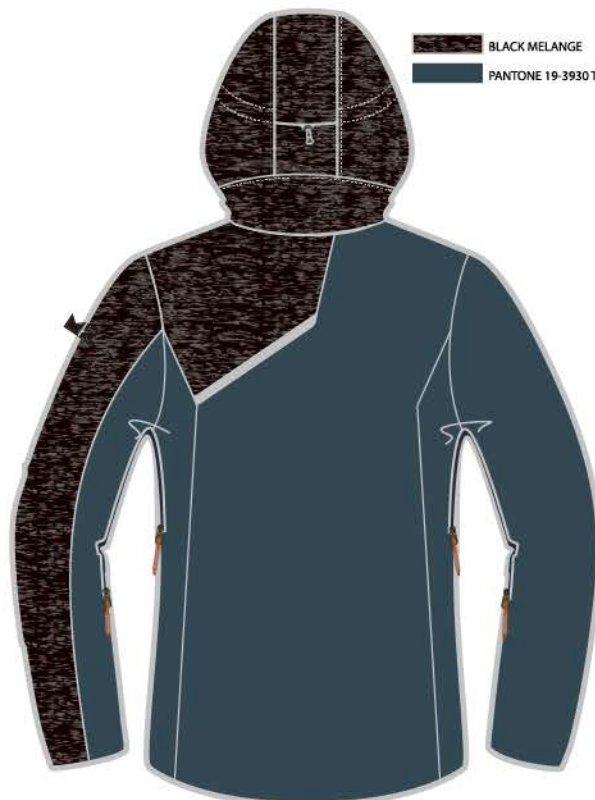
# MOUNTAINKISS

## New Designs

Man 2 layer with mesh lining 004



PANTONE 18-1445 TCX  
PANTONE 17-1462 TCX



BLACK MELANGE  
PANTONE 19-3930 T



# MOUNTAINKISS

## New Designs

Man 2 layer long with mesh lining 003



- MEDIUM GREY MELANGE
- PANTONE 19-3930 TCX
- PANTONE 17-1462 TCX

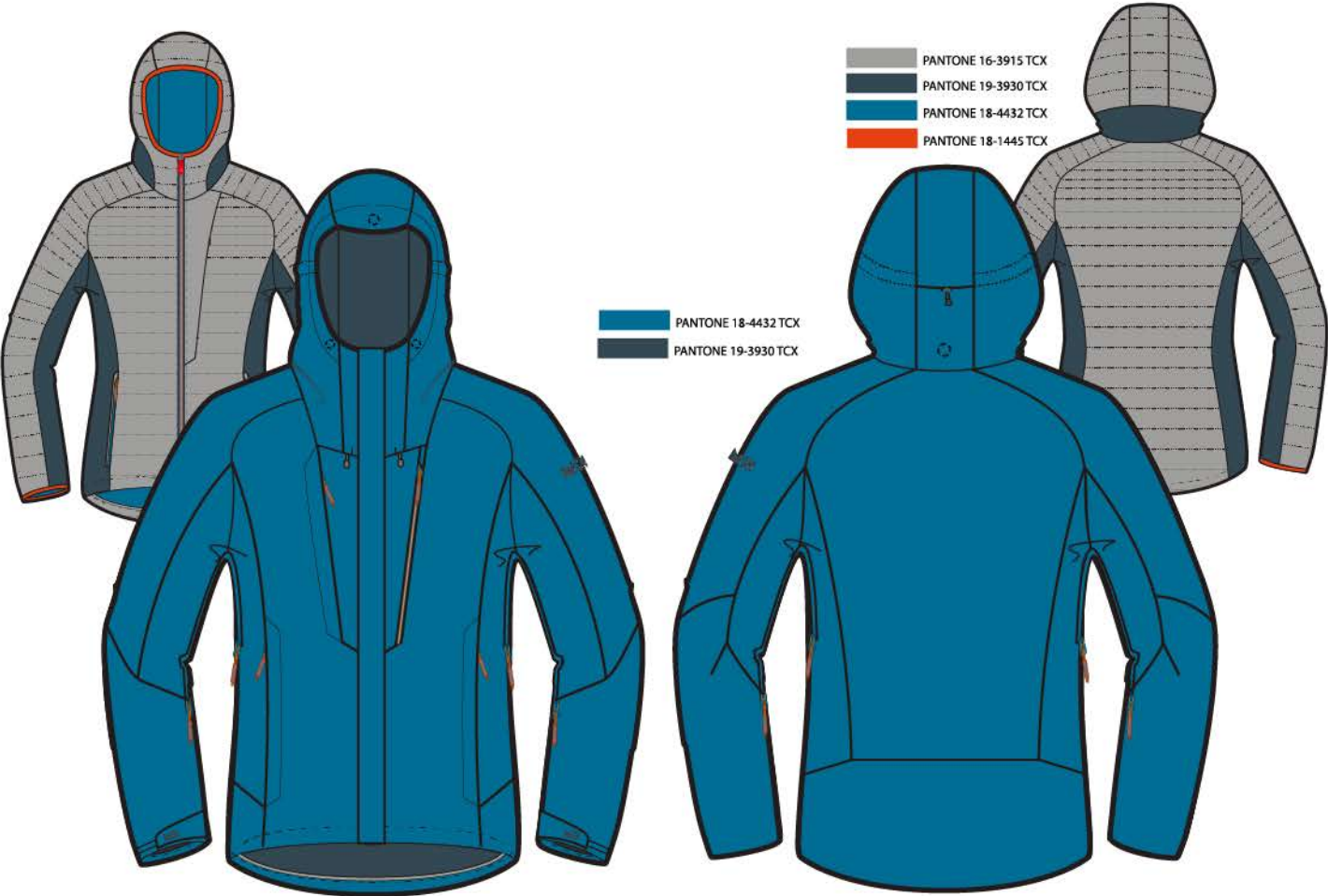


- PANTONE 19-4121 TCX
- PANTONE 19-3930 TCX
- PANTONE 17-1462 TCX



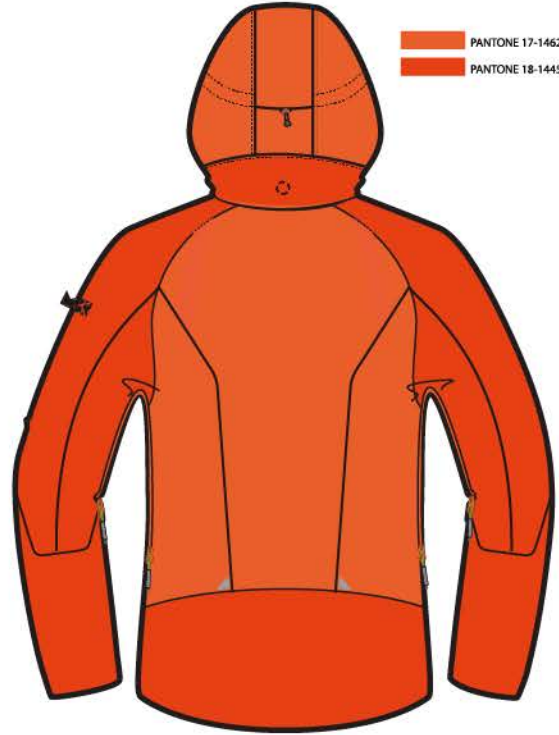
## New Designs

Man 3 in 1 005

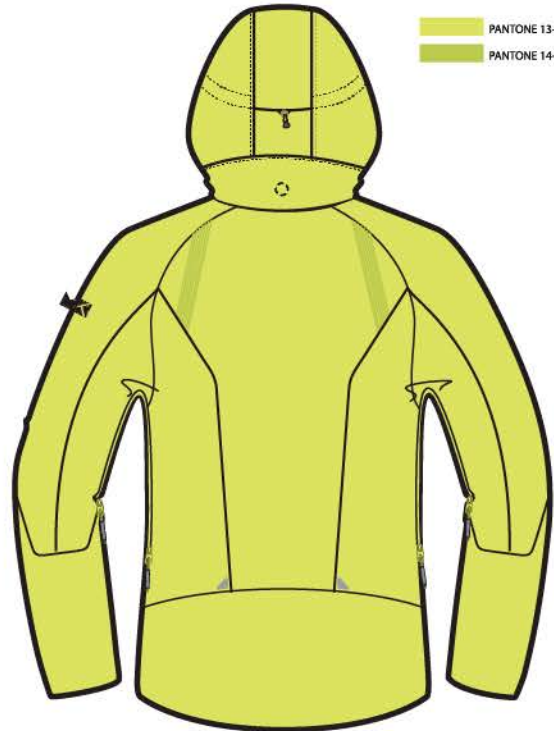


## New Designs

Man 3 layer 004



PANTONE 17-1462 TCX  
PANTONE 18-1445 TCX



PANTONE 13-0645 TCX  
PANTONE 14-0445 TCX





# MOUNTAINKISS

## New Designs

Man 3 layer 007



-  PANTONE 19-4150 TCX
-  PANTONE 19-4028 TCX
-  PANTONE 17-1462 TCX



-  PANTONE 16-3915 TCX
-  PANTONE 19-3930 TCX
-  PANTONE 17-1462 TCX



## Fabric and Technology

All of our Waterproof shell garments are using T8 Fabric

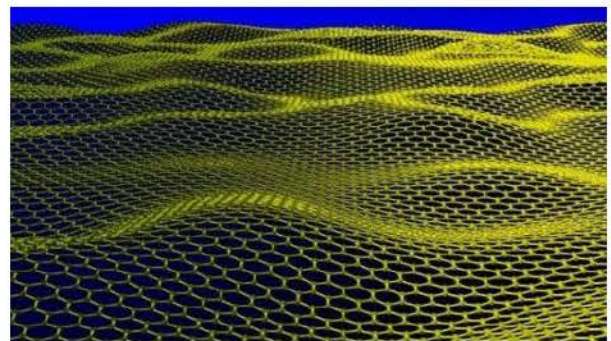
### T8 Fabric

High Stretch  
Super Cottony  
High color fastness  
Efficient wicking



### Graphene Fabric

Far Infrared  
Anti-Static  
Anti-Bacterial  
Warm and Breathable



### i Warm Device

10 Seconds  
38-53 ° C  
Blue Tooth connect  
1 button 3 gears control



### Reflective Device HV



# MOUNTAINKISS

## New Designs

Polypropylene Softshell 3 layer 001



# MOUNTAINKISS

## New Designs

Hood Softshell 3 layer 002



# MOUNTAINKISS

## New Designs

Softshell Pants 001



Softshell Pants 002



# MOUNTAINKISS

## New Designs

Powerstretch Jacquard Fleece



# MOUNTAINKISS

## New Designs

Melange Fleece 001



# MOUNTAINKISS

## New Designs

Baselayer 001



Baselayer 002



Baselayer 002





# MOUNTAINKISS

## New Designs

Running and Fitness top 001



# MOUNTAINKISS

## New Designs

Tights and Shorts for Running and Fitness



# MOUNTAINKISS

## New Designs

### Merino Baselayer 003



# MOUNTAINKISS

## New Designs

Seamless Merino Wool Baselayer 004



Seamless Merino Wool Baselayer 005



# MOUNTAINKISS

## New Designs

Cycling Jersey 001



Cycling Jersey 002



# MOUNTAINKISS

## New Designs

Cycling Jersey, Shorts, Bibs



# MOUNTAINKISS

## Future

MK will have new innovation  
on designing and manufacturing  
of Outdoor active wear.

Let' s see.....





## **MK INTERNATIONAL (HUAIAN) CO.,LTD**

**Building 39, No.98 East Shenzhen Road,  
Qingjiangpu District, Huaiian, Jiangsu, China. P.C.223001**

**Tel: 86-153-5869-1118  
mk@mountainkiss.com  
www.mountainkiss.com**