

**WISHER**

® SINCE 1972

WISHER

Sees the Invisible,  
Feels the Intangible,  
Achieves the Impossible.





”

Since 1972, Wisner has been in the textile industry for over 50 years. We are Taiwan based company with our own factories.

Specialize in producing hi-tech functional fabrics and industrial textured yarn. Innovation and sustainability are our focused topics as well.

**MILL DIRECT**

**1.**

**APPLICATION**

**2.**

**PRODUCTS**

**3.**

**4.**

**5.**

**SUSTAINABLE SOLUTIONS**

**WIELASTIC<sup>®</sup> 3.0**

**Wi-Shell 3.0**

**SUSTAINABLE**

**7.**

# MILL DIRECT

- Mills in Taoyuan City & Hinchu County  
100 % made in Taiwan
- Water jet looms: 208 set, air jet looms: 72 set,  
pin-type yarn-texturing machines: 18 set
- Woven Fabrics: capacity about 4 million  
yards monthly
- Textured Yarns: 20 tons monthly
- R&D center and In-house laboratory
- Partnership with knitting mill
- Capital: about USD 300 million
- Annually sales: about USD 500 million



# APPLICATION

## HOME TEXTILE



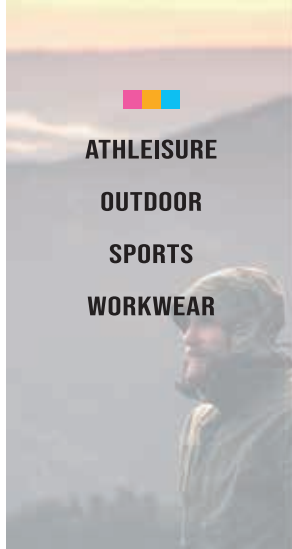
CURTAIN

PILLOW CASE

TABLECLOTH

UPHOLSTERY

## WEARING



ATHLEISURE

OUTDOOR

SPORTS

WORKWEAR

## INDUSTRIAL



PROTECTIVE CLOTH

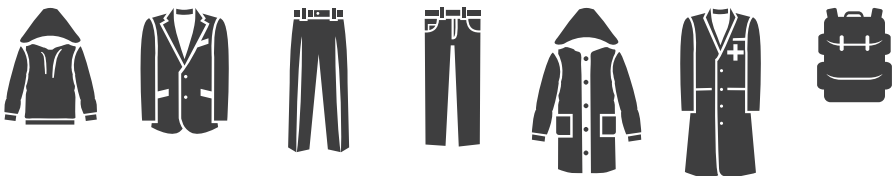
BACKPACK

STROLLER



AAMI PB70

ISO EN471



# SUSTAINABLE SOLUTIONS

- Lower Carbon Footprint Raw Materials
- Reducing the Reliance on Fossil-based Materials
- Eco Designs for the Planet
- Eco-friendly Products
- Environmental Protection Certifications



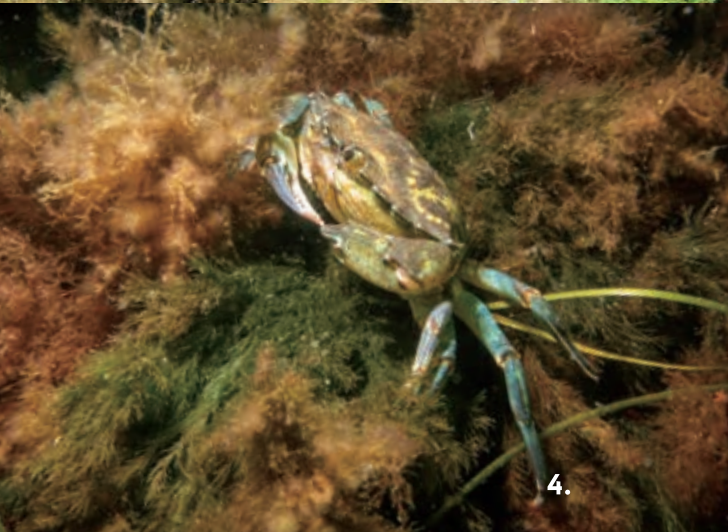
Bio-based Polyester

Polymer is partially  
plant based



Bio-based  
Water Repellent Agent

Extraction from palm  
Acquired USDA certification



Bio-based  
Natural Antibacterial Agent

Biopolymer composed of  
minerals, crab shells and  
seaweed  
Acquired USDA certification

# OUR BRAND LABEL

# WIELASTIC<sup>®</sup> 3.0

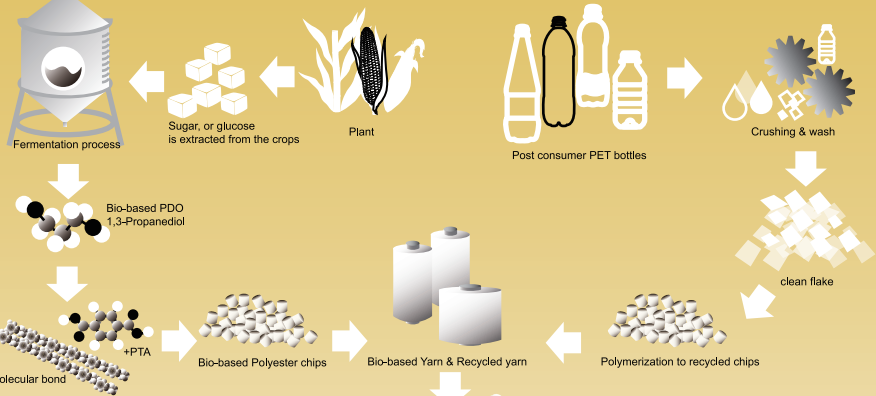
POWER BY **WISHER**

# Stretch Without Spandex

## Bio-based Polyester + Recycled Polyester

Polymer is partially plant based

From post consumer PET bottles



# WIELASTIC<sup>®</sup> 3.0



Mechanical Stretch



Dyeable & Great Color Fastness



Water & Energy-saving



Reduce Pollution

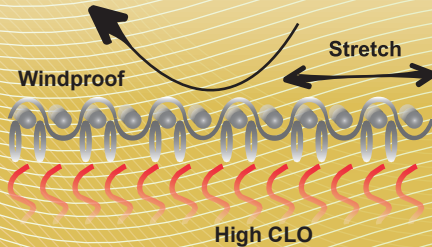
# NO SPANDEX



# OUR BRAND LABEL

# Wi-Shell 3.0

POWER BY **WISHER**



## I. One-piece Woven Fabric

- One-piece woven: one side good snagging woven; the other side fleece
- High CLO
- Comfortable stretchability just like knit fabrics
- Prevail snagging resistance and windproof ability

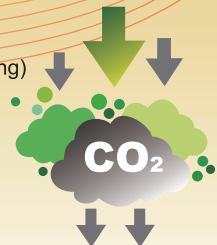
## II. Sustainability and Eco-Friendly

- Recyclable: Mono component
- Less shedding: Fiber fragment release rate as low as 0.0087(AATCC 212-2021)\*
- Zero chemical adhesive
- C0 D,W,R
- Bio-based polyester available for asking

## III. The characteristics of Wi-Shell 3.0:

- Reduce the weight for better wearing experience in multi-seasons (as outer-layer in spring & fall, mid-layer in winter)
- Excellent snagging resistance
- Without spandex for sustainable (recyclable & water and energy saving)
- Less shedding and water pollution
- Lower costs

\*Testing may vary from different pattern, the data is for references only.



# NO SPANDEX

# SUSTAINABLE

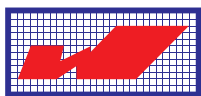
---

Wisher believes that every product will have an impact on the environment, so we try our best to strike a balance between nature and company.

Using recycled materials or inventing recyclable fabrics but remain the same comfortability is our priority. By updating certifications annually, we keep in mind that we always need to make progress.



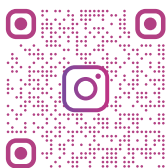
CONTACT INFORMATION



**WISHER**  
® SINCE 1972



WISHERINDUSTRIAL



WISHERTEXTILE

Head office

6F NO.62-5 XINING NORTH RD.,  
TAIPEI 10343, TAIWAN

E-mail : [service@wisher.com.tw](mailto:service@wisher.com.tw)

Tel: +886-2-25522174

Fax: +886-2-25527446

Luzhu factory

NO.367 XINXING ST., LUZHU DIST.,  
TAOYUAN CITY 33862, TAIWAN

Hsinchu factory

NO.106 XINHE RD., XINFENG TOWNSHIP,  
HSINCHU COUNTY 30472, TAIWAN

[www.wisher.com.tw](http://www.wisher.com.tw)



WISHER INDUSTRIAL CO., LTD.