



# CAROL TEXTRENDS

## 2023/24 AW

### **Sustainability without neglecting high tech performance**

From recycled yarns to water reduction, and energy processes, recyclable fabrics and trims, the entire check list of sustainable solutions featured, most importantly with performance.

The roadmap is clear, sustainability and high-tech functionality have fused in creating a cleaner tomorrow.





## Comfy Work-From-Home outfits

New styles that are both comfortable and appropriate for online meetings and calls.

## SF10LDF

Composition :NYLON 65% POLYESTER 26%  
EL 9%(CD26%)

- 🌀 Baffle stretch down proof by construction, to keep warm efficiently.

## SD90P8LD

Composition : NYLON 87% EL 13%

- 🌀 Baffle stretch down proof by construction, to keep warm efficiently.



## NK32L1

Composition : NYLON 100%

- 🌀 Crinkle outlook
- 🌀 Anti abrasion, Clear and lasting

## SE72LF

Composition : NYLON FD 88% EL  
12%(CORDURA 66.5%)

- Woven by CORDURA® yarn
- Double weave
- Good pilling and snagging physical performance.



## E106LDA2

Composition : RECYCLED POLYESTER 89% EL 11%

- 4 Way Stretch
- Double Weave vision with back side brush
- Warm touching and feel comfortable.

E097LD – Back side



**E097LD – Face side**

Composition : RECYCLED NYLON 64%  
RECYCLED POLY 29% EL 7%

- ♻️ Recycled Fabric.
- ♻️ Double weave with mélange outlook
- ♻️ 4 Way Stretch
- ♻️ Wind resistance, Keep warm and comfortable.



## Everyday Luxury Wear

Clothing is no longer purely aesthetical or functional but now also looks to express feel good style based on the union between pleasure and balance.



## SD59LDA92

Composition : NYLON FD 59%  
POLYESTER 30% EL 11%

- Interesting structure with new technology Vacuum absorption lamination Provides stretch properties for greater comfortable.




## SD90P8LD

Composition : NYLON 87% EL 13%

- Baffle stretch down proof by construction, durable warmth, less down used Less is more less sewing and less cutting.

## WS42LF

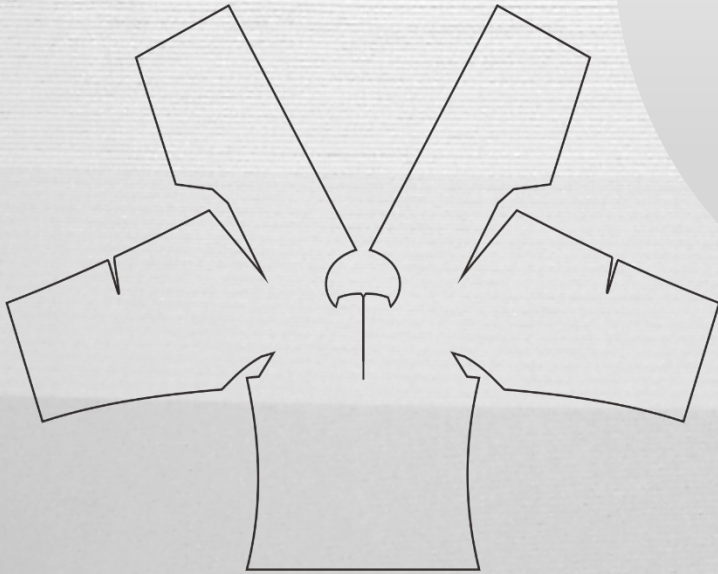
Composition : NYLON FD 85% POLY 3% EL  
12%(CORDURA 63.5%)

 Less is more

Less sewing and less cutting

More Eco-Friendly

### ONE-PIECE GARMENT CONSTRUCTION



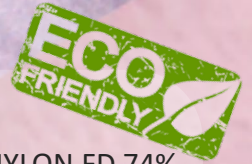




### E069LD

Composition : RECYCLED POLY 18% NYLON  
70% WOOL 4% EL 8%

- ♻️ Recycled fabric woven with **wool** material
- ♻️ Double weave
- ♻️ 4-Way Stretch



### E073LDP8D6K –

Composition : RECYCLED NYLON FD 74%  
RECYCLED POLY 26%

- ♻️ Recycled fabric , Vintage look with cotton touch
- ♻️ Good physical performance
- ♻️ Wind Resistance and Moisture Permeability

## Workwear

Choosing the right workwear fabric is not just about how the garment fits. It is also about considering its effect on the planet.





### E119LDDAK

Composition : RECYCLED POLY 63%  
POLYESTER 37%

- ♻️ Recycled fabric
- ♻️ Corduroy outlook with 2-layer finished
- ♻️ Fashion and Function



### SE73LD

Composition : NYLON FD 67% POLY 33% ///  
(COOLMAX W/LYCRA 33%)

- ♻️ Woven by COOLMAX® with stretch
- ♻️ Warm touch and comfortable
- ♻️ Denim outlook



### SF11LD

Composition : NYLON 82.5% WOOL 6%  
EL 11.5%

- 🌀 **Wool** material
  - 🌀 Double weave vision
  - 🌀 4 Way Stretch
- Keep body warm.



### NK32L1

Composition : NYLON 100%

- 🌀 Crinkle outlook
- 🌀 Anti abrasion,  
Clear and lasting



### E039LDD6K

Composition : RECYCLED POLYESTER 58%  
POLYESTER 42%

- 🌀 Oxford structure with mélange outlook
- 🌀 Soft and strong physical performance
- 🌀 Wind Resistance and Moisture Permeability



### E039LDP8D6K

Composition : RECYCLED POLYESTER  
58% POLYESTER 42%

- 🌀 Oxford structure with mélange outlook
- 🌀 Soft and strong physical performance
- 🌀 Wind Resistance and Moisture Permeability



## Luxury Ski Wear

To hit the slopes in style, of course,  
but not at the cost of practicality.



### E068LDA83

Composition : RECYCLED POLY 15%  
NYLON 76% EL 9%

- ♻️ Recycled fabric
- ♻️ 3D special structure make fabric look more interesting
- ♻️ Vacuum adsorption lamination for keeping good stretch



### M229LDD6K

Composition : NYLON 49% POLYESTER 51%

- ♻️ Oxford structure with bright and style outlook
- ♻️ Soft and strong physical performance
- ♻️ Wind Resistance and Moisture Permeability

## T110A11

### Composition :

Face: **S740LD** NYLON 66 FULL DULL 69%  
EL 31%

back: **00KS9065** POLYESTER 93% EL 7%

- High functional 3 layer fabric
- Provides stretch properties for greater comfortable



## K110A03

Composition :POLYESTER 95% EL 5%

- 3D special structure make fabric look ,fancy look

## B38303

### Composition :

Face: **E117LD** RECYCLED NYLON 88%  
EL 12% ///

back: **K252** RECYCLED POLYESTER 100%

- High functional 3 layer fabric
- New technology Vacuum absorption lamination
- Provides stretch properties for greater comfortable







CAROL  
TEXTILE  
CO., LTD

**THANK YOU**

CAROL TEXTILE CO., LTD.

12FL,81 CHENG TEH RD. SEC. 2,TAIPEI 10353,TAIWAN

T. +886-2-2558 3730

F. +886-2-2558 3786

[WWW.CAROLTEX.COM](http://WWW.CAROLTEX.COM)