

**Who cares?**

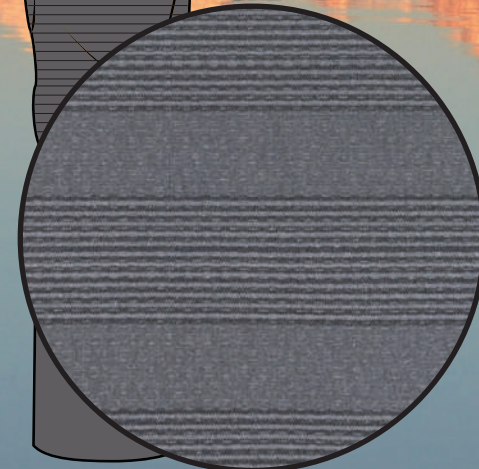
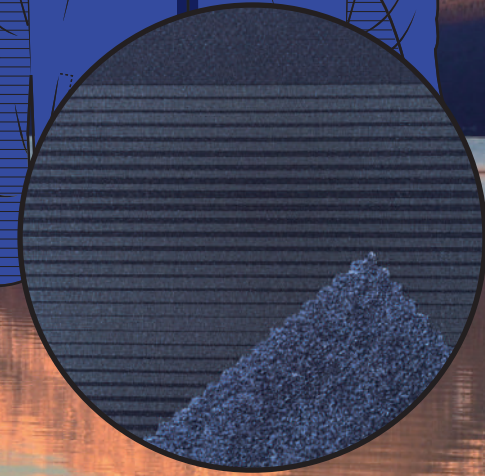
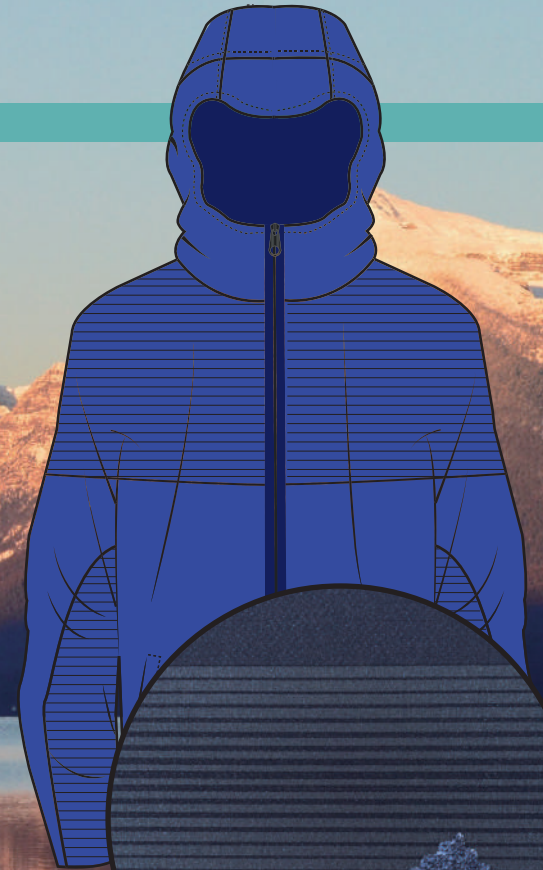
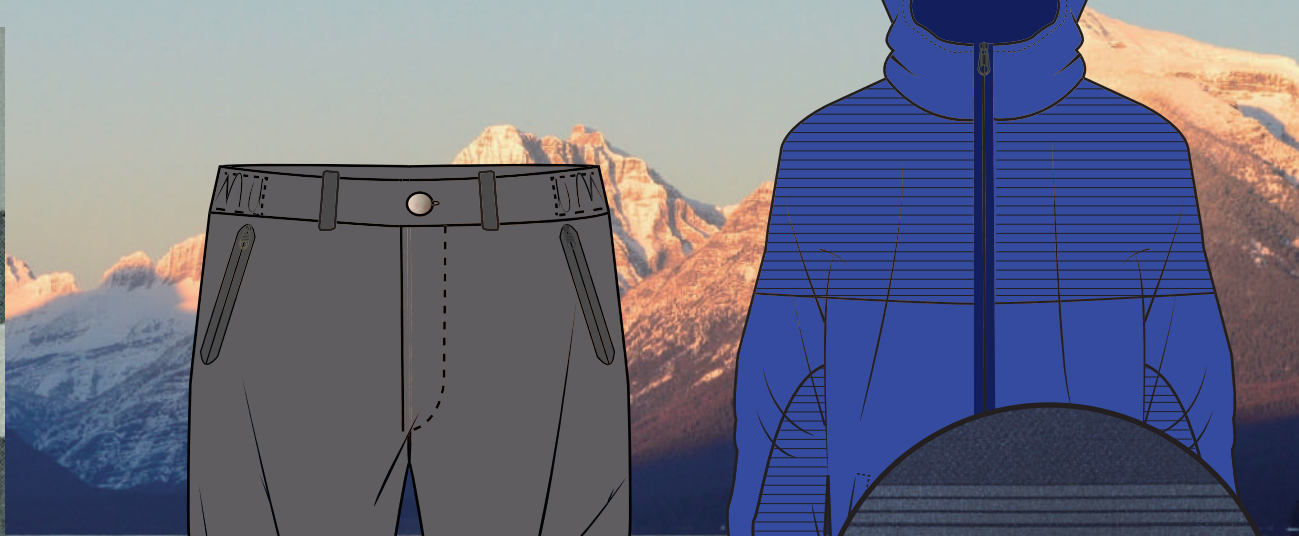
**Carol all cares.**



**2023 Collection**

**Carol Textile Co., Ltd**

# Body mapping



**It is a weave revolutionary that we combine multi-construction in one fabric. Using the unique technology reduce weight and increase performance.**

**Over two textures in one fabric. It can use in seamless garment or any outdoor type.**

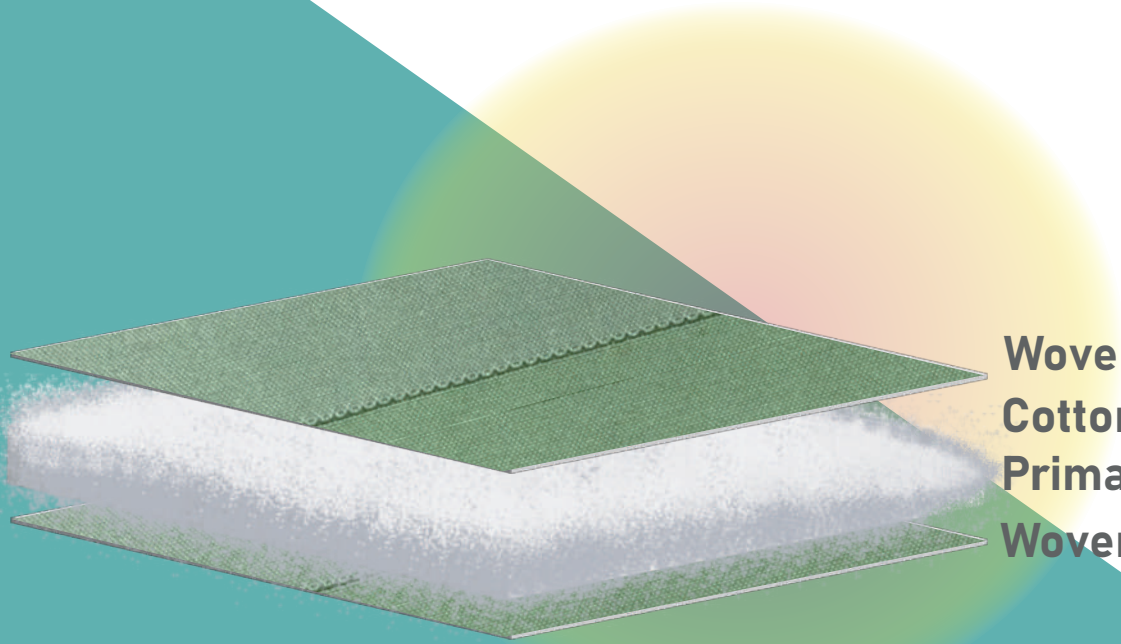
# AIR ZONE-SHELL



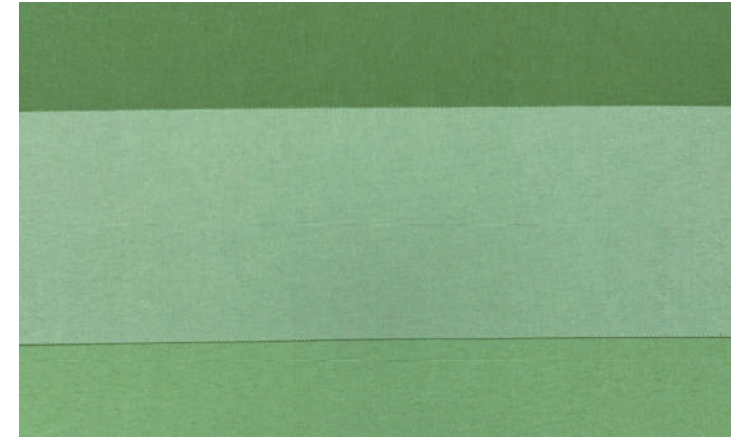
## SHELL

Different to those traditional bonding and quilting fabrics, thicker yarns are engineered weaved in 3D items to create a unique insulation in fabrics.

# AIR ZONE-THERMO



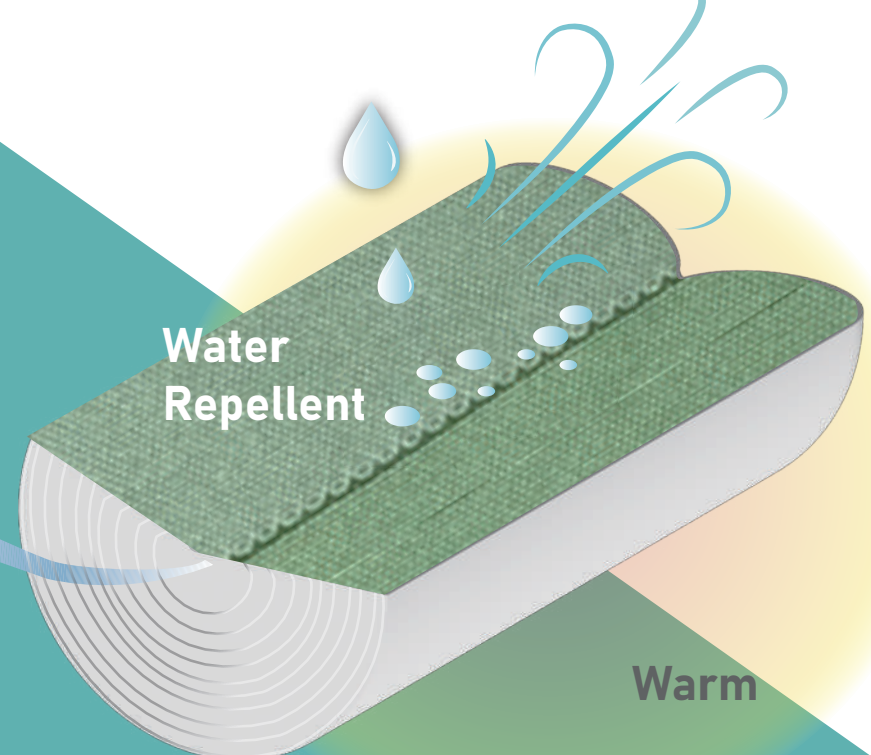
Woven  
Cotton/Polyball  
Primaloft  
Woven



Wind resistant

## THERMO

Durable water repellent, integrated-molding, seamless design, water won't seep into the seams, avoid cold spots to provide body enduring warmth, competitive price.

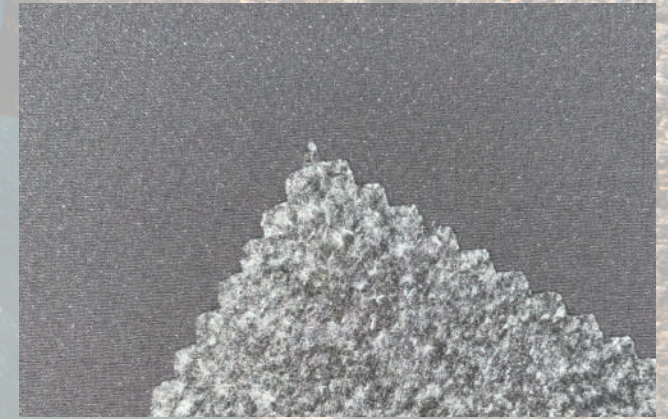
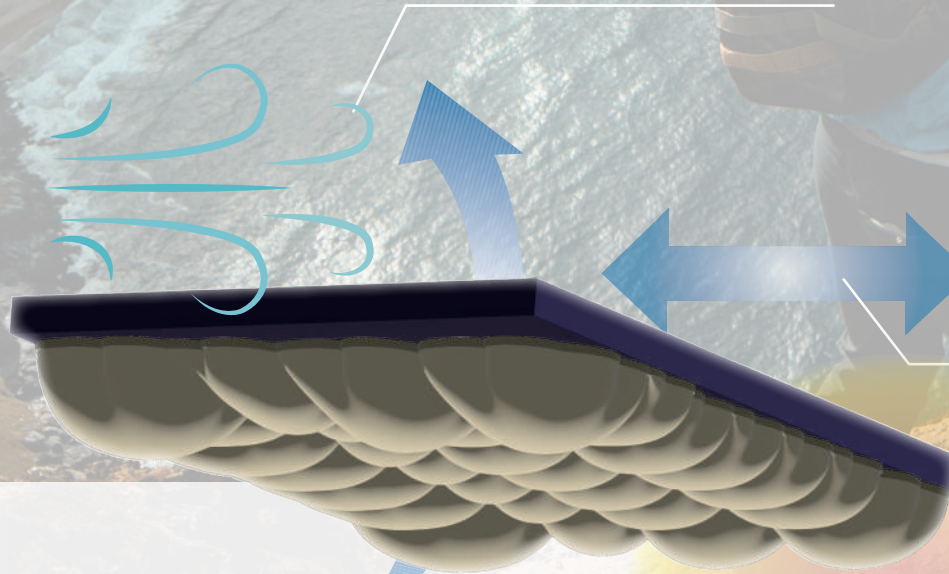


Water  
Repellent

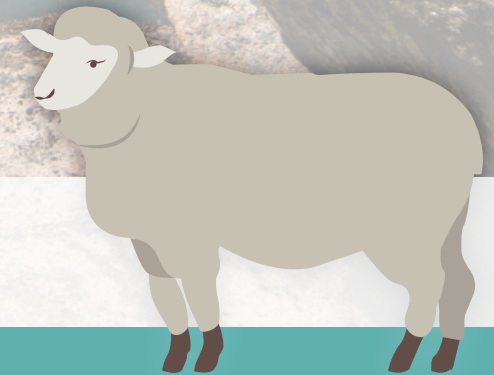
Warm

# Woollike

Wind resistant



Stretch

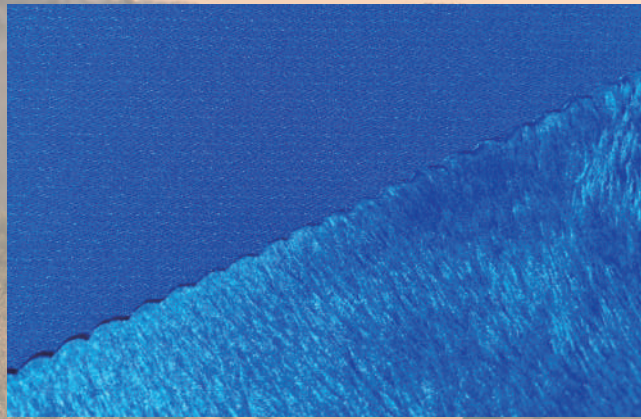


Breathable

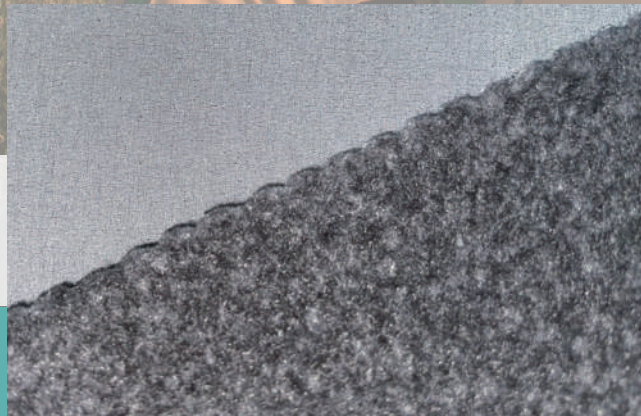
Warm

Filament soft like wool, good at stretch and wind resistant also can use recycled fibers double weave. Achieve functional and warm wearing experience.

# Woven Fleece



Backside fleece



Backside Polar fleece



Wind resistant

Stretch

Breathable

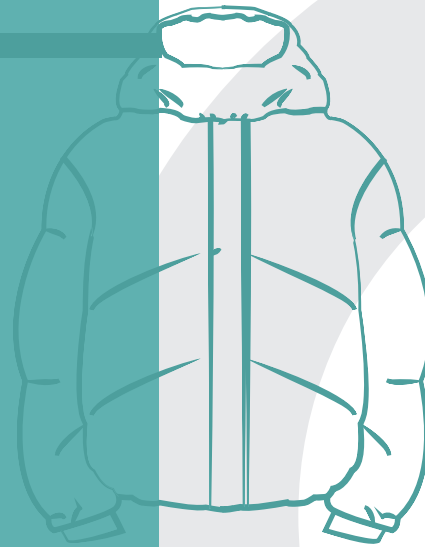
Warm

Woven faced backside brush,  
two-sided interweaving technology,  
good in stretch, keep warm and  
wind resistant. Let's go camping!

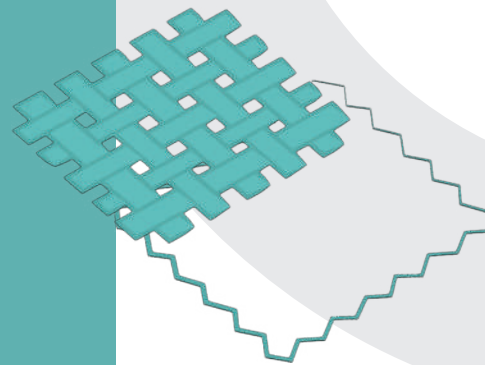


# ECO Friendly Polyester recycling

We dedicated a lower-impact environment, Carol has developed the fabric that is made from recycled PET bottles.

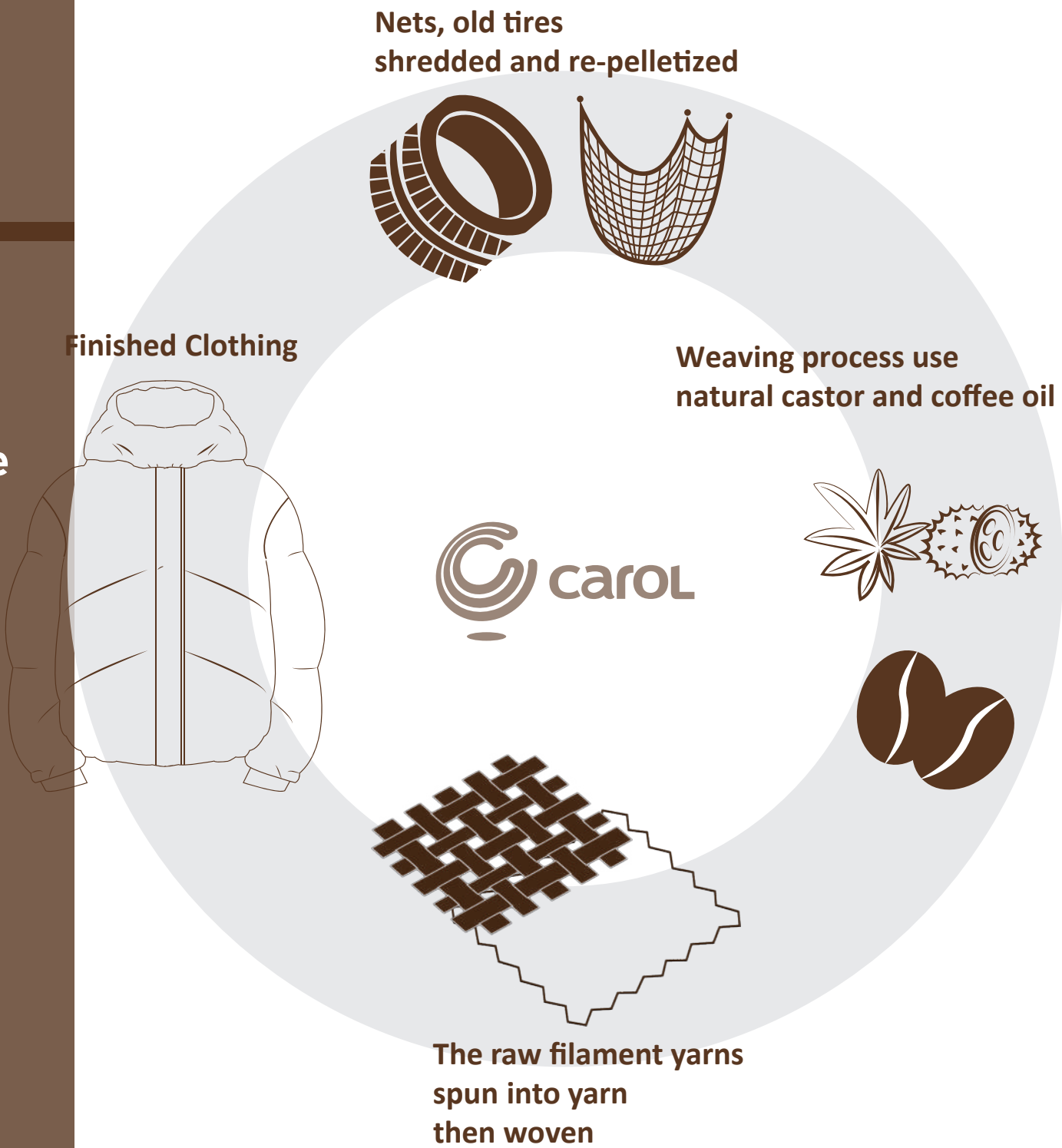


Chopped bottles processed into chips



# ECO Friendly Nylon recycling

Same as polyester recycling,  
used fishing nets, old tires to  
make yarn,  
In the weaving process, we use  
natural castor and coffee oil to  
create the overall recycling  
cycle.





# Stretch your life

what can you choose...

Two way stretch

Four way stretch

Mechanical stretch

Sustainable for stretch



Good at  
Tension and Elongation



Sustainability



Fast dry

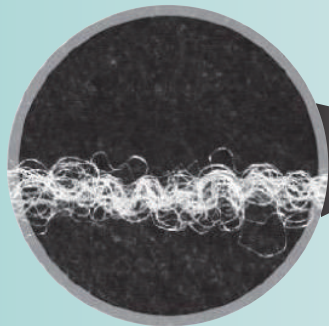
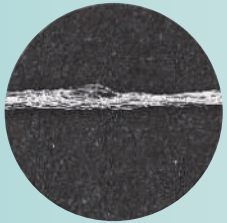


# SOUFFLEXz

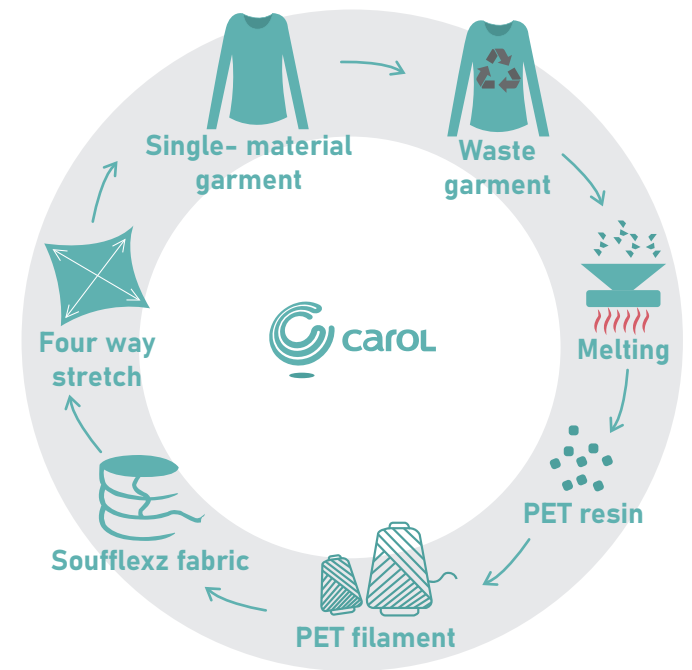


Soufflexz is soft and springy like a soufflé! Double helix technology allows the yarn to stretch without adding spandex and super soft feel. Carol creates sustainable and unique fabric.

Regular polyester



Soufflexz



Plush



Lightweight



Stretch



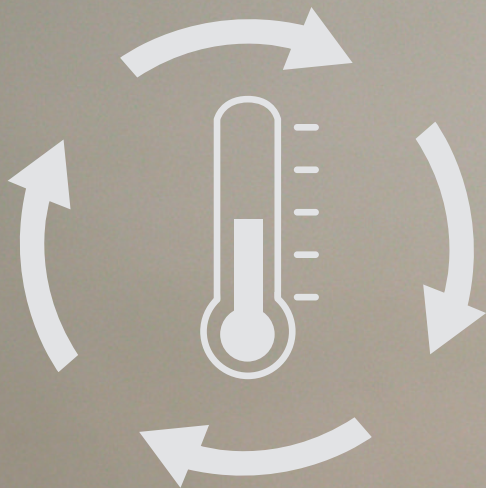
Sustainability

# Performance wool



Wool's thermoregulating comfort that it is becoming more prevalent in activewear.

The wool fabric mixed with elastic fiber provides stretch protection.



**Thermal-regulation**

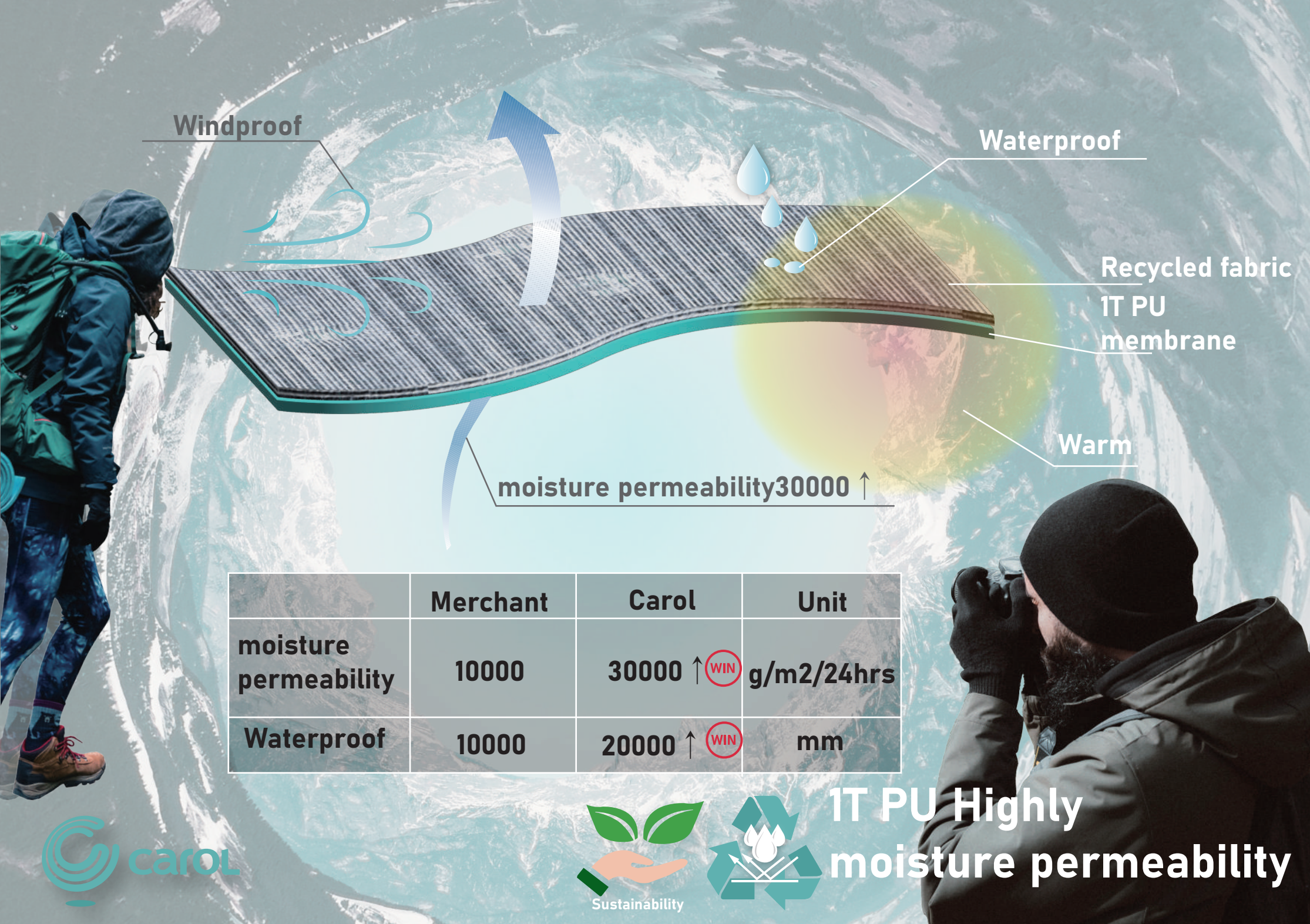


**Anti-odor**



**Moisture management  
breathable**





Windproof

Waterproof

Recycled fabric  
1T PU  
membrane

Warm

moisture permeability 30000 ↑

	Merchant	Carol	Unit
moisture permeability	10000	30000 ↑ WIN	g/m2/24hrs
Waterproof	10000	20000 ↑ WIN	mm



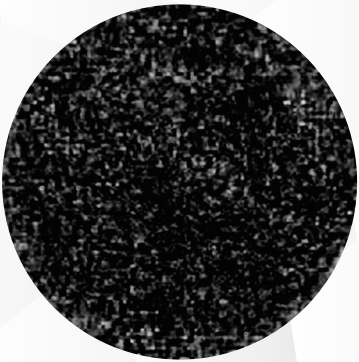
1T PU Highly moisture permeability

# Graphene

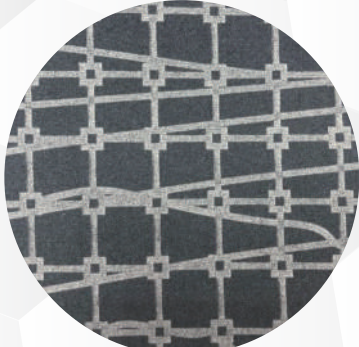
Graphene is a basic natural element for the other graphitic materials. Graphene fabric transfer the body temperature from the higher part to the lower part, the body thermal-regulation. Keep warm and water repellent in outdoor activities. Special print design constant temperature.



Graphene



Graphene powder



Print



Fabric



Thermal-regulation



Sustainability



UV protection



Antistatic



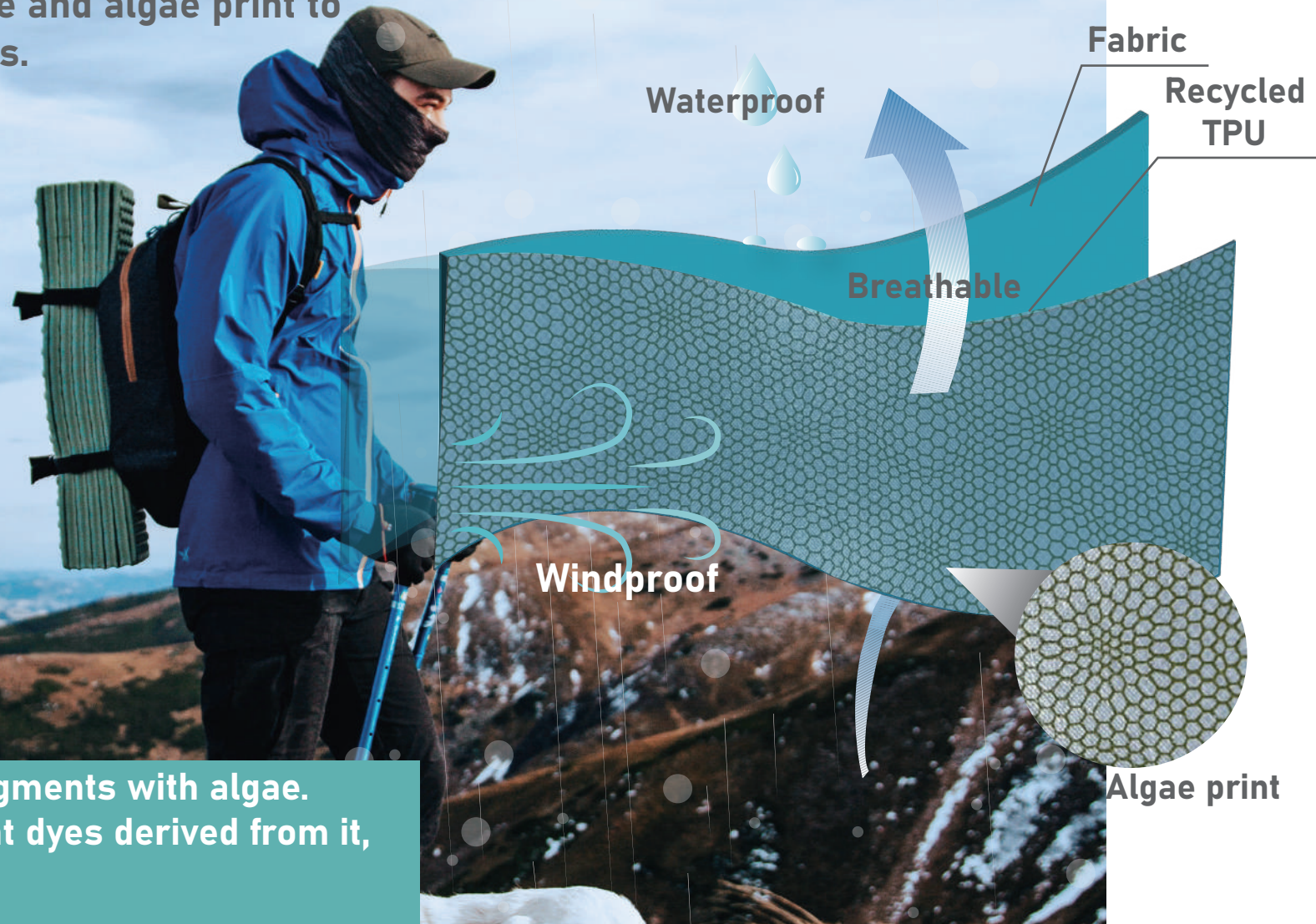
Water repellent

# Recycled TPU+Algae print



## 2.5, 3-layer

Efficient and reliable waterproofing and breathable are a strong focus across multilayer textiles. Carol uses recycled TPU membrane and algae print to design the sustainable fabrics.



Replace chemical dyes and pigments with algae. Algae can be skin friendly, print dyes derived from it, is softness and comfort.

CAROL TEXTILE CO., LTD.  
12FL, No.81 Cheng Teh Rd. Sec. 2, Taipei 10353,  
Taiwan  
+886-2-2558 3730  
+886-2-2559 3016

