

**SHEP
HERD**

CERTIFICATES – ISO9001:2015



**SHEP
HERD**

CERTIFICATES – OEKO-TEX 100



SHEPHERD

CERTIFICATES – RWS

CERTIFICATE
 CERTIFICATE No: CB4576-02-2018
 REGISTRATION No: CU 854576

Field of attention:
RWS
 Chain of Custody

Signed for:
Zhangjiagang Shepherd Inc
 Yingshan Rd, Fenghuang Town

Zhangjiagang
Jiangsu CHINA

Standard:
Responsible Wool Standard (RWS)

Valid until: 29 December 2019

Control Union Certifications declares to have inspected the unit(s) and/or product(s) of the above mentioned client, and have found them in accordance with the standards mentioned above.

This certificate covers the unit(s) and/or product(s) as mentioned in the aforementioned areas of this certificate. This document has been issued on the basis of the Responsible Wool Standard owned and managed by the Wool Exchange. The declared operator has submitted his activities under control, and meets the requirements laid down in the named Standard.

This certificate remains in force until further notice, provided that the client continues to meet the conditions as laid down in the client contract with Control Union Certifications and verified by annual inspections by Control Union Certifications.

Date of certification:
 13 November 2018
 Place and date of issue:
 Shanghai, 03 December 2018

Declared by: *PP C X J J*
 On behalf of the Managing Director

Mr. W Lifu
 Certifier
 Control Union Certifications
 Meihuomenqiao 4-6
 8011 82 JIANGSU
 The Netherlands
<http://www.controlunion.com>
 tel: +31(0)20 6236000




page 0/1

Arrow to CERTIFICATE No: CB4576-02-2018
 REGISTRATION No: CU 854576
RWS
 Chain of Custody

Zhangjiagang Shepherd Inc
 Yingshan Rd, Fenghuang Town
 Zhangjiagang
 CHINA

This certificate covers the following PRODUCT(S) which meet(s) the criteria of the RWS Standard.

Product no.	Name of product	Processing unit(s)
F 12647	Superino - 100% RWS Certified Wool	PKC 00000
F 14370	Superino 100% RWS Wool	PKC 00000

This certificate covers the following PROCESSING UNIT(S) and PROCESS(S), which meet(s) the criteria of the RWS Standard.

Processing units

Unit no.	Name of unit	Unit ref.	Address	No. of production units	Process
PKC 00000	Zhangjiagang Shepherd Inc		Yingshan Rd, Fenghuang Town Zhangjiagang, Jiangsu CHINA		Spinning, Ringing, Manufacturing

This certificate (including the arrow) remains property of Control Union Certifications and can be withdrawn in case of deviations as mentioned in the license contract, or in case changes or deviations of the above mentioned data occur. The licensee is obliged to inform Control Union Certifications immediately of any changes in the above mentioned data. Only an original and signed certificate is valid.

Date of certification:
 13 November 2018

Place and date of issue:
 Shanghai, 03 December 2018



Authorized by: *PP C X J J*
 On behalf of the Managing Director
 Mr. W Lifu
 Certifier

This certificate cannot be used as guarantee certificate for delivered goods!

page 2/2

**SHEP
 HERD**

VISION :

**BE YOUR PARTNER FOR COMPLETE
MANUFACTURING: FROM KNITTED
FABRICS TO FINISHED GARMENTS.**

**SHEP
HERD**

WE COVER YOUR ACTIVITY

We develop innovative ensembles and collections



Outdoor Sports



High-Impact sports



Low-Impact Sports



Essentials



Horse-Riding



Golf



Tennis



Sailing



Lifestyle



Workwear
(coming end of 2017)

**SHEP
HERD**

NOT ONLY MERINO

Raw materials fabric and blends



Merino



Alpaca



Silk



Cashmere



Synthetic Films



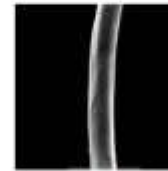
Yak



Camel



Bamboo



Synthetic Fibers

- Main focus on Merino Wool
- Natural fibers as Yak, Silk, Camel, Cashmere, Alpaca And Bamboo (intimate and knitted blends possible)
- Synthetic fibers as Polyester, Polyamide and Reflective (blends possible)
- Laminates and bonding (1st layer, 2nd layer and 3rd layer)
- Innovative woven fabrics from third party partners, to create hybrid garments
- Fully personalised fabrics made bespoke for your Brand

VERTICALLY INTEGRATED



**SHEP
HERD**

VERTICALLY INTEGRATED



**SHEP
HERD**

VERTICALLY INTEGRATED



**SHEP
HERD**

BIG WORKING CAPACITY

MONTHLY 350,000 PIECES

MONTHLY 400,000 METER

**SHEP
HERD**

PARTNERS



**SHEP
HERD**

NEW PARTNERS ON BOARD



**SHEP
HERD**

The logo for Shepherd is a dark grey square containing the words "SHEP" and "HERD" stacked vertically in a white, bold, sans-serif font.

THE FIRST AND ONLY OFFICIALLY STRATAGIC PARTNER
WITH MICROSOFT, HOLOLENS IN TEXTILE ON THE WORLD



**SHEP
HERD**



**SHEP
HERD**

CONCEPT GARMENTS FOR TRADESHOWS DEVELOPED BY SHEPHERD

We develop innovative ensembles and collections

Outdoor Sports



Ski Mountaineering Concept

Trekking Concept

Hiking Concept

**SHEP
HERD**

CONCEPT GARMENTS FOR TRADESHOWS DEVELOPED BY SHEPHERD

We develop innovative ensembles and collections

Low Impact Sports



Yoga 3D Concept

Yoga All-in-one Concept

Yoga Layer Concept

**SHEP
HERD**

CONCEPT GARMENTS FOR TRADESHOWS DEVELOPED BY SHEPHERD



SHEPHERD

CONCEPT GARMENTS FOR TRADESHOWS DEVELOPED BY SHEPHERD



**SHEP
HERD**

CONCEPT GARMENTS FOR TRADESHOWS DEVELOPED BY SHEPHERD



**SHEP
HERD**

CONCEPT GARMENTS FOR TRADESHOWS DEVELOPED BY SHEPHERD



**SHEP
HERD**

ESSENTIAL GARMENTS



**SHEP
HERD**