



PLAID-OLOGY™

By  Burlington®

bluesign®

SYSTEM
PARTNER

The Study of piece-dyed plaids

There's more to coloring plaids than staying inside the lines - it's a science; and it's why we created Plaid-ology™, your guide to piece-dyed plaids and on-trend, curated color showcase to inspire your inner artist.

Unlock endless color possibilities with Plaid-ology piece-dyed plaids.

Advantages of piece-dyed versus yarn dyed:

- Shorter lead times
- Low minimum order per color
- Multiple pattern sizes and repeats
- Vast array of color ways
- Customizable to meet your seasonal needs
- Can be matrixed with any Burlington® Labs technology

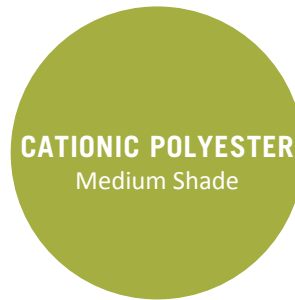
One Fabric

three different looks

3=1

Build a diverse shirting collection that features 3 different looks, with just one plaid fabric.

Each three-color plaid features three fibers:



Choose to dye just one, two,
or all three for completely
different looks.

LOOK NO.1 - 2 COLOR PLAID



- Nylon
- Disperse Polyester

LOOK NO. 2 - 2 COLOR PLAID



- Cationic Polyester
- Disperse Polyester

LOOK NO. 3 - 3 COLOR PLAID

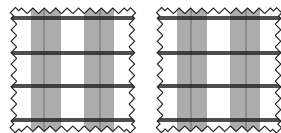


- Nylon
- Cationic Polyester
- Disperse Polyester

PLACING YOUR ORDER



- 1 Choose one of our existing plaid patterns or submit your own electronic plaid design and Pantone colors



- 2 Lab dips for first look (10 days lead time)



sample

- 3 **Sample Order:** 50-100 meters (20-30 days lead time)



bulk

- Bulk Greige Order:** Contact your sales representative for MOQ



- 4 Lead time for bulk including greige, dyeing, and finishing

Unusual Plaids

with hidden stripes

In cases where a plaid fabric has nylon going only in one direction, you could reveal an unexpected stripe pattern. Here's how to find hidden stripes:

- Spot a plaid with low nylon content
- Nylon only in warp for vertical stripe
- Nylon only in weft for horizontal stripe
- Dye only the Nylon (darkest shade)



UNUSUAL PLAID - EXAMPLE NO.1 - J2848

Content: 91% Poly (21% CD) 5% Nylon 4% Spandex

Warp: Poly/Heather Nylon/Heather CD

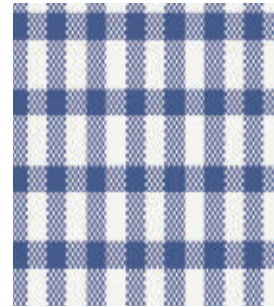
Weft: Poly/Heather CD



- Nylon
- Cationic Polyester
- Disperse Polyester



- Nylon
- Cationic Polyester



- Cationic Polyester



- Nylon

UNUSUAL PLAID - EXAMPLE NO.2 - J2915

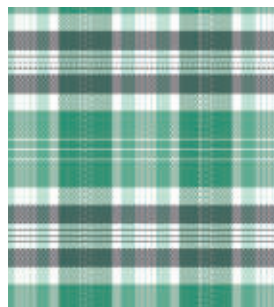
Content: 91% Poly (21% CD) 5% Nylon 4% Spandex

Warp: Poly/CD/Heather CD

Weft: Poly/CD/Heather Nylon



- Nylon
- Cationic Polyester
- Disperse Polyester



- Nylon
- Cationic Polyester



- Cationic Polyester



- Nylon

Blue Moon Dreams



Nebulas
Blue
18-4048



Mediterranean
Blue
18-4334



Blue
Heaven
17-4023



Dream
Blue
15-4005



Micro
Chip
14-4105



Blanc de
Blanc
11-4800



Navy
Blazer
19-3923



Majolica
Blue
19-4125



Military
Olive
19-0622



Sulphur
14-0755





Minty Breeze



Tawny
Orange
17-1341



Navy
Blazer
19-3923



Majolica
Blue
19-4125



Ocean
Depths
19-4535



Oil Blue
17-5111



Pelican
14-6305



Pale Aqua
13-5305

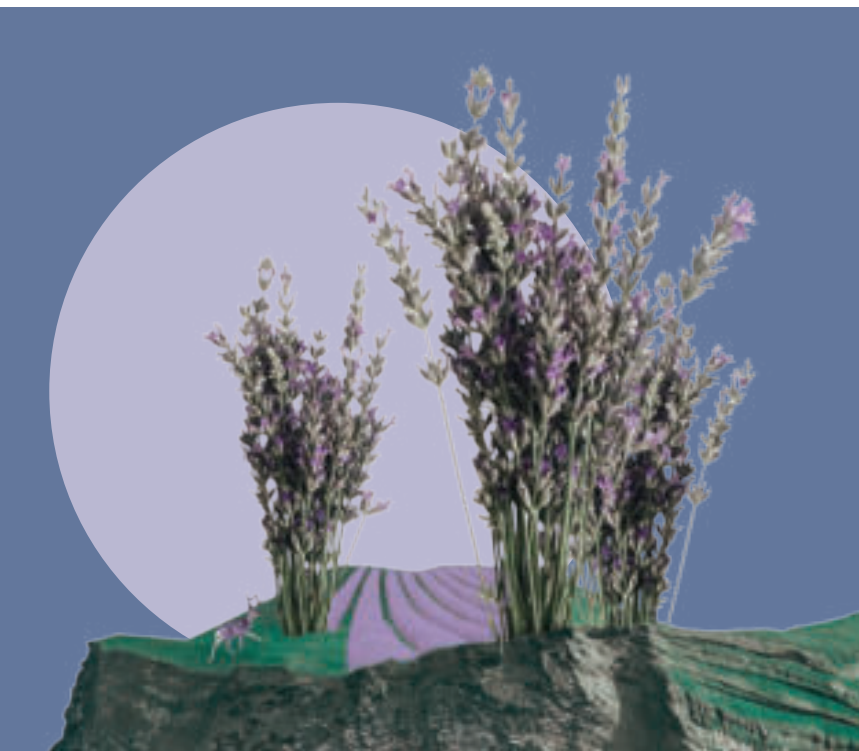


Blanc de
Blanc
11-4800





Lavender Fields



Navy
Blazer
19-3923



Mallard
Green
19-4818



Bayou
18-5121



Marlin
18-3932



Colony Blue
17-3923






Purple
Heather
14-3911

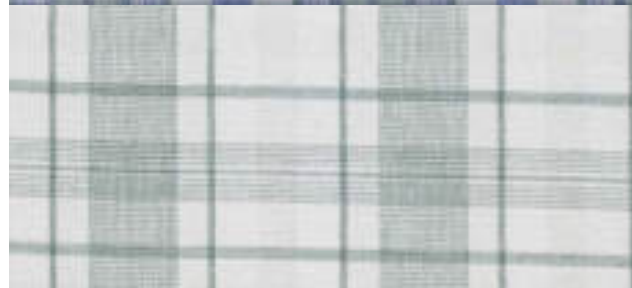


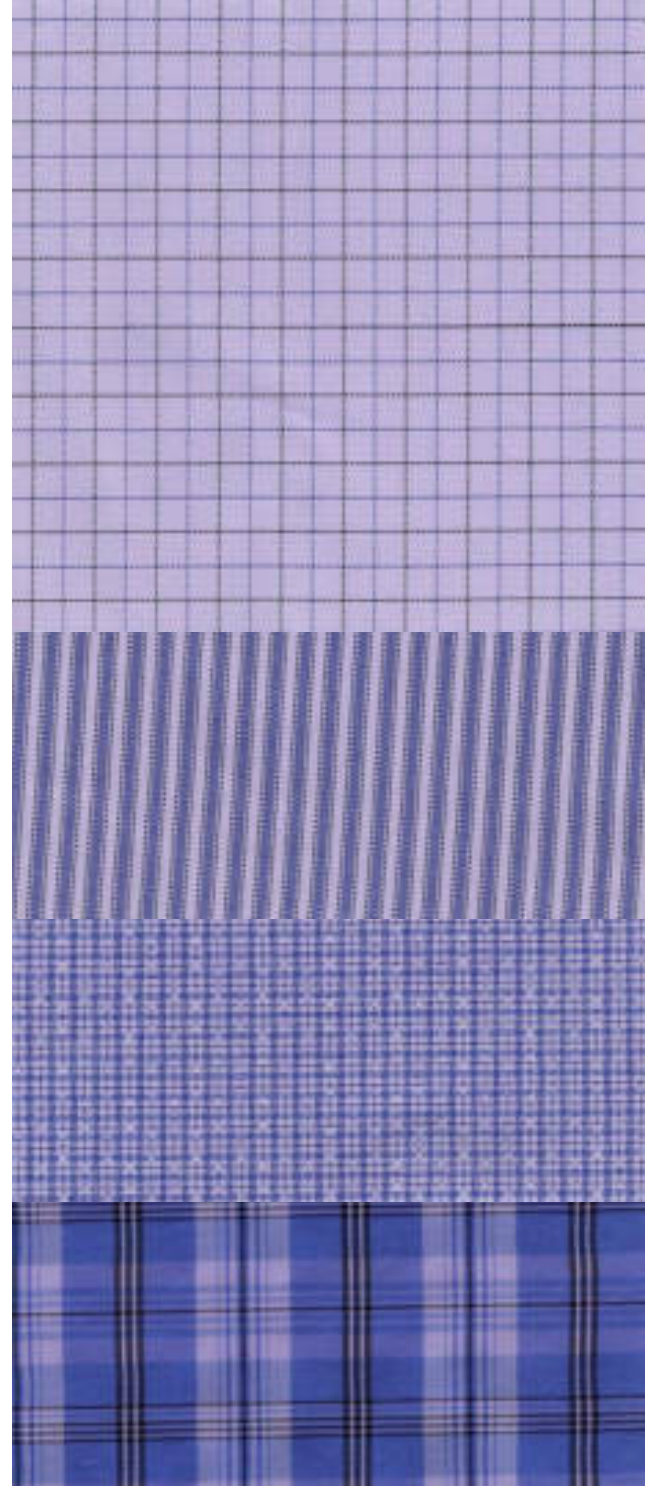
Micro
Chip
14-4105

J2982



-  Nylon
-  Cationic Polyester
-  Disperse Polyester





Coral Flight



Ketchup
18-1449



Chili
18-1448



Tigerlily
17-1456



Tawny
Orange
17-1341



Coral Pink
14-1318



Capri
Breeze
17-4735



Oil Blue
17-5111

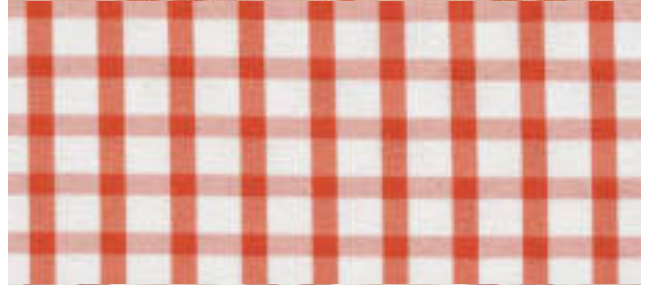


Pale Aqua
13-5305



Blanc de
Blanc
11-4800





BlueDunes



Blanc de
Blanc
11-4800



Purple
Heather
14-3911



Mars Red
18-1655



Nebulas
Blue
18-4048



Marlin
18-3932



Tigerlily
17-1456



Carrot
16-1361






Patriot
Blue
19-3925



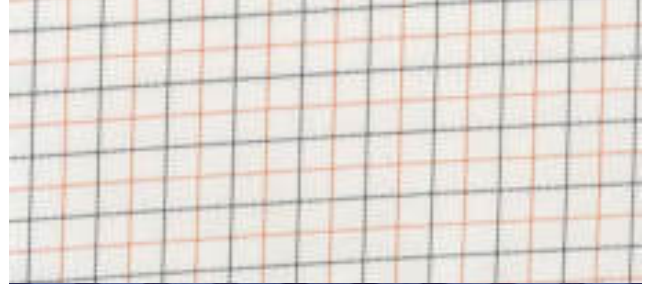
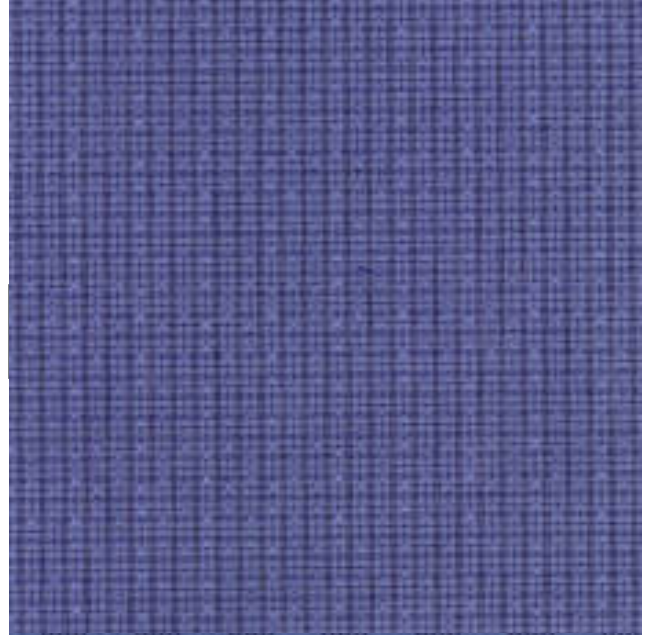
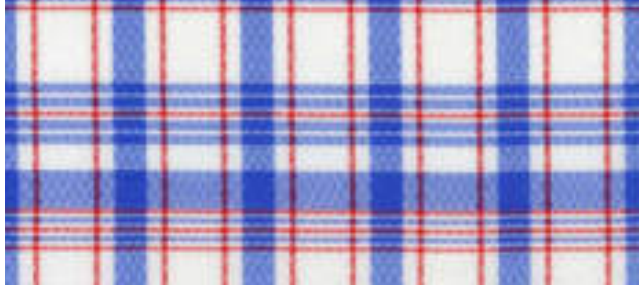
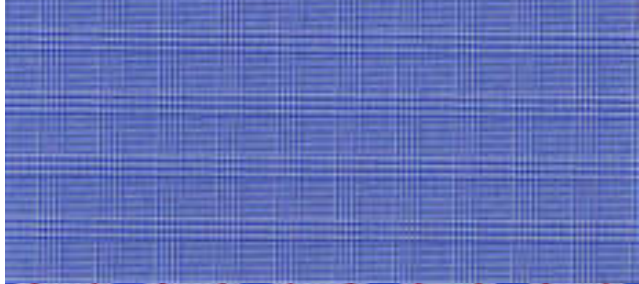
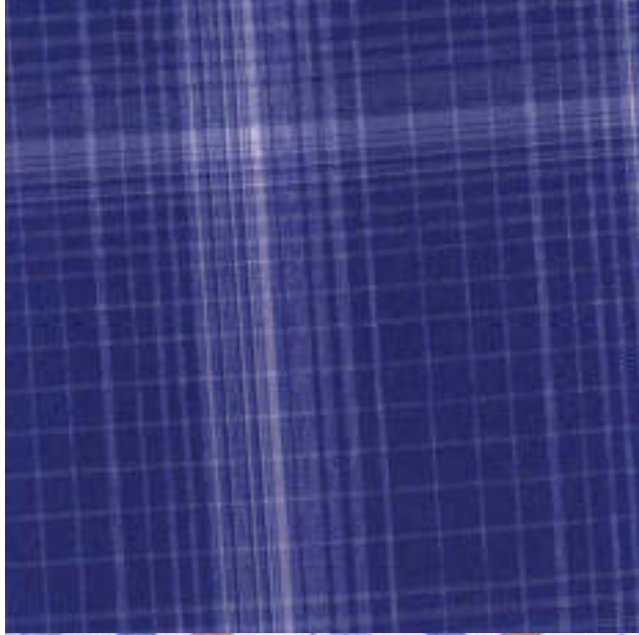
Colony Blue
17-3923

J3173



-  Nylon
-  Cationic Polyester
-  Disperse Polyester





Daisy Avenue



Navy
Blazer
19-3923



Frost Gray
17-0000



Micro
Chip
14-4105



Sulphur
14-0755



Lime Orbit



Turbulance
19-4215



Patriot
Blue
19-3925



Navy
Blazer
19-3923



Majolica
Blue
19-4125



Micro
Chip
14-4105



Dream
Blue
15-4005



Nebulas
Blue
18-4048



Lime Punch
13-0550



Sulphur
14-0755



Blanc de
Blanc
11-4800



Green Sails



Jazzy
18-1950



Foxglove
16-1710



Greenbriar
16-6127



Amazon
18-6024



Bright
White
11-0601



Blanc de
Blanc
11-4800

J2915

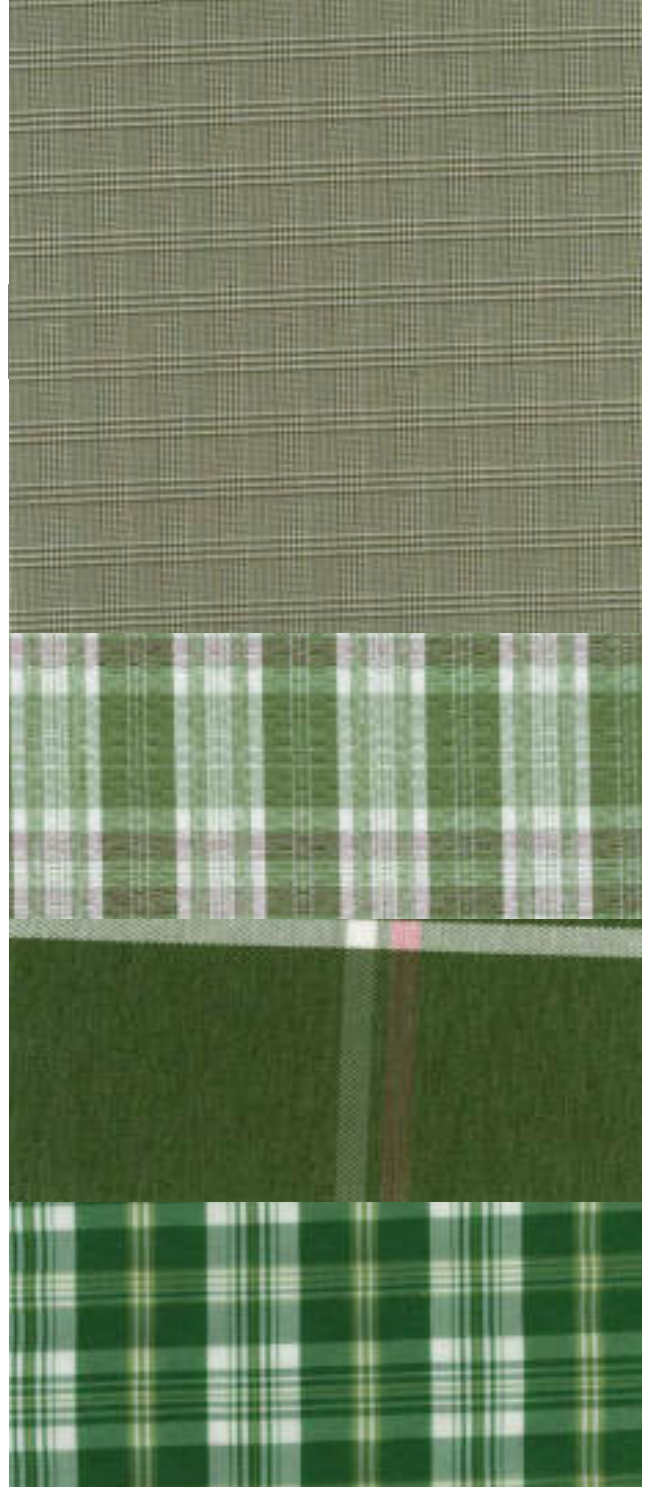
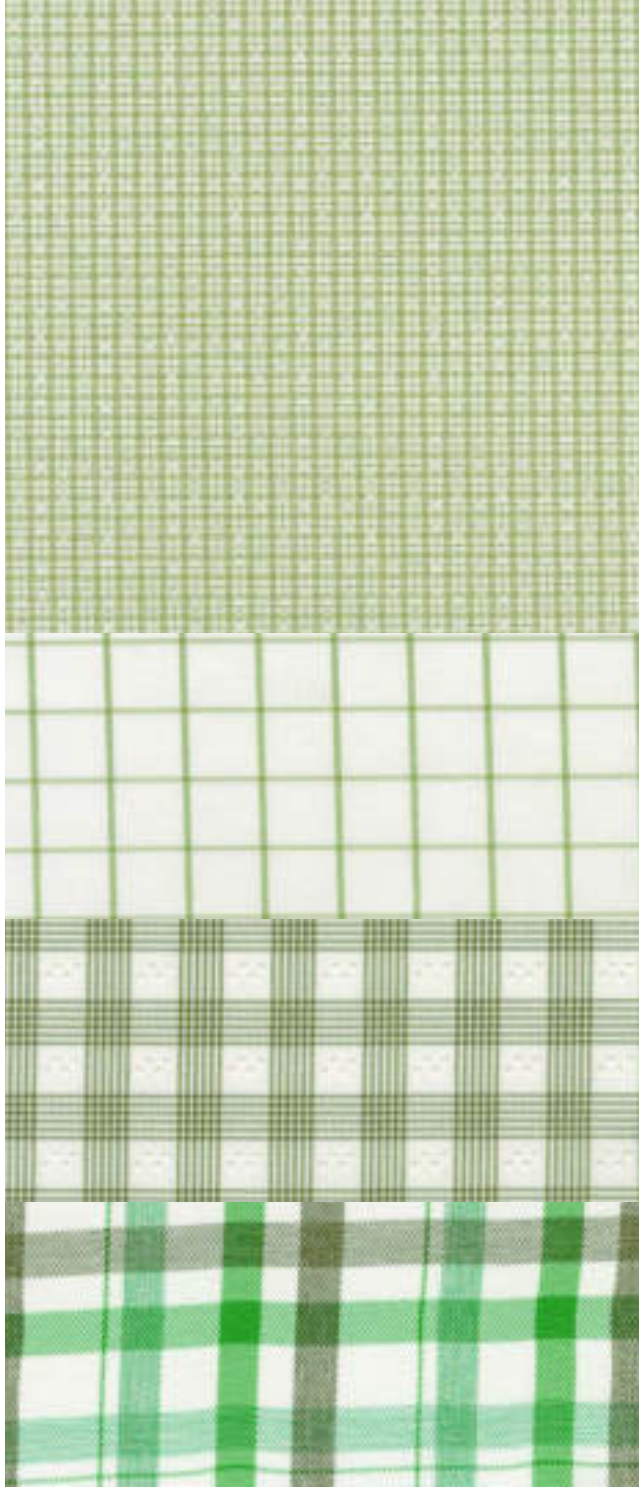
3=1

 Nylon

 Cationic Polyester

 Disperse Polyester





Aqua Depths



Stretch
Limo
19-4005



Turbulance
19-4215



Bayou
18-5121



Ocean
Depths
19-4535



Mediterranean
Blue
18-4334



Foxglove
16-1710



Turquoise
15-5519

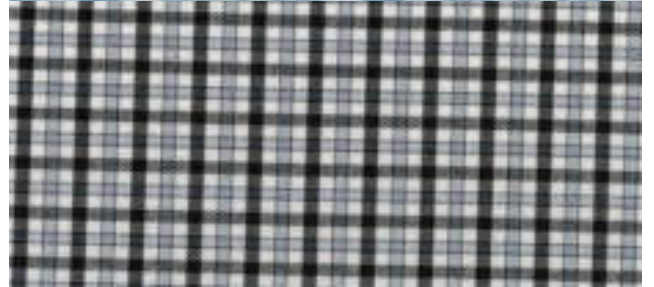
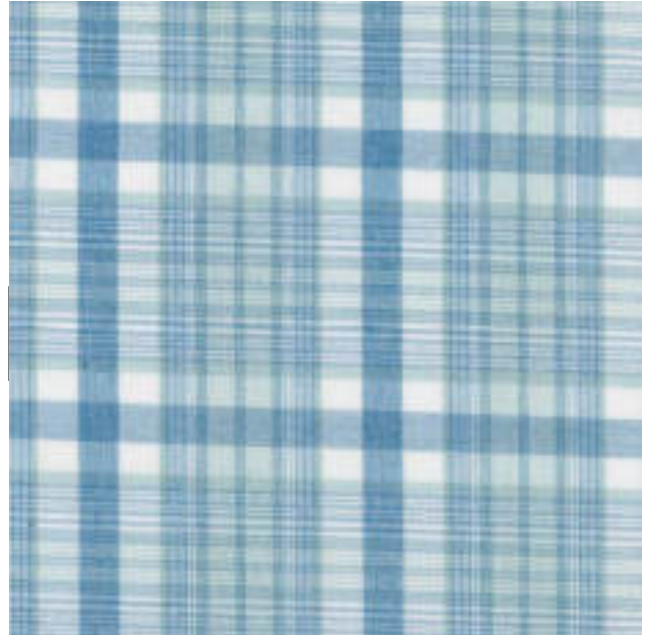


Aquarelle
15-4714



Blanc de
Blanc
11-4800





Dusty Ruins



Blue
Heaven
17-4023



Trooper
18-4510



Turbulance
19-4215



Chocolate
Torte
19-1109



Falcon
18-1304



Vetiver
17-0613



Silver
Cloud
15-4502



Military
Olive
19-0622

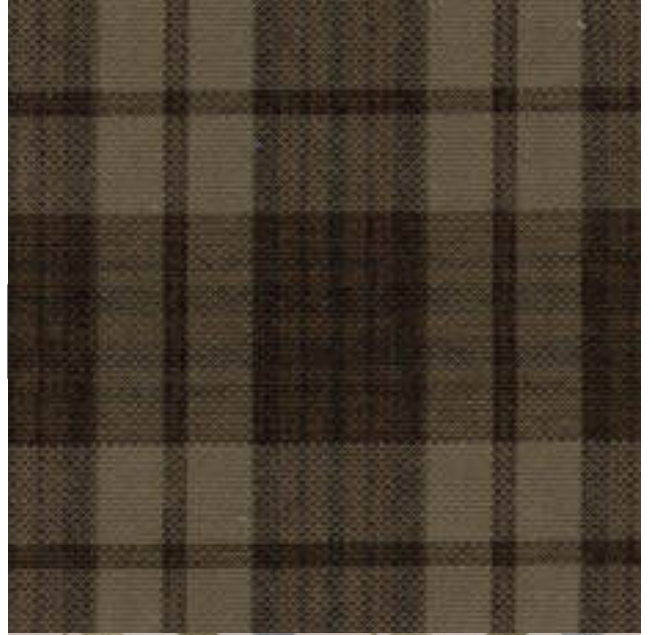
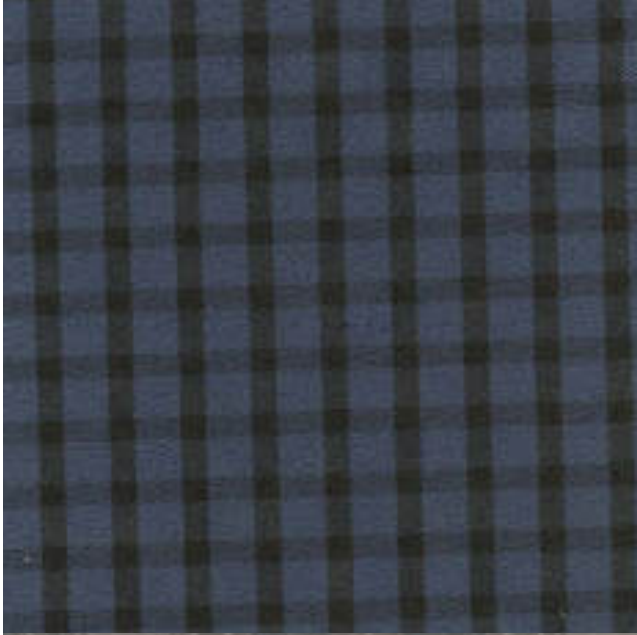


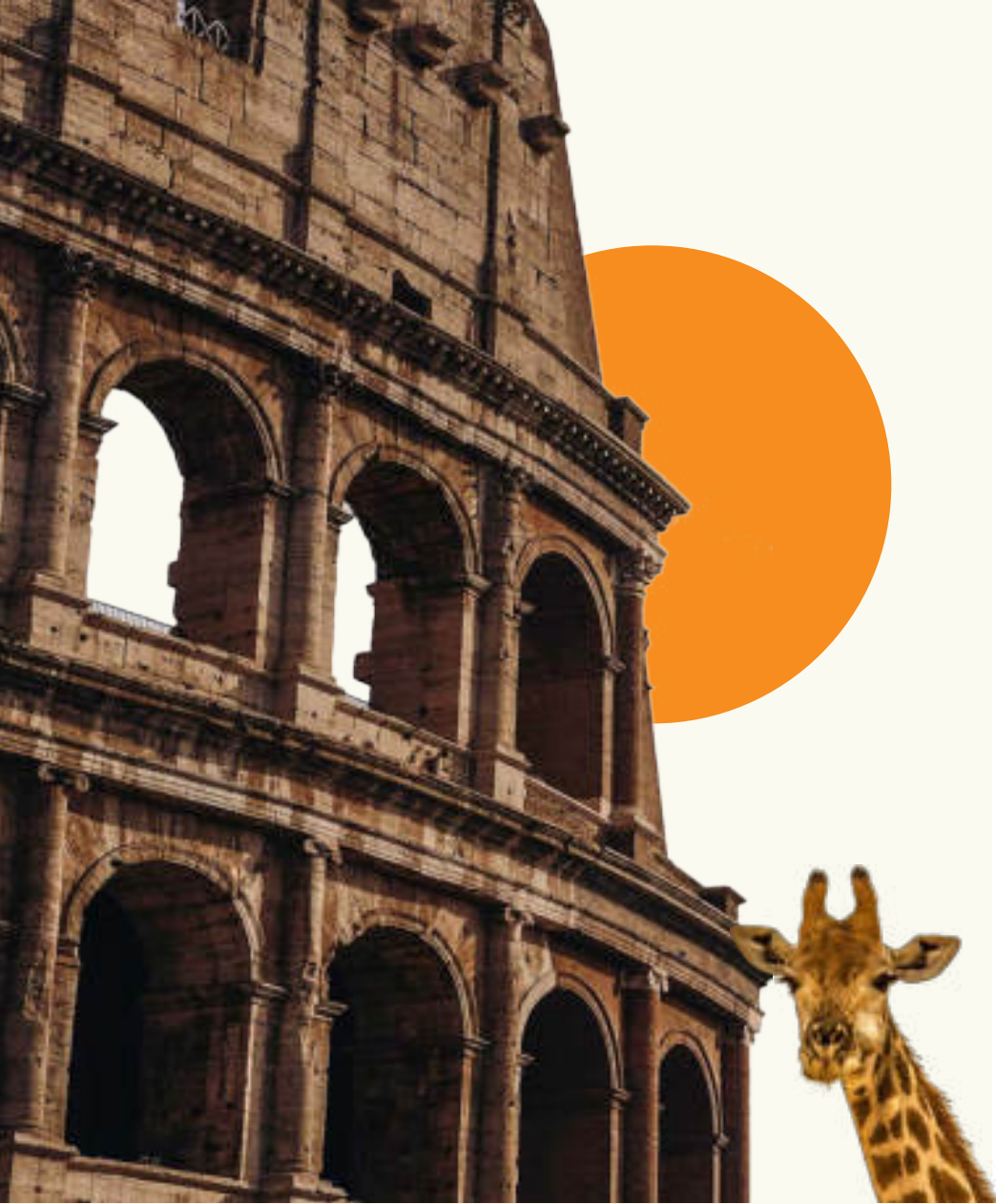
Dusty
Olive
18-0515



Deep Lichen
Green
18-0312







Ginger

Antiquity



Chocolate
Torte
19-1109



Dusty Olive
18-0515



Military Olive
19-0622



Pelican
14-6305



Silver
Cloud
15-4502



Blanc de
Blanc
11-4800



Tortoise
Shell
19-1241



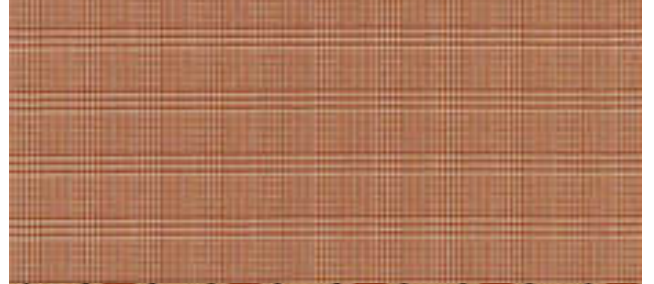
Glazed
Ginger
18-1154



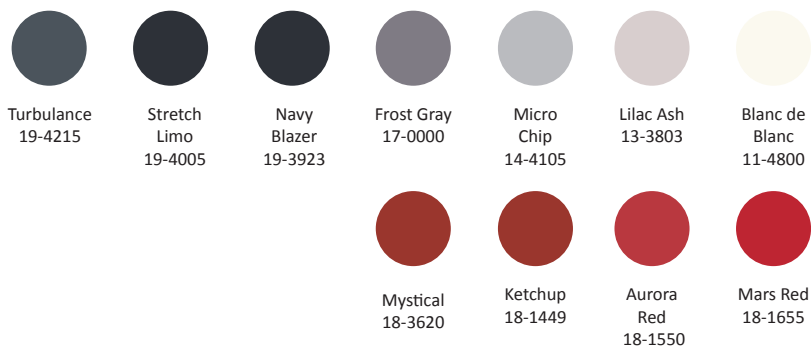
Bright
Marigold
15-1164



Oil Blue
17-5111






Red Heights



J3124



-  Nylon
-  Cationic Polyester
-  Disperse Polyester





GreyReflections



Navy Blazer
19-3923



Stretch Limo
19-4005



Turbulance
19-4215



Gray Pinstripe
19-0203



Castlerock
18-0201



Micro Chip
14-4105



Purple Heather
14-3911



Mallard Green
19-4818



Amazon
18-6024

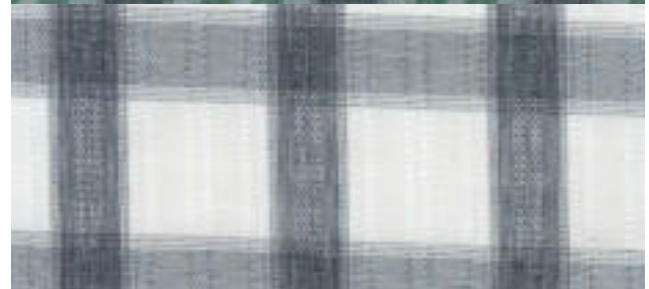
J3126



 Nylon

 Cationic Polyester

 Disperse Polyester







Jazzy Sands



Stretch
Limo
19-4005



Castlerock
18-0201



Patriot
Blue
19-3925



Navy
Blazer
19-3923



Bright
White
11-0601



Blanc de Blanc
11-4800



Fig
19-1718



Mars Red
18-1655



Jazzy
18-1950



Beetroot
Purple
18-2143



Foxglove
16-1710








Performance Apparel Fabrics

Burlington® offers a diverse range of top weight fabrics fitting every shirting need. Utilizing a combination of various weaves, weights, and performance finishes and stretch, these fabrics are made to work.



OUTDOOR ENTHUSIAST




Technology-driven fabrics geared for the outdoor adventurer who expects the ultimate, high-performance garment.

-  Soft laundered look
-  3=1 color options
-  Comfort stretch



SMARTERWEAR™

Transitional easy-care performance dressy-casual shirts for every-day wear.

-  Quick-dry
-  Bounce-back wrinkle resistance
-  Looks newer, longer

Matrixed Technologies

Create the ultimate high-performance garment with Burlington® Labs.

Fabric should work for you. Matrix multiple finish technologies for a durable, performance-packed garment providing optimized comfort levels.

Our proprietary finishing process yields a consistent and uniform application across the fabric for unprecedented durability and efficient performance.



INSECT REPELLENCY



NO FLY ZONE®

Insect repellent technology that works as an odorless contact insecticide and repellent. It is effective against mosquitos, ticks, ants, chiggers, flies and midges.



ANTIMICROBIAL



BIOGUARD®

Minimizes odor, provides hygienic freshness, maintains the ecological balance and prevents the deterioration and discoloration of fabrics.



MOISTURE CONTROL SYSTEM®



MCS® HYBRID COOL

Moisture Control System® that uses two cooling mechanisms to provide cooling with or without moisture, maintaining your body in a state of comfort.



MCS® BLOCKER

Moisture Control System® that absorbs, moves moisture away from the body and dries quickly while providing excellent UV protection.



MCS® ACTIVE COOLING

Moisture Control System® offering advanced cooling by moisture activation. Makes your sweat work for you.



MCS® SOIL RELEASE

Moisture Control System® that absorbs and moves moisture away from the body while allowing most ground in stains to be easily removed and preventing soil from re-depositing.



MCS® ADAPTIVE

Moisture Control System® that transports moisture depending on environmental conditions to cool you off or keep you warm.



MCS®

Moisture Control System® that absorbs and moves moisture away from the body and dries quickly.

Partner with us to build your recycled product collection.

Repurposing waste is our way to do our part to put the planet first.

We as individuals and as a company have a responsibility to be mindful of the impact we have on the environment. What goes around comes around and what was once new doesn't have to become waste.

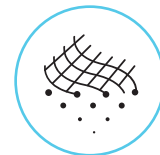
Create new meaning and purpose for old plastics with Restora™, our renewable fabric collection featuring recycled fibers from post-consumer plastics, used garments, and marine ocean waste.

Every new development for the Enthusiast has **30% or more recycled content**



Upstream solution for microfiber pollution.

- Enhanced biodegradation
- Microfiber pollution reduction
- Works with Nylon



SEAQUAL™

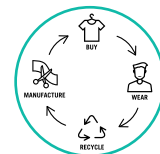
Recycled fabrics for a clean ocean.

- 100% recycled polyester yarn
- Made from post-consumer plastic bottles and plastic waste from the mediterranean sea
- 93%-95% recycled PET and 3%-7% ocean plastics



Recycled fibers from used polyester products.

- Closed-loop recycling system
- The process restores the polyester to its original quality and function



REP REVE™

Fibers made from recycled plastic waste.

- Made from pre-consumer fiber waste and post-consumer plastics
- High quality polyester and nylon fibers



Sustainability Culture

Pledging consistent, responsible practices.



Burlington embraces a Continuous Improvement culture centered around energy and water reduction and reuse.

We stand by our commitment

Sustainability and consistency in the manufacturing process and our commitment to the use of clean chemistry is fundamental to the way we do business.



Oeko-Tex Standard 100
Product Offerings



Higg Index 3.0
Completion



Bluesign® Certified
Fabrics



JBT is able to recycle 30-40% of its water demand

Continued efforts to reduce, reuse and recycle water and waste water across all platforms.



Energy Conservation

We continue efforts to reduce energy consumption on a per unit basis each year.



Corporate Office
Greensboro, NC, USA | T: 336 379 6220

burlingtonfabrics.com

an Elevate Textiles Company | © 2019 Burlington, LLC. All Rights Reserved. vSS19