

# HONMYUE

## ECO-FRIENDLY FABRIC

WEAVING A BETTER WORLD. TOGETHER.



# | ECO-FRIENDLY FABRIC

nüwa eco

- Core Values of nüwa eco
- NüCycle™ Nylon
- NüCycle™ Polyester
- NüSolution™



# Core Values of nüwa eco

# Core Values of nüwa eco

Honmyue is a fabric supplier based in Taiwan with **over five decades of experience.**

**bluesign® and GRS certified**

We aim to promote sustainability on all our products and processes.



**N**ever compromise on quality and functionality.



**U**sing recycled and harmless raw materials.



**W**ater and air pollution control.



**A**dvancing sustainable development.



**E**nsuring safe and healthy environment.



**C**ontinuous improvement in environmental performance.



**O**ptimizing ecological footprint.

# NüCycle™ Nylon

- Basic
- Dobby
- Cotton-like

# WHAT IS NüCycle™ Nylon ?



## GIVING POLYESTER NEW LIFE FROM DAILY TRASH.

NüCycle™ Nylon is made from **post-industrial waste**.

The waste material comes from industrial processes – scraps of material in factory (yarn factories or our weaving mills) that would have otherwise been landfilled.

## OUR PROCESS

### FROM WASTE TO YARN, FROM YARN TO FABRIC



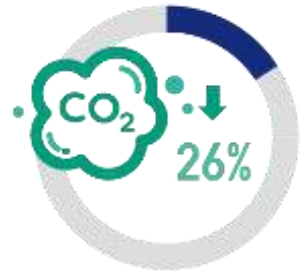
# WHAT IS NüCycle™ Nylon ?



## SUSTAINABLE ADVANTAGES



60% less energy than virgin nylon



26% less CO2 emission than virgin nylon

• Data based on the *Textile Exchange Material Snapshots*.

## AVAILABLE SPEC & STYLE

### Yarn Spec

- Filament: 20D, 30D, 40D, 70D, 210D, 420D, 840D, 1260D, 1680D
- Available in FDY, DTY, ATY & Solution Dyed

### Fabric Style

- Plain, Twill, Dobby, Ripstop, Honeycomb, Diamond, Two-tone, Heather, etc.

## END USE



Industrial



Backpack



Outdoors



Apparel

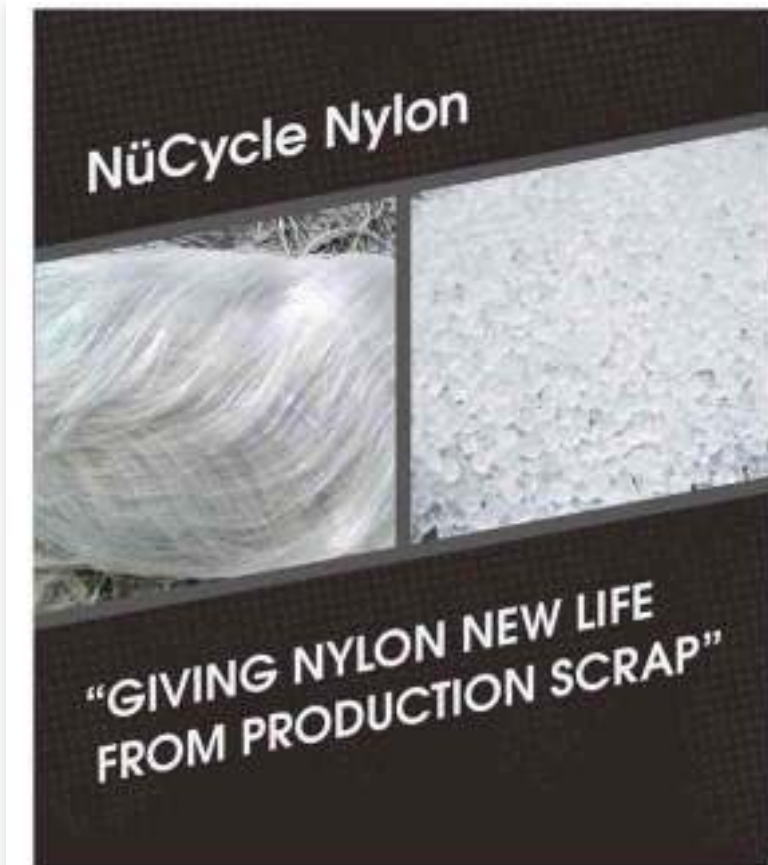


Footwear



Automotive

# NüCycle™ Nylon Basic



## Feature

- Plain is the simplest of all weaves but the visual effect may be varied, using one colored warps and multicolored wefts, gives regular and stand out dots pattern on the surface.
- 1/1 plain weave fabric is very sturdy and reliable because they interlacing are more frequent than for any other weave.

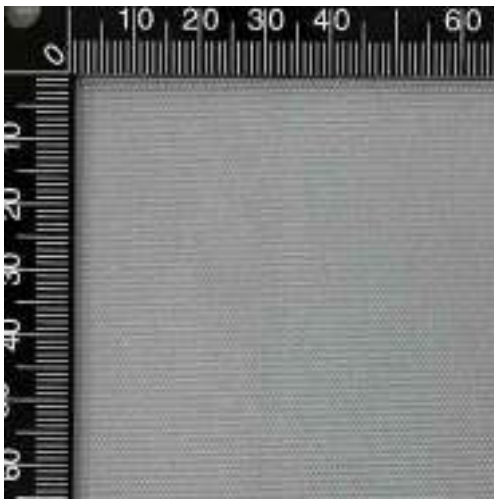
## Target application

- Trekking Bags
- Hiking Bags
- Running Bags
- Bike Packs
- Climbing Packs

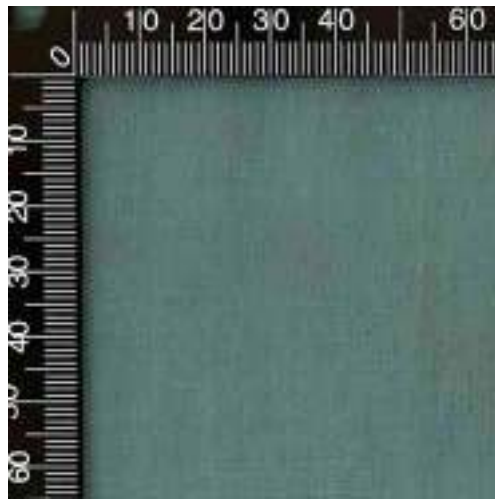
## Reference price

- US\$ 2.9 ~ 4.1 / yd

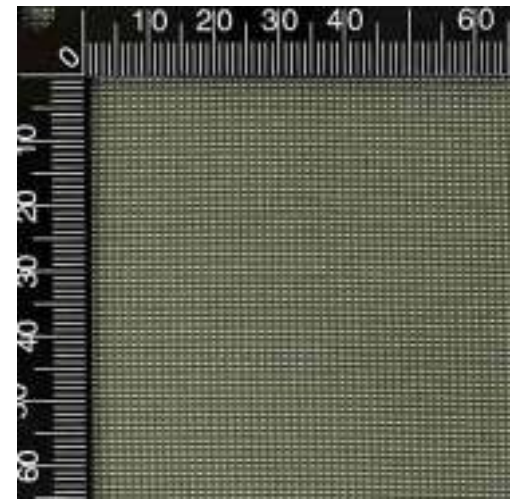




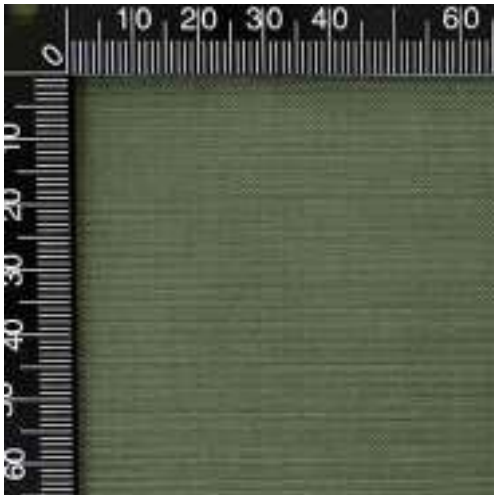
Design No: **N1006**  
Content: 100% Re-Nylon  
Description: N400D\*N400D  
Finishing: PD+C0 WR+PU930mm  
Remark: NE-13



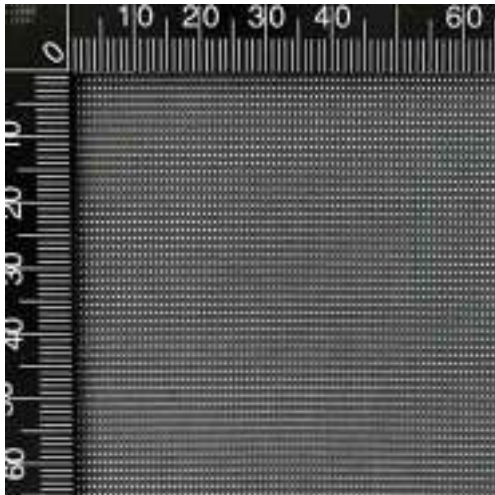
Design No: **N0978**  
Content: 100% Re-Nylon  
Description: N200D\*N200D  
Finishing: PD+C0 WR+PU1500mm  
Remark: NE-13



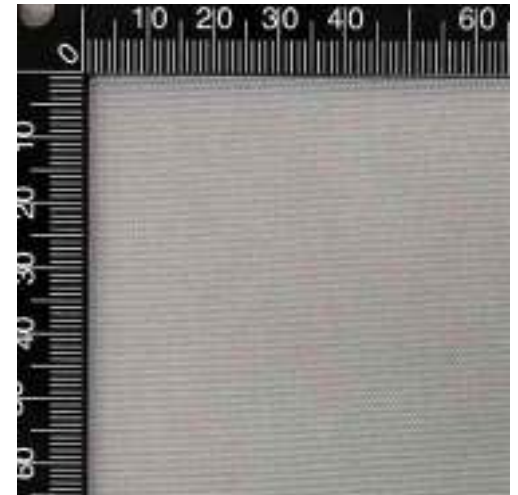
Design No: **M0645**  
Content: 71% Re-Nylon, 29% Re-Polyester  
Description: N200D\*(N200D+T300D)  
Finishing: PD+C0 WR+PU1500mm  
Remark: NE-13



Design No: **N0976**  
Content: 100% Re-Nylon  
Description: N200D\*N400D  
Finishing: PD+C0 WR+PU1500mm  
Remark: NE-13



Design No: **M0642**  
Content: 82% Re-Nylon, 18% Re-Polyester  
Description: N400D\*(N400D+T300D)  
Finishing: PD+C0 WR+PU1000mm  
Remark: NE-13



Design No: **N0982**  
Content: 100% Re-Nylon  
Description: N400D\*N400D  
Finishing: PD+C0 WR+PU\*2  
Remark: NE-13

# NüCycle™ Nylon Dobby



## Feature

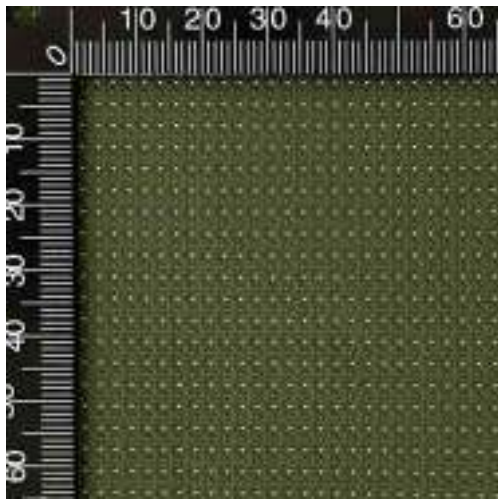
- Dobby weaves often comprise several different thicknesses of yarn and weave techniques, to create fancy and distinctive effect.
- Ripstop fabrics uses a special reinforcing technique to make it tear and ripping resistant.

## Target application

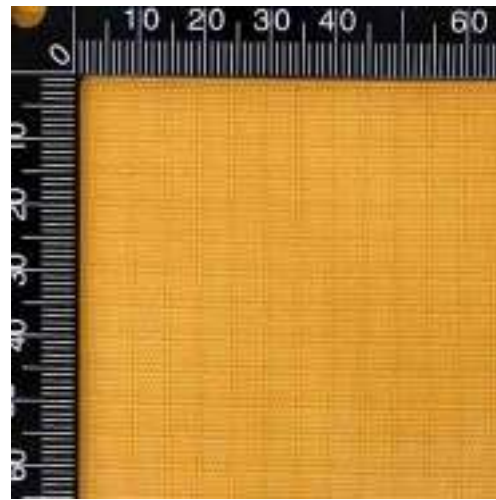
- Trekking Bags
- Hiking Bags
- Running Bags
- Bike Packs
- Climbing Packs
- Lifestyle Bags

## Reference price

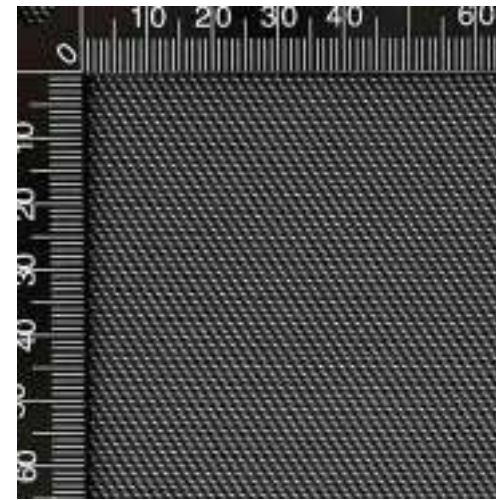
- US\$ 3.1 ~ 4.2 / yd



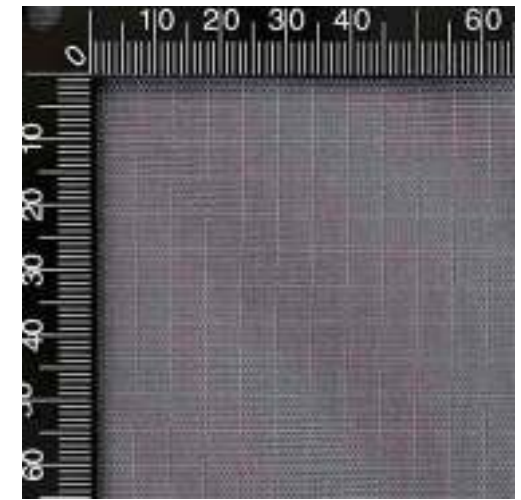
Design No: **M0646**  
Content: 94% Re-Nylon, 6% Re-Polyester  
Description: N400D\*(N400D+T300D)  
Finishing: PD+C0 WR+PU\*2  
Remark: NE-15



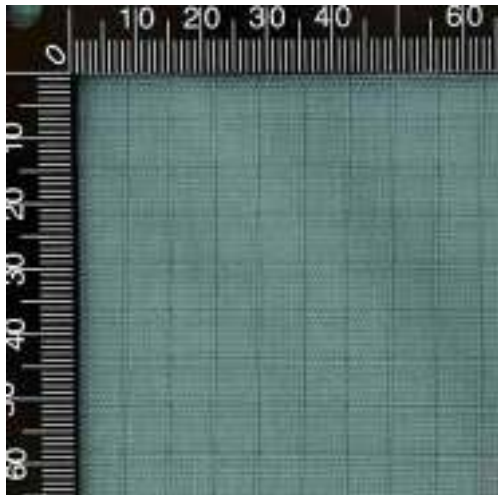
Design No: **N0992**  
Content: 100% Re-Nylon  
Description: N400D\*N400D  
Finishing: PD+C0 WR+PU750mm  
Remark: NE-14



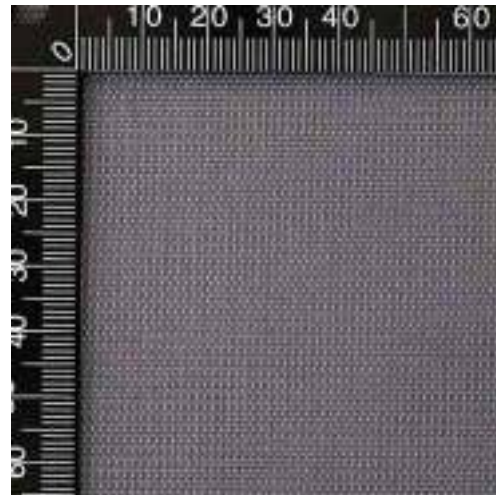
Design No: **M0648**  
Content: 55% Re-Nylon, 45% Re-Polyester  
Description: N400D\*(T600D+T150D)  
Finishing: PD+C0 WR+PU800mm  
Remark: NE-15



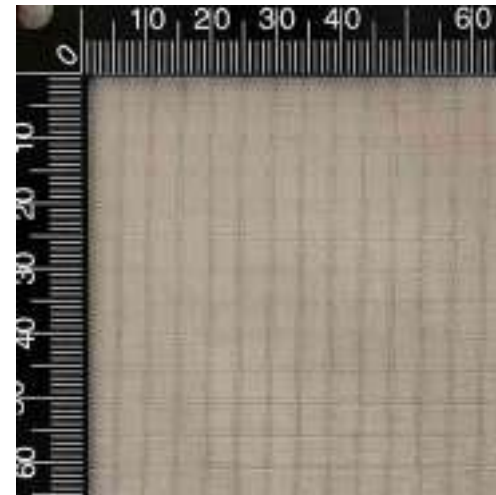
Design No: **N0942**  
Content: 100% Re-Nylon  
Description: N400D\*N400D  
Finishing: PD+C0 WR+PU1500mm  
Remark: NE-14



Design No: **N0991**  
Content: 100% Re-Nylon  
Description: N400D\*N400D  
Finishing: PD+C0 WR+PU\*2  
Remark: NE-14



Design No: **N0946**  
Content: 100% Re-Nylon  
Description: N400D\*N400D  
Finishing: PD+C0 WR+PU1500mm  
Remark: NE-15



Design No: **N0986**  
Content: 100% Re-Nylon  
Description: N200D\*N200D  
Finishing: PD+C0 WR+PU650mm  
Remark: NE-14



Design No: **N0997**  
Content: 100% Re-Nylon  
Description: N400D\*N400D  
Finishing: PD+C0 WR+PU600mm  
Remark: NE-15

# NüCycle™ Nylon Cotton-like



## Feature

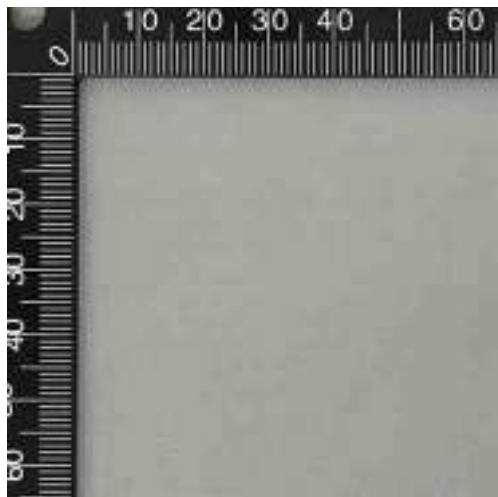
- These fabrics are similar to natural cotton products in look and handfeel. What's more, it's made with 100% Recycled Nylon.
- In addition to abrasion resistance, it features soft texture & easy care, applied to apparel and daily bag.

## Target application

- Daily Bags
- Fashion Bags
- Lifestyle Bags
- Duffel Bags
- Luggage
- Baby Stroller
- Travel Equipment

## Reference price

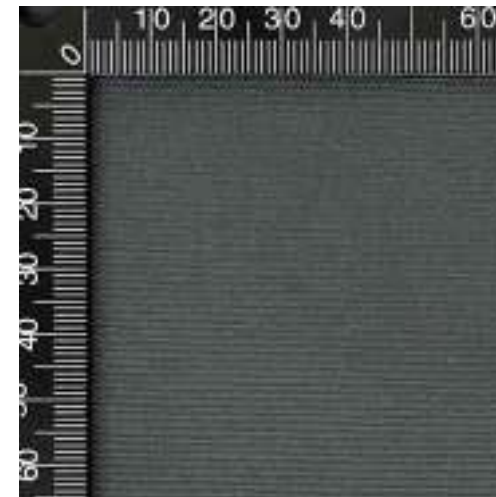
- US\$ 3.4 ~ 4.7 / yd



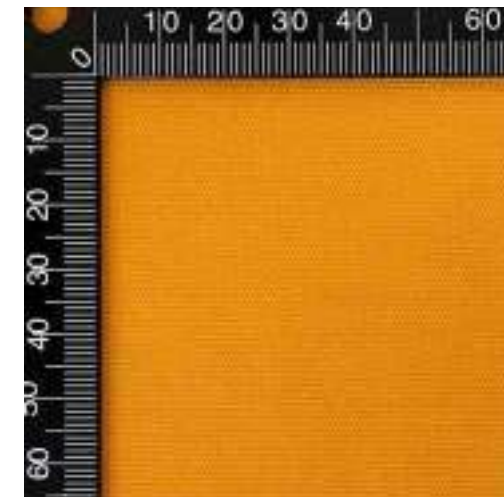
Design No: **N1001**  
Content: 100% Re-Nylon  
Description: N70D\*N160D  
Finishing: PD+C0 WR+PU1500mm  
Remark: NE-16



Design No: **N1002**  
Content: 100% Re-Nylon  
Description: N200D\*N320D  
Finishing: PD+C0 WR+PU1500mm  
Remark: NE-16



Design No: **N0999**  
Content: 100% Re-Nylon  
Description: N200D\*N640D  
Finishing: PD+C0 WR+PU1500mm  
Remark: NE-16



Design No: **N1005**  
Content: 100% Re-Nylon  
Description: N400D\*N640D  
Finishing: PD+C0 WR+PU600mm  
Remark: NE-16



# NüCycle™ Polyester

- Basic
- Dobby
- Mélange

# WHAT IS NüCycle™ Polyester ?



## GIVING POLYESTER NEW LIFE FROM DAILY TRASH.

NüCycle™ Polyester is made from **post-consumer waste**.

The waste material comes from used plastic bottles, keeping plastics from going to landfill and ocean.

## OUR PROCESS

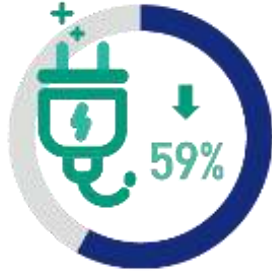
### FROM TRASH TO YARN, FROM YARN TO FABRIC



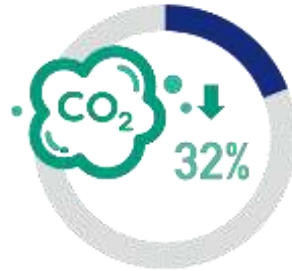
# WHAT IS NüCycle™ Polyester ?



## SUSTAINABLE ADVANTAGES



59% less energy than virgin polyester



32% less CO2 emission than virgin polyester

• Data based on the *Textile Exchange Material Snapshots*.

## AVAILABLE SPEC & STYLE

### Yarn Spec

- Filament: 30D, 75D, 150D, 300D, 600D, 900D, 1200D, 1800D
- Staple: T10's, T12's, T20's, T30's, T40's
- Available in FDY, DTY, ATY & Solution Dyed

### Fabric Style

- Plain, Twill, Dobby, Ripstop, Honeycomb, Diamond, Two-tone, Heather, etc.

## END USE



Industrial



Backpack



Outdoors



Apparel



Footwear



Automotive



Furnishings



Window Covering



# NüCycle™ Polyester Basic



## Feature

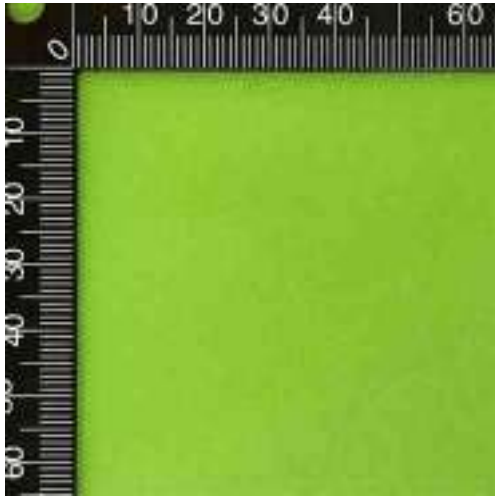
- Recycling PET to create the fabrics prevents it from going to landfill and ocean.
- 100% recycled polyester plain fabric from 75D to 600D, and adding a PFC-free DWR coating make it more environmentally friendly.

## Target application

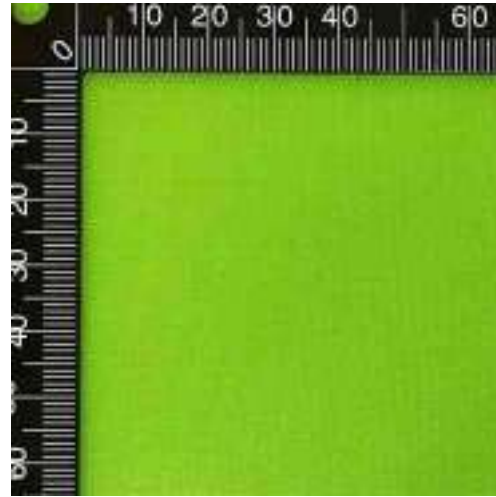
- Trekking Bags
- Hiking Bags
- Running Bags
- Bike Packs
- Climbing Packs

## Reference price

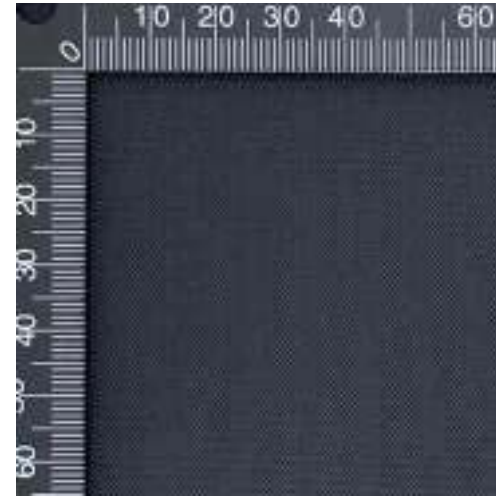
- US\$ 1.9 ~ 2.6 / yd



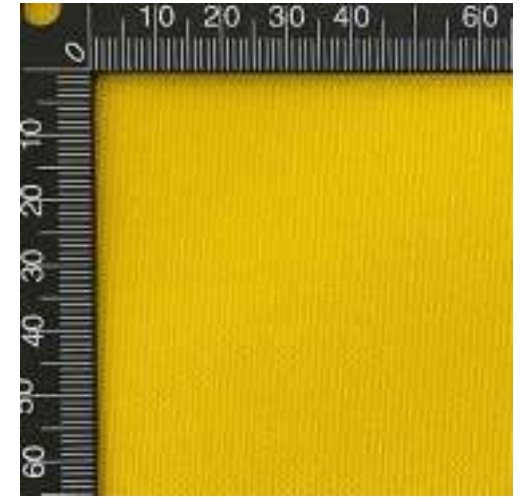
Design No: **P1230**  
Content: 100% Re-Polyester  
Description: T75D\*T75D  
Finishing: PD+CO WR+PU1800mm  
Remark: NE-01



Design No: **P1235**  
Content: 100% Re-Polyester  
Description: T150D\*T150D  
Finishing: PD+CO WR+PU1800mm  
Remark: NE-01



Design No: **P1240**  
Content: 100% Re-Polyester  
Description: T300D\*T300D  
Finishing: PD+CO WR+PU1800mm  
Remark: NE-01



Design No: **P1241**  
Content: 100% Re-Polyester  
Description: T600D\*T600D  
Finishing: PD+CO WR+PU1300mm  
Remark: NE-01



# NüCycle™ Polyester Dobby



## Feature

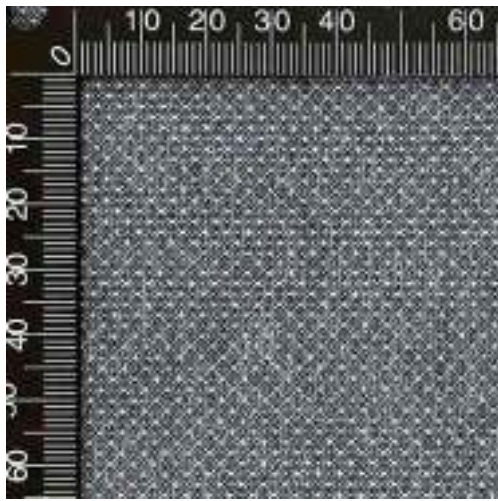
- Mainly with 300D/600D recycled polyester. The denier which stands at the best balance for application and cost.
- The delicate structure which brings the sense of fashion and urban as well.

## Target application

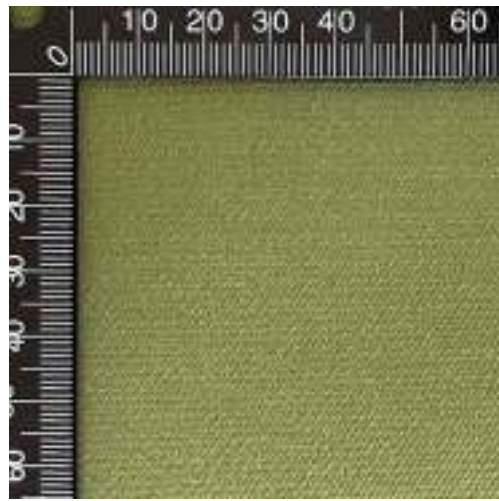
- Daily Bags
- Fashion Bags
- Lifestyle Bags
- Duffel Bags
- Luggage
- Baby Stroller
- Travel Equipment

## Reference price

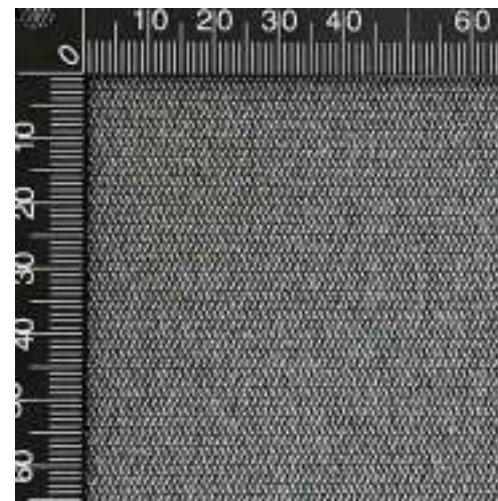
- US\$ 2.6 ~ 4.5 / yd



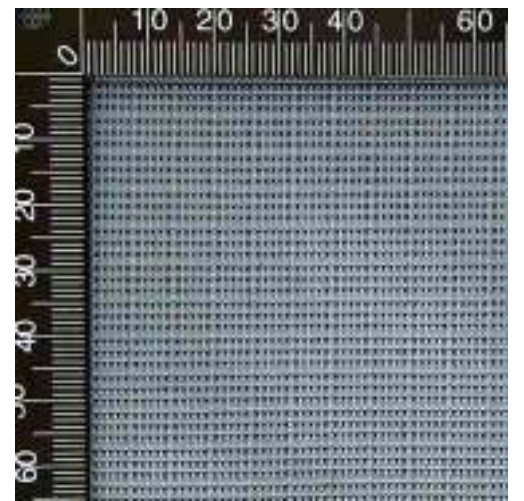
Design No: **P1416-1**  
Content: 100% Re-Polyester  
Description: T600D\*T600D  
Finishing: PD+CO WR+PU1000mm  
Remark: NE-07



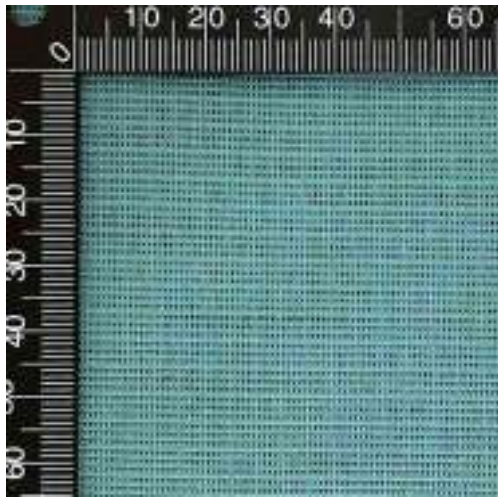
Design No: **P1579**  
Content: 100% Re-Polyester  
Description: T300D\*T300D  
Finishing: PD+CO WR+PU\*2  
Remark: NE-17



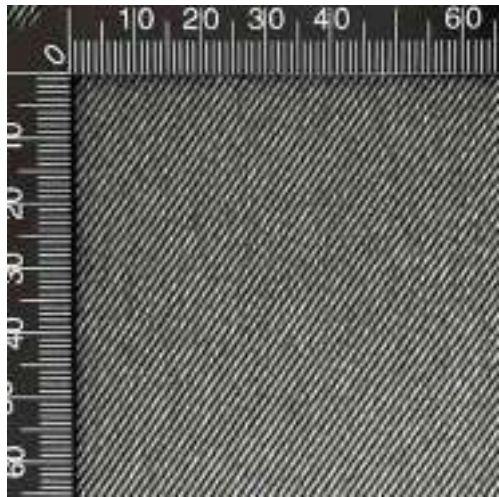
Design No: **P1410**  
Content: 100% Re-Polyester  
Description: T300D\*T300D  
Finishing: PD+CO WR+PU1500mm  
Remark: NE-05



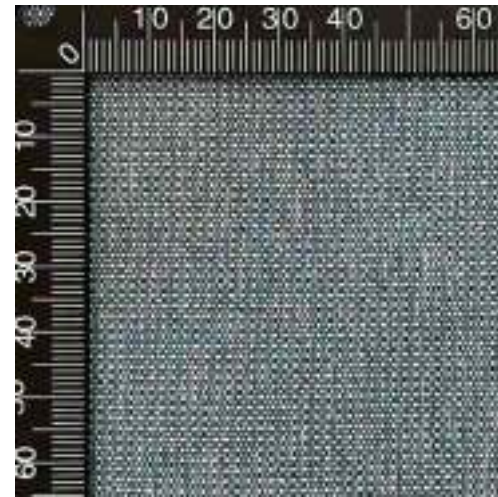
Design No: **P1400**  
Content: 100% Re-Polyester  
Description: T300D\*T300D  
Finishing: PD+CO WR+PU1000mm  
Remark: NE-06



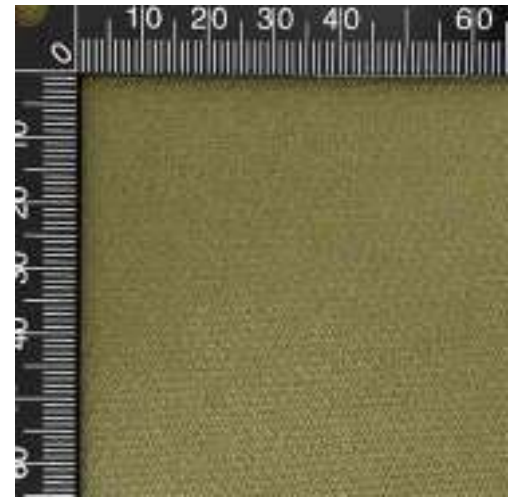
Design No: **P1339**  
Content: 100% Re-Polyester  
Description: T300D\*T300D  
Finishing: PD+CO WR+PU1500mm  
Remark: NE-06



Design No: **P1474**  
Content: 100% Re-Polyester  
Description: T300D\*T600D  
Finishing: PD+CO WR+PU1500mm  
Remark: NE-08



Design No: **P1409-1**  
Content: 100% Re-Polyester  
Description: T300D\*T300D  
Finishing: PD+CO WR+PU1500mm  
Remark: NE-07



Design No: **P1578**  
Content: 100% Re-Polyester  
Description: T300D\*T300D  
Finishing: PD+CO WR+PU\*2  
Remark: NE-17

# NüCycle™ Polyester Mélange



## Feature

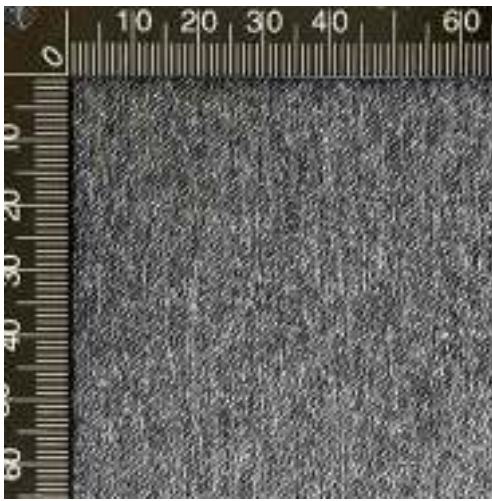
- 100% recycled polyester mélange fabric creating a unique mixed color effect and soft feel, and the wide range of color tones makes it much popular and rich in look.
- The fabric has strong green profile and excellent wear resistance.

## Target application

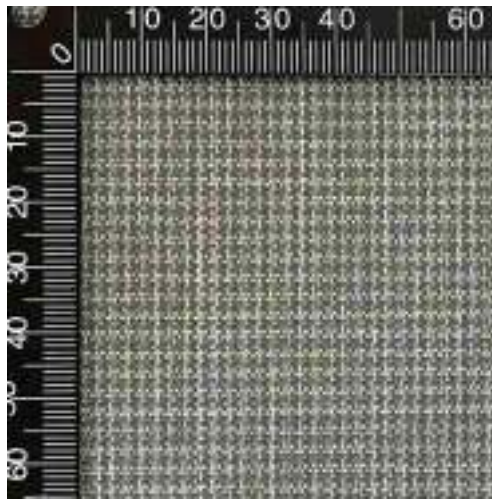
- Daily Bags
- Fashion Bags
- Lifestyle Bags
- Duffel Bags
- Luggage
- Baby Stroller
- Travel Equipment

## Reference price

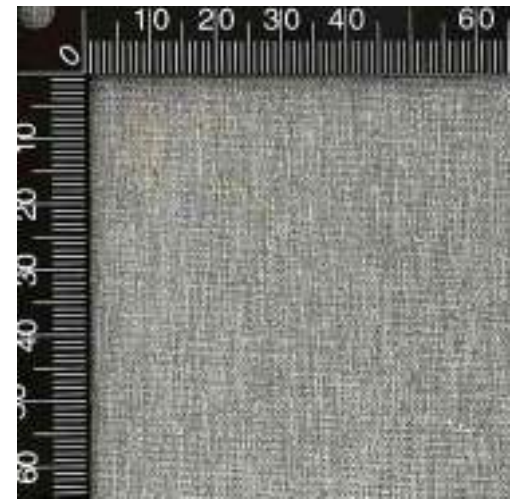
- US\$ 3.0 ~ 4.7 / yd



Design No: **P1469**  
Content: 100% Re-Polyester  
Description: T300D\*T600D  
Finishing: PD+C0 WR+PU1500mm  
Remark: NE-08



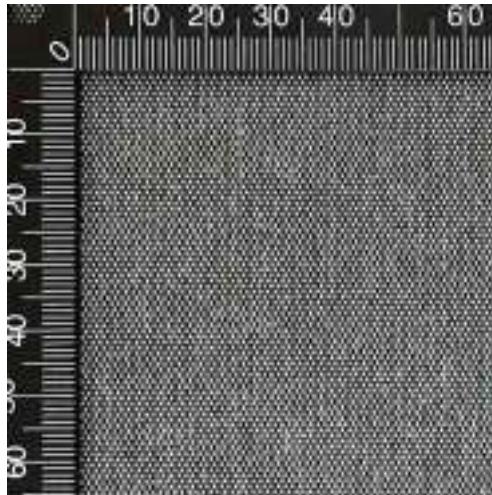
Design No: **P1283-1**  
Content: 100% Re-Polyester  
Description: T600D\*T600D  
Finishing: PD+C0 WR+PU1700mm  
Remark: NE-02



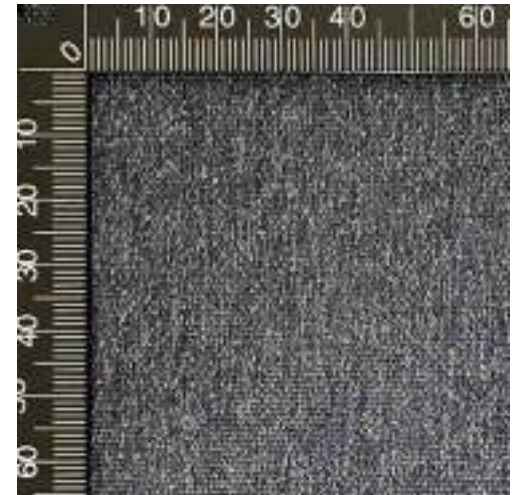
Design No: **P1294-1**  
Content: 100% Re-Polyester  
Description: T300D\*T300D  
Finishing: PD+C0 WR+PU1800mm  
Remark: NE-02



Design No: **P1411**  
Content: 100% Re-Polyester  
Description: T600D\*T600D  
Finishing: PD+WR+PU1400mm  
Remark: NE-05



Design No: **P1412**  
Content: 100% Re-Polyester  
Description: T600D\*T600D  
Finishing: PD+WR+PU1400mm  
Remark: NE-05



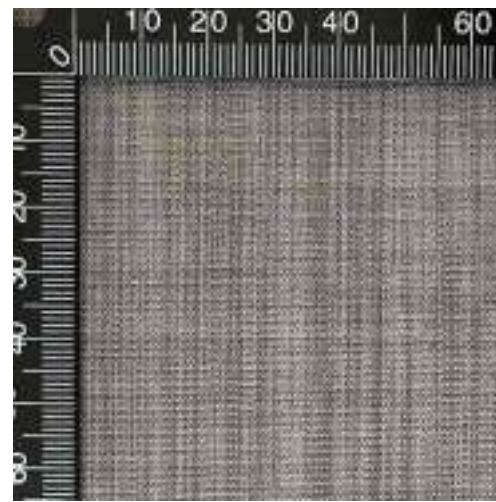
Design No: **P1475**  
Content: 100% Re-Polyester  
Description: T300D\*T300D  
Finishing: PD+C0 WR+PU1500mm  
Remark: NE-08



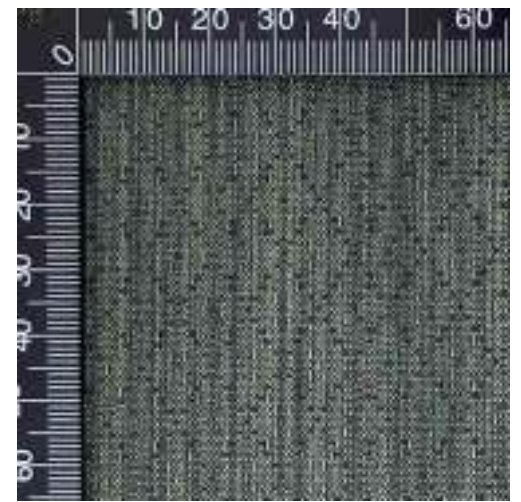
Design No: **P1614**  
Content: 100% Re-Polyester  
Description: T600D\*T600D  
Finishing: PD+C0 WR+PU1000mm  
Remark: NE-19



Design No: **P1594**  
Content: 100% Re-Polyester  
Description: T300D\*T300D  
Finishing: PD+C0 WR+PU\*2  
Remark: NE-18



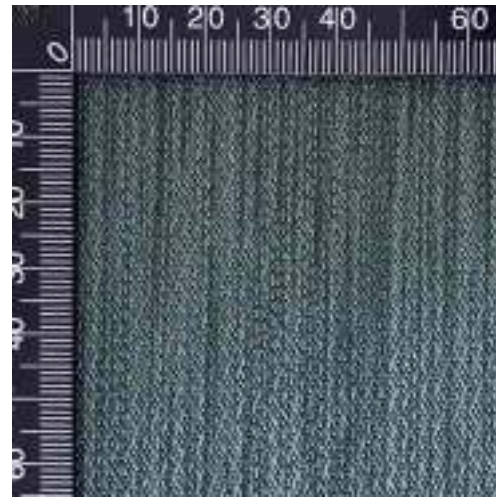
Design No: **P1601**  
Content: 100% Re-Polyester  
Description: T300D\*T300D  
Finishing: PD+C0 WR+PU1500mm  
Remark: NE-19



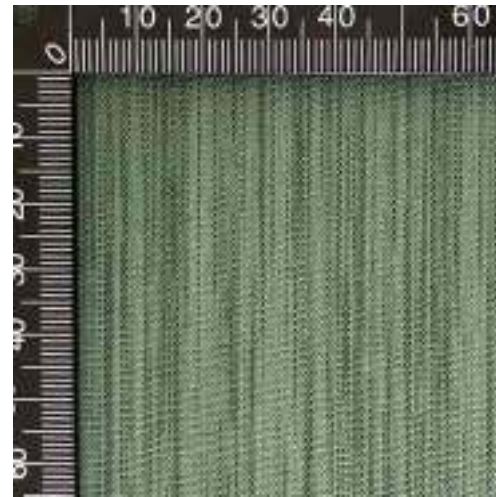
Design No: **P1597**  
Content: 100% Re-Polyester  
Description: T300D\*T300D  
Finishing: PD+C0 WR+PU1000mm  
Remark: NE-18



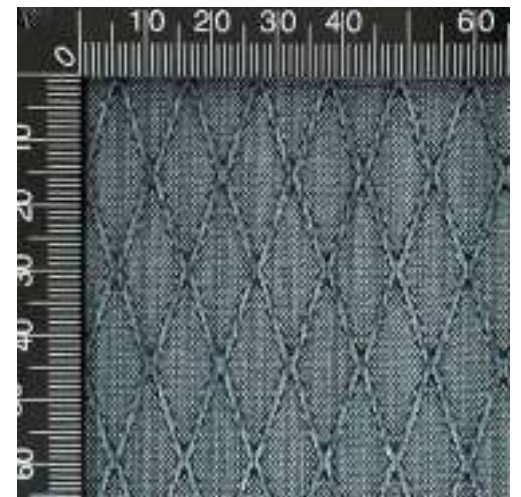
Design No: **P1590**  
Content: 100% Re-Polyester  
Description: T300D\*T300D  
Finishing: PD+C0 WR+PU1500mm  
Remark: NE-18



Design No: **P1615**  
Content: 100% Re-Polyester  
Description: T300D\*T600D  
Finishing: PD+C0 WR+PU1500mm  
Remark: NE-19



Design No: **P1606**  
Content: 100% Re-Polyester  
Description: T300D\*T300D  
Finishing: PD+C0 WR+PU1500mm  
Remark: NE-19



Design No: **P1598**  
Content: 100% Re-Polyester  
Description: T300D\*T300D  
Finishing: PD+C0 WR+PU\*2  
Remark: NE-18

# NüSolution™

- Basic
- Light
- Texture



# WHAT IS NüSolution™ ?

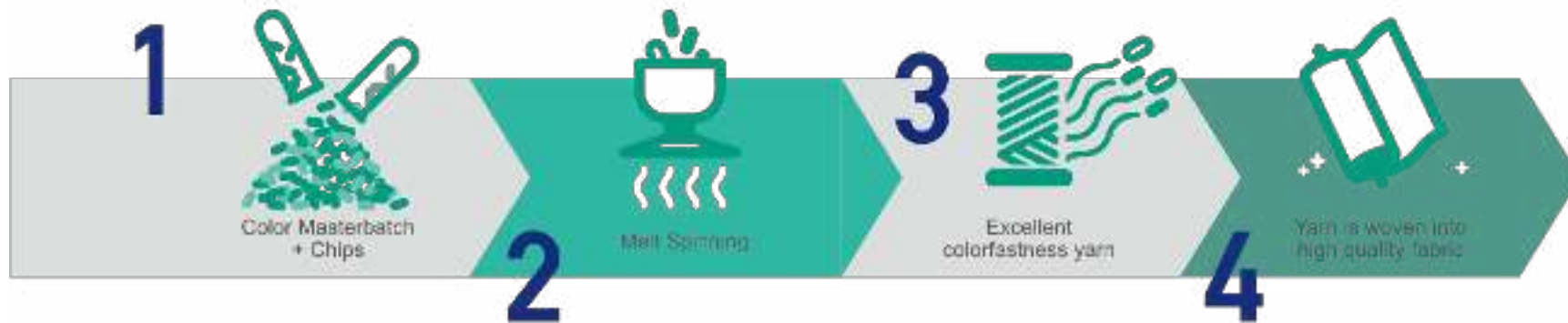


OUR SOLUTION TO KEEP THE EARTH SUSTAINABLE.  
SAVE WATER. SAVE ENERGY. LESS POLLUTION.

NüSolution™ have colors added at the very start – pigment is mixed with nylon or polyester pellets prior to spinning into yarn, that **eliminates the need for baths of dye** – slashing water consumption, one of the fabric industry’s most wasteful resources.

## OUR PROCESS

NO WATER IN DYEING, EVEN LESS CHEMICAL IN SPINNING



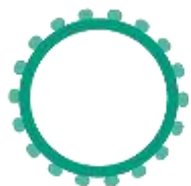
# WHAT IS NüSolution™ ?



## EXCELLENT COLORFASTNESS

NüSolution™ is in line with the concept of “**design for environment**”. Delivering color reproducibility and uniformity.

### Post Dyed Fiber



Color is outside on the surface of the yarn.

VS

### Solution Dyed Fiber



Color is inside evenly dispersed throughout the entire yarn.

Color Fastness to Washing	Color Fastness to Water	Color Fastness to Perspiration	Color Fastness to Rubbing	Color Fastness to Light
AATCC 61	AATCC 107	AATCC 15	AATCC 8	AATCC 16
2A 49°C	18hrs at 37°C	6hrs 37°C	Dry & Wet	Option 3
<b>4</b>	<b>4</b>	<b>4</b>	<b>4</b>	<b>4</b>

## SUSTAINABLE ADVANTAGES



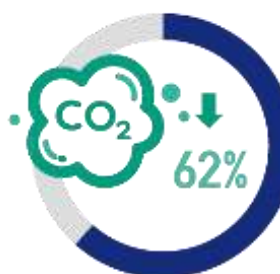
89% less water than conventional dye fabric



63% less chemical than conventional dye fabric



63% less energy than conventional dye fabric



62% less CO2 emission than conventional dye fabric

# WHAT IS NüSolution™ ?



## AVAILABLE SPEC & STYLE

### Yarn Spec

- Nylon: 20D, 30D, 40D, 70D, 210D, 420D, 840D, 1260D, 1680D
- Polyester: 30D, 75D, 150D, 300D, 600D, 900D, 1200D, 1800D
- Available in FDY, DTY, ATY & Recycled

### Fabric Style

- Plain, Twill, Dobby, Ripstop, Honeycomb, Diamond, Two-tone, Heather, etc.

## END USE



Industrial



Backpack



Outdoors



Apparel



Footwear



Furnishings



Window Covering



Outdoor Furnishings

# NüSolution™ Basic

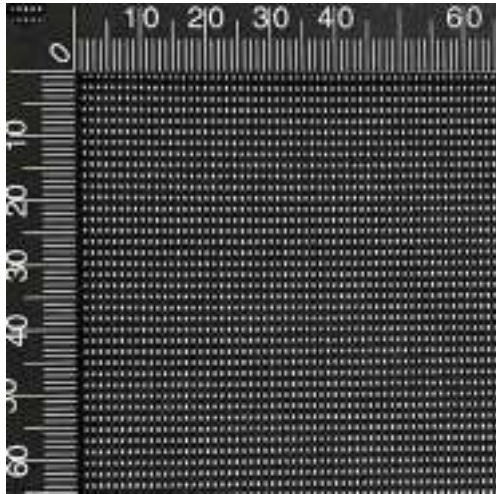


## Feature

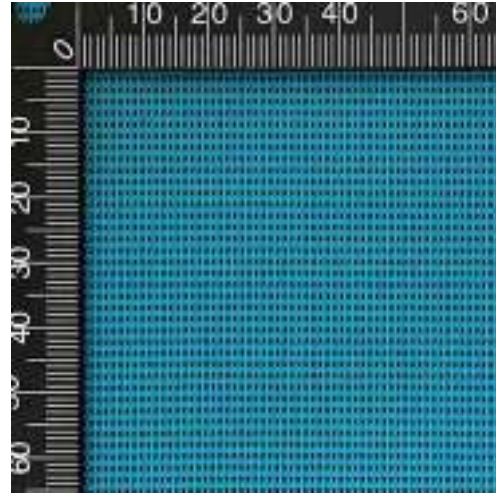
- Solution dye is a one-step process in which dyes, the color is distributed through and locked into the fiber resulting in superior color fastness to chemicals, washing, water and light.
- And the material it produces looks good, with a bright hue that's way more resilient to wear and exposure.

## Target application

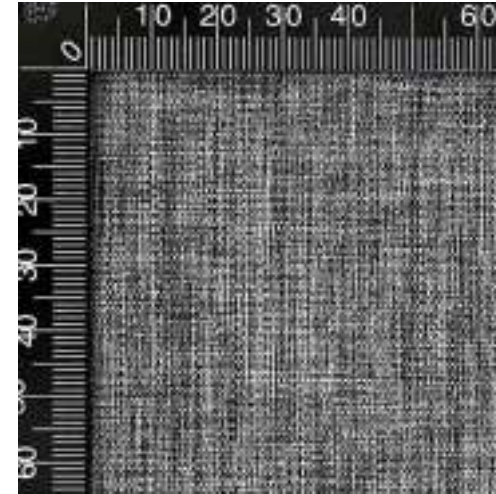
- Daily Bags
- Fashion Bags
- Lifestyle Bags
- Duffel Bags
- Luggage
- Baby Stroller
- Travel Equipment



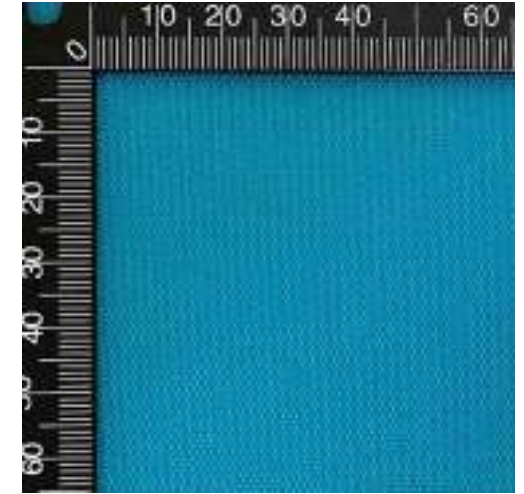
Design No: **P1121-1**  
Content: 100% Polyester  
Description: T450D\*T450D  
Finishing: WR+PU1800mm  
Remark: 07-01



Design No: **P1505**  
Content: 100% Re-Polyester  
Description: T600D\*T600D  
Finishing: C0 WR+PU1000mm  
Remark: NE-09



Design No: **P1509**  
Content: 100% Re-Polyester  
Description: T600D\*T600D  
Finishing: C0 WR+PU\*2  
Remark: NE-09



Design No: **P1501**  
Content: 100% Re-Polyester  
Description: T600D\*T600D  
Finishing: C0 WR+PU1000mm  
Remark: NE-09



# NüSolution™ Light



## Feature

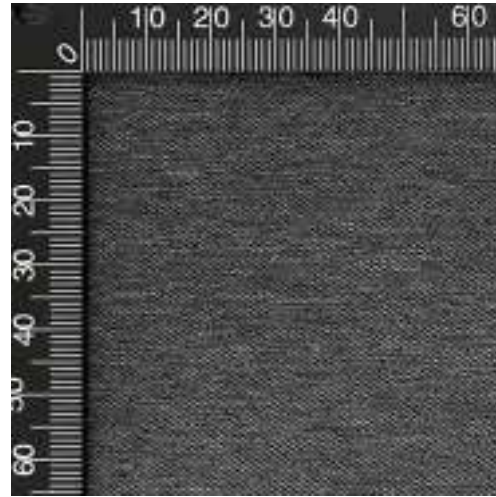
- 100% solution-dyed recycled polyester fabric with a PFC-free DWR coating.
- The weight of fabrics does not exceed 150g/m<sup>2</sup>, light is like water! With excellent colorfastness that allows for years of use, perfect for outdoor and everyday backpack.

## Target application

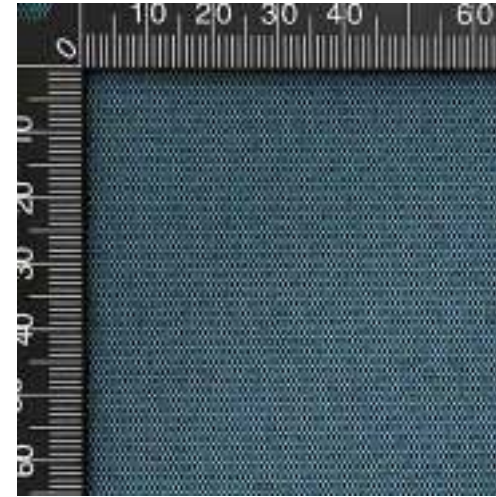
- Daily Bags
- Fashion Bags
- Lifestyle Bags
- Duffel Bags
- Luggage
- Baby Stroller
- Travel Equipment



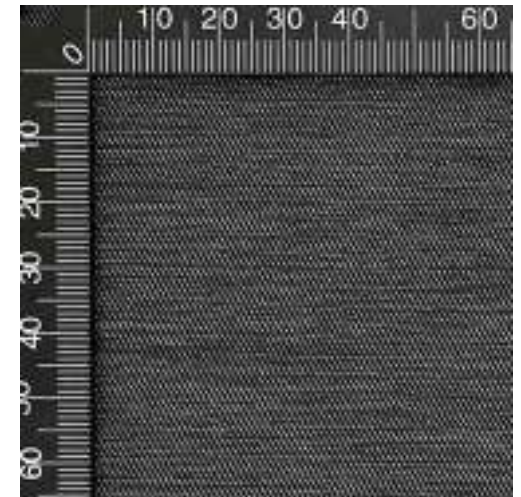
Design No: **P1518**  
Content: 100% Re-Polyester  
Description: T150D\*T150D  
Finishing: C0 WR+PU1500mm  
Remark: NE-10



Design No: **P1514**  
Content: 100% Re-Polyester  
Description: T150D\*T150D  
Finishing: C0 WR+PU1500mm  
Remark: NE-10



Design No: **P1521**  
Content: 100% Re-Polyester  
Description: T150D\*T300D  
Finishing: C0 WR+PU1500mm  
Remark: NE-10



Design No: **P1522**  
Content: 100% Re-Polyester  
Description: T150D\*T300D  
Finishing: C0 WR+PU1500mm  
Remark: NE-10



# NüSolution™ Texture



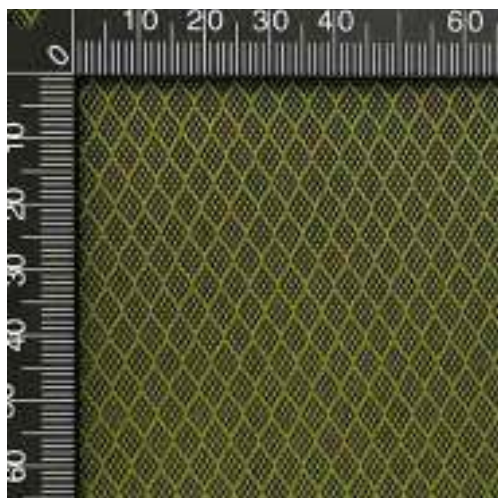
## Feature

- The greener option: high-density recycled polyester fabric with waterless solution-dyed and PFC-free DWR.
- 600D ripstop 6mm fabric with PU coating, provides highly durable with excellent abrasion and tear resistance, ideal for bag.

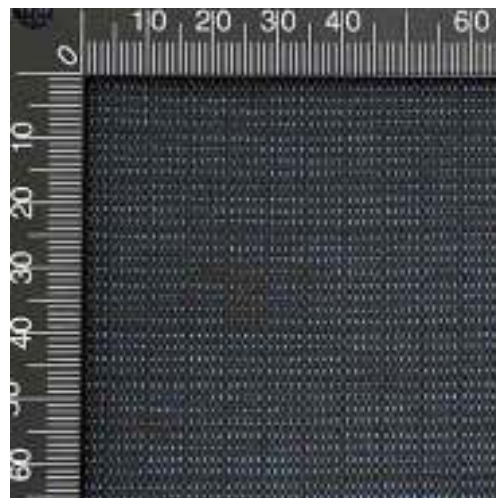
## Target application

- Daily Bags
- Fashion Bags
- Lifestyle Bags
- Duffel Bags
- Luggage
- Baby Stroller
- Travel Equipment

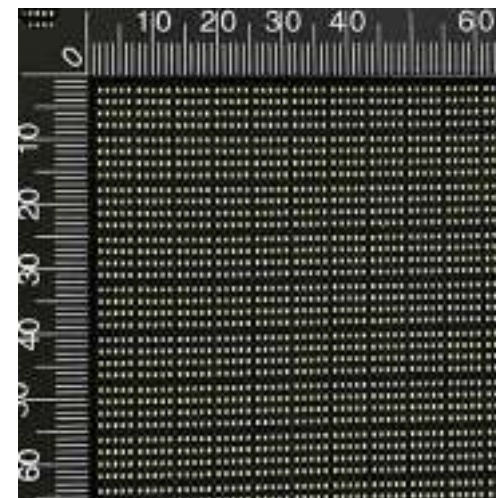




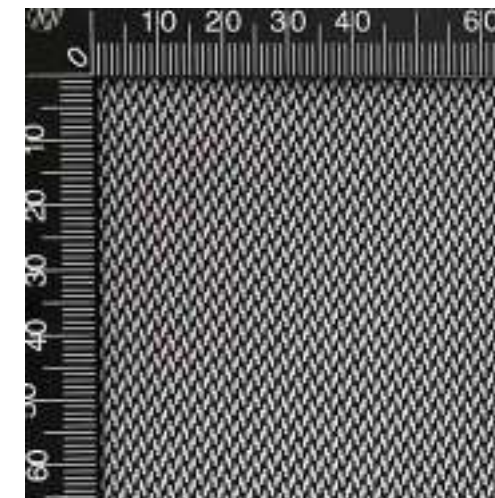
Design No: **P1525**  
Content: 100% Re-Polyester  
Description: T600D\*T600D  
Finishing: CO WR+PU1000mm  
Remark: NE-11



Design No: **P1540**  
Content: 100% Re-Polyester  
Description: T600D\*T600D  
Finishing: CO WR+PU\*2  
Remark: NE-12



Design No: **P1537**  
Content: 100% Re-Polyester  
Description: T600D\*T600D  
Finishing: CO WR+PU900mm  
Remark: NE-12



Design No: **P1530**  
Content: 100% Re-Polyester  
Description: T600D\*T600D  
Finishing: CO WR+PU1000mm  
Remark: NE-11



**Thanks For Your Attention!**

**Looking Forward To Your Feedback !**



<https://fabric.textile-hy.com.tw/>  
[marketing@honmyue.com.tw](mailto:marketing@honmyue.com.tw)



**HONMYUE**  
弘裕企業

**WEAVING A BETTER WORLD. TOGETHER.**